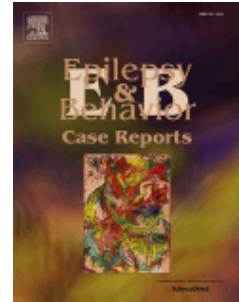




TABLE OF CONTENTS

- **Description** p.1
- **Abstracting and Indexing** p.1
- **Editorial Board** p.1
- **Guide for Authors** p.4



ISSN: 2213-3232

DESCRIPTION

Epilepsy & Behavior Case Reports is a new, online-only, Open Access journal devoted to the rapid publication of case reports on the **behavioral** aspects of **seizures** and **epilepsy**. As a sister journal to *Epilepsy & Behavior*, case reports published in the new journal will benefit from wide exposure and cross-promotion of the two titles.

Epilepsy & Behavior Case Reports presents original peer-reviewed case reports that feature novel observations, significantly add to previously-reported novel observations, or provide compelling illustrations of important clinical principles related to the care of patients who have epilepsy and associated behavioral aspects.

Topics are drawn from a variety of fields, including clinical neurology, neurosurgery, neuropsychiatry, neuropsychology, neurophysiology, neuropharmacology, and neuroimaging.

ABSTRACTING AND INDEXING

PubMed Central

EDITORIAL BOARD

Editor-in-Chief

S.C. Schachter, CIMIT, Harvard University, 165 Cambridge St, Boston, MA 22114, Massachusetts, USA

Associate Editor

D. Schmidt, Epilepsy Research Group, Berlin, Germany

Editorial Board

H. Adeli, Ohio State University, Columbus, Ohio, USA

E. Andermann, Montreal Neurological Hospital and Institute, Québec, Quebec, Canada

F. Andermann, Montreal Neurological Hospital and Institute, Montreal, Quebec, Canada

G. Baker, University of Liverpool (University Hospital Aintree), Liverpool, UK

J. Barry, Stanford University, Stanford, California, USA

R. Bautista, University of Florida, Jacksonville, Florida, USA

S. Baxendale, University College London (UCL), London, UK

S.R. Benbadis, University of South Florida and Tampa General Hospital, Tampa, Florida, USA

R.G. Beran, UNSW Australia, Sydney, New South Wales, Australia

A.T. Berg, Children's Memorial Hospital, Chicago, Illinois, USA
F.M.C. Besag, Bedfordshire & Luton Community NHS Trust, Clapham, Bedford, UK
M. Bialer, Hebrew University of Jerusalem, Jerusalem, Israel
G. Birbeck, Michigan State University, East Lansing, Michigan, USA
K. Blackmon, New York University (NYU) School of Medicine, New York, New York, USA
M. Brodie, Western Infirmary, Glasgow, Scotland, UK
J.G. Burneo, Western University, London, Ontario, Canada
R. Busch, Cleveland Clinic Foundation, Cleveland, Ohio, USA
C.S. Camfield, IWK-Grace Health Centre, Halifax, Nova Scotia, Canada
R. Caplan, UCLA Health System, Los Angeles, California, USA
A.E. Cavanna, University of Birmingham, Birmingham, England, UK
J.E. Cavazos, University of Texas Health Sciences Center at San Antonio, San Antonio, Texas, USA
F. Cendes, Universidade Estadual de Campinas (UNICAMP), Campinas, Brazil
B. Chang, Harvard Medical School, Boston, Massachusetts, USA
F. Drislane, Harvard Medical School, Charlestown, Massachusetts, USA
D.W. Dunn, Indiana University School of Medicine, Indianapolis, Indiana, USA
C.E. Elger, Rheinische Friedrich-Wilhelms-Universität Bonn, Bonn, Germany
A.B. Ettinger, Long Island Jewish Medical Center, New Hyde Park, New York, USA
N. Garcia-Cairasco, Universidade de São Paulo (USP), Sao Paulo, Brazil
B.E. Gidal, University of Wisconsin at Madison, Madison, Wisconsin, USA
F. Gilliam, Washington University Epilepsy Center, Saint Louis, Missouri, USA
M. Hamberger, The Comprehensive Epilepsy Center, New York, New York, USA
S. Haut, Montefiore Medical Center, Bronx, New York, USA
S. Heinrichs, Veterans Affairs (VA) Medical Center, Chestnut Hill, Massachusetts, USA
C.A. Helmstaedter, Rheinische Friedrich-Wilhelms-Universität Bonn, Bonn, Germany
B. Hermann, University of Wisconsin at Madison, Madison, Wisconsin, USA
D.C. Hesdorffer, Columbia University, New York, New York, USA
G. Holmes, Dartmouth Hitchcock Medical Center, Lebanon, New Hampshire, USA
M Hua, National Taiwan University, Taipei, Taiwan
Y. Inoue, Shizuoka Institute of Epilepsy and Neurological Disorders, Shizuoka, Japan
A. Jacoby, University of Liverpool, Liverpool, UK
J. Jones, University of Wisconsin School of Medicine & Public Health (UWSMPH), Madison, Wisconsin, USA
M. Jones-Gotman, McGill University, Montreal, Quebec, Canada
A.M. Kanner, University of Miami, Miller School of Medicine, Miami, Florida, USA
K.R. Kaufman, UMDNJ/Robert Wood Johnson Medical School, New Brunswick, New Jersey, USA
M. Kerr, Cardiff University, Cardiff, Wales, UK
R. Kobau, Centers for Disease Control and Prevention (CDC), Atlanta, Georgia, USA
E.H.W. Kossoff, Johns Hopkins University School of Medicine, Baltimore, Maryland, USA
P. Kwan, Chinese University of Hong Kong, Shatin, Hong Kong
W.C. LaFrance Jr, Brown University, Providence, Rhode Island, USA
S. Lah, University of Sydney, Sydney, New South Wales, Australia
J Lin, University of California at Irvine, Irvine, California, USA
P. Mares, Academy of Sciences of the Czech Republic, PRAHA 4, Czech Republic
R.C. Martin, University of Alabama at Birmingham, Birmingham, Alabama, USA
A. Mazarati, David Geffen School of Medicine at UCLA, Los Angeles, California, USA
K.J. Meador, Stanford University School of Medicine, Stanford, California, USA
M. Mula, St George's Hospital, London, England, UK
M. Neufeld, Tel Aviv University, Tel Aviv, Israel
T. O'Brien, University of Melbourne, Melbourne, Australia
I. Osorio, University of Kansas Medical Center, Kansas City, Kansas, USA
C.P. Panayiotopoulos, St Thomas' Hospital, London, UK
I. Rektor, Masaryk University, Brno, Czech Republic
M. Reuber, University of Sheffield, Sheffield, UK
J. Salpekar, Kennedy Krieger Institute, Baltimore, USA
R. Sankar, University of California at Los Angeles, Los Angeles, California, USA
H. Scharfman, Nathan S. Kline Institute, Orangeburg, New York, USA
B. Schefft, University of Cincinnati, Cincinnati, Ohio, USA
M.R. Schoenberg, University of South Florida, Tampa, Florida, USA
F.A. Scorza, Universidade Federal de São Paulo (UNIFESP), São Paulo, Brazil
R.D. Sheth, Nemours Children's Clinic, Jacksonville, Florida, USA
S. Shorvon, National Hospital for Neurology and Neurosurgery (NHNN), London, UK
J. I. Sirven, MD, Mayo Clinic Arizona, Phoenix, Arizona, USA
C. Stafstrom, University of Wisconsin at Madison, Madison, Wisconsin, USA
R. Surges, University Hospital Bonn, Bonn, Germany
J. Szafarski, University of Alabama at Birmingham, Birmingham, Alabama, USA
D.K. Trenité, Wilhelmina Children's Hospital, UMC, Utrecht, Netherlands
M. Trimble, National Hospital for Neurology and Neurosurgery (NHNN), London, UK

S. Wiebe, University of Calgary, Calgary, Alberta, Canada
S. Wilson, University of Melbourne, Parkville, Australia
A. Zeman, University of Exeter, Exeter, UK

GUIDE FOR AUTHORS

INTRODUCTION

Epilepsy & Behavior Case Reports is a new, online-only, open access journal devoted to the rapid publication of case reports on the behavioral aspects of seizures and epilepsy. As a sister journal to *Epilepsy & Behavior*, case reports published in the new journal will benefit from wide exposure and cross-promotion of the two titles. To provide open access, expenses are offset by a **publication fee of 500 USD** that will allow *Epilepsy & Behavior Case Reports* to support itself in a fully sustainable way.

Epilepsy & Behavior Case Reports presents original peer-reviewed case reports that feature novel observations, significantly add to previously-reported novel observations, or provide compelling illustrations of important clinical principles related to the care of patients who have epilepsy and associated behavioral aspects.

Topics are drawn from a variety of fields, including clinical neurology, neurosurgery, neuropsychiatry, neuropsychology, neurophysiology, neuropharmacology, and neuroimaging.

Types of article

Case reports.

Contact details for submission

Papers should be submitted using the Epilepsy & Behavior Case Reports online submission system, <http://ees.elsevier.com/ebcrl>. For questions on the submission or reviewing process, please contact the Editorial Office prior to submission: EBCR@elsevier.com.

Page charges

This title is fully open access and therefore funded not through library subscription payments but through author fees. If you would like your article to be published open access, but you genuinely cannot afford these fees, then individual waiver requests are considered on a case-by-case basis and may be granted in cases of genuine need. Priority for this waiver programme will be given to applications by authors from countries eligible for the Research4Life programme. See <http://www.research4life.org/institutions.html>

BEFORE YOU BEGIN

Ethics in publishing

For information on Ethics in publishing and Ethical guidelines for journal publication see <http://www.elsevier.com/publishingethics> and <http://www.elsevier.com/journal-authors/ethics>.

Human and animal rights

If the work involves the use of animal or human subjects, the author should ensure that the work described has been carried out in accordance with The Code of Ethics of the World Medical Association (Declaration of Helsinki) for experiments involving humans <http://www.wma.net/en/30publications/10policies/b3/index.html>; EU Directive 2010/63/EU for animal experiments http://ec.europa.eu/environment/chemicals/lab_animals/legislation_en.htm; Uniform Requirements for manuscripts submitted to Biomedical journals <http://www.icmje.org>. Authors should include a statement in the manuscript that informed consent was obtained for experimentation with human subjects. The privacy rights of human subjects must always be observed.

Conflict of interest

All authors are requested to disclose any actual or potential conflict of interest including any financial, personal or other relationships with other people or organizations within three years of beginning the submitted work that could inappropriately influence, or be perceived to influence, their work. See also <http://www.elsevier.com/conflictsofinterest>. Further information and an example of a Conflict of Interest form can be found at: http://help.elsevier.com/app/answers/detail/a_id/286/p/7923.

Submission declaration and verification

Submission of an article implies that the work described has not been published previously (except in the form of an abstract or as part of a published lecture or academic thesis or as an electronic preprint, see <http://www.elsevier.com/postingpolicy>), that it is not under consideration for publication elsewhere, that its publication is approved by all authors and tacitly or explicitly by the responsible authorities where the work was carried out, and that, if accepted, it will not be published elsewhere

in the same form, in English or in any other language, including electronically without the written consent of the copyright-holder. To verify originality, your article may be checked by the originality detection service CrossCheck <http://www.elsevier.com/editors/plagdetect>.

Changes to authorship

This policy concerns the addition, deletion, or rearrangement of author names in the authorship of accepted manuscripts:

Before the accepted manuscript is published in an online issue: Requests to add or remove an author, or to rearrange the author names, must be sent to the Journal Manager from the corresponding author of the accepted manuscript and must include: (a) the reason the name should be added or removed, or the author names rearranged and (b) written confirmation (e-mail, fax, letter) from all authors that they agree with the addition, removal or rearrangement. In the case of addition or removal of authors, this includes confirmation from the author being added or removed. Requests that are not sent by the corresponding author will be forwarded by the Journal Manager to the corresponding author, who must follow the procedure as described above. Note that: (1) Journal Managers will inform the Journal Editors of any such requests and (2) publication of the accepted manuscript in an online issue is suspended until authorship has been agreed.

After the accepted manuscript is published in an online issue: Any requests to add, delete, or rearrange author names in an article published in an online issue will follow the same policies as noted above and result in a corrigendum.

Copyright

Upon acceptance of an article, authors will be asked to complete an 'Exclusive License Agreement' where authors will retain copyright (for more information on this see <http://www.elsevier.com/OAauthoragreement>). Permitted reuse of open access articles is determined by the author's choice of user license (see <http://www.elsevier.com/openaccesslicenses>).

Retained author rights

As an author you (or your employer or institution) retain certain rights, including copyright; for details you are referred to <http://www.elsevier.com/OAauthoragreement>.

Retained author rights

As an author you (or your employer or institution) retain certain rights, including copyright; for details you are referred to: www.elsevier.com/OAauthoragreement

Funding body agreements and policies

Elsevier has established agreements and developed policies to allow authors whose articles appear in journals published by Elsevier, to comply with potential manuscript archiving requirements as specified as conditions of their grant awards. To learn more about existing agreements and policies please visit <http://www.elsevier.com/fundingbodies>.

Open access

This journal is fully open access; all articles will be immediately and permanently free for everyone to read and download upon publication. Permitted (re)use is defined by your choice of one of the following Creative Commons user licenses (see <http://www.elsevier.com/about/open-access/open-access-policies/oa-license-policy>):

Creative Commons Attribution (CC BY): lets others distribute and copy the article, to create extracts, abstracts, and other revised versions, adaptations or derivative works of or from an article (such as a translation), to include in a collective work (such as an anthology), to text or data mine the article, even for commercial purposes, as long as they credit the author(s), do not represent the author as endorsing their adaptation of the article, and do not modify the article in such a way as to damage the author's honor or reputation.

Creative Commons Attribution-NonCommercial-ShareAlike (CC BY-NC-SA): for non-commercial purposes, lets others distribute and copy the article, to create extracts, abstracts and other revised versions, adaptations or derivative works of or from an article (such as a translation), to include in a collective work (such as an anthology), to text and data mine the article, as long as they credit the author(s), do not represent the author as endorsing their adaptation of the article, do not modify the article in such a way as to damage the author's honor or reputation, and license their new adaptations or creations under identical terms (CC BY-NC-SA).

Creative Commons Attribution-NonCommercial-NoDerivs (CC BY-NC-ND): for non-commercial purposes, lets others distribute and copy the article, and to include in a collective work (such as an anthology), as long as they credit the author(s) and provided they do not alter or modify the article.

To provide open access, this journal has an open access fee (also known as: open access publication fee) which needs to be met by the authors or their research funders. The open access fee is all inclusive, Elsevier will not add any additional charges. Depending on local regulations VAT can be charged by local authorities.

The open access publication fee for this journal is **\$500**, excluding taxes. Learn more about Elsevier's pricing policy: <http://www.elsevier.com/openaccesspricing>.

Language (usage and editing services)

Please write your text in good English (American or British usage is accepted, but not a mixture of these). Authors who feel their English language manuscript may require editing to eliminate possible grammatical or spelling errors and to conform to correct scientific English may wish to use the English Language Editing service available from Elsevier's WebShop (<http://webshop.elsevier.com/languageediting/>) or visit our customer support site (<http://support.elsevier.com>) for more information.

Informed consent and patient details

Studies on patients or volunteers require ethics committee approval and informed consent, which should be documented in the paper. Appropriate consents, permissions and releases must be obtained where an author wishes to include case details or other personal information or images of patients and any other individuals in an Elsevier publication. Written consents must be retained by the author and copies of the consents or evidence that such consents have been obtained must be provided to Elsevier on request. For more information, please review the *Elsevier Policy on the Use of Images or Personal Information of Patients or other Individuals*, <http://www.elsevier.com/patient-consent-policy>. Unless you have written permission from the patient (or, where applicable, the next of kin), the personal details of any patient included in any part of the article and in any supplementary materials (including all illustrations and videos) must be removed before submission.

Submission

Our online submission system guides you stepwise through the process of entering your article details and uploading your files. The system converts your article files to a single PDF file used in the peer-review process. Editable files (e.g., Word, LaTeX) are required to typeset your article for final publication. All correspondence, including notification of the Editor's decision and requests for revision, is sent by e-mail.

Referees

Please submit the names and institutional e-mail addresses of several potential referees. For more details, visit our [Support site](#). Note that the editor retains the sole right to decide whether or not the suggested reviewers are used.

PREPARATION

Use of word processing software

It is important that the file be saved in the native format of the word processor used. The text should be in single-column format. Keep the layout of the text as simple as possible. Most formatting codes will be removed and replaced on processing the article. In particular, do not use the word processor's options to justify text or to hyphenate words. However, do use bold face, italics, subscripts, superscripts etc. When preparing tables, if you are using a table grid, use only one grid for each individual table and not a grid for each row. If no grid is used, use tabs, not spaces, to align columns. The electronic text should be prepared in a way very similar to that of conventional manuscripts (see also the Guide to Publishing with Elsevier: <http://www.elsevier.com/guidepublication>). Note that source files of figures, tables and text graphics will be required whether or not you embed your figures in the text. See also the section on Electronic artwork.

To avoid unnecessary errors you are strongly advised to use the 'spell-check' and 'grammar-check' functions of your word processor.

Article structure

Subdivision - numbered sections

Divide your article into clearly defined and numbered sections. Subsections should be numbered 1.1 (then 1.1.1, 1.1.2, ...), 1.2, etc. (the abstract is not included in section numbering). Use this numbering also for internal cross-referencing: do not just refer to 'the text'. Any subsection may be given a brief heading. Each heading should appear on its own separate line.

Introduction

State the objectives of the work and provide an adequate background, avoiding a detailed literature survey or a summary of the results.

Material and methods

Provide sufficient detail to allow the work to be reproduced. Methods already published should be indicated by a reference: only relevant modifications should be described.

Results

Results should be clear and concise.

Discussion

This should explore the significance of the results of the work, not repeat them. A combined Results and Discussion section is often appropriate. Avoid extensive citations and discussion of published literature.

Conclusions

The main conclusions of the study may be presented in a short Conclusions section, which may stand alone or form a subsection of a Discussion or Results and Discussion section.

Appendices

If there is more than one appendix, they should be identified as A, B, etc. Formulae and equations in appendices should be given separate numbering: Eq. (A.1), Eq. (A.2), etc.; in a subsequent appendix, Eq. (B.1) and so on. Similarly for tables and figures: Table A.1; Fig. A.1, etc.

Essential title page information

- **Title.** Concise and informative. Titles are often used in information-retrieval systems. Avoid abbreviations and formulae where possible.
- **Author names and affiliations.** Where the family name may be ambiguous (e.g., a double name), please indicate this clearly. Present the authors' affiliation addresses (where the actual work was done) below the names. Indicate all affiliations with a lower-case superscript letter immediately after the author's name and in front of the appropriate address. Provide the full postal address of each affiliation, including the country name and, if available, the e-mail address of each author.
- **Corresponding author.** Clearly indicate who will handle correspondence at all stages of refereeing and publication, also post-publication. **Ensure that phone numbers (with country and area code) are provided in addition to the e-mail address and the complete postal address. Contact details must be kept up to date by the corresponding author.**
- **Present/permanent address.** If an author has moved since the work described in the article was done, or was visiting at the time, a 'Present address' (or 'Permanent address') may be indicated as a footnote to that author's name. The address at which the author actually did the work must be retained as the main, affiliation address. Superscript Arabic numerals are used for such footnotes.

Abstract

A concise and factual abstract is required. The abstract should state briefly the purpose of the research, the principal results and major conclusions. An abstract is often presented separately from the article, so it must be able to stand alone. For this reason, References should be avoided, but if essential, then cite the author(s) and year(s). Also, non-standard or uncommon abbreviations should be avoided, but if essential they must be defined at their first mention in the abstract itself.

Graphical abstract

Although a graphical abstract is optional, its use is encouraged as it draws more attention to the online article. The graphical abstract should summarize the contents of the article in a concise, pictorial form designed to capture the attention of a wide readership. Graphical abstracts should be submitted as a separate file in the online submission system. Image size: Please provide an image with a minimum of 531 × 1328 pixels (h × w) or proportionally more. The image should be readable at a size of 5 × 13 cm using a regular screen resolution of 96 dpi. Preferred file types: TIFF, EPS, PDF or MS Office files. See <http://www.elsevier.com/graphicalabstracts> for examples.

Authors can make use of Elsevier's Illustration and Enhancement service to ensure the best presentation of their images and in accordance with all technical requirements: [Illustration Service](#).

Highlights

Highlights are a short collection of bullet points that convey the core findings of the article. Highlights are optional and should be submitted in a separate editable file in the online submission system. Please use 'Highlights' in the file name and include 3 to 5 bullet points (maximum 85 characters, including spaces, per bullet point). See <http://www.elsevier.com/highlights> for examples.

Keywords

Immediately after the abstract, provide a maximum of 6 keywords, using American spelling and avoiding general and plural terms and multiple concepts (avoid, for example, 'and', 'of'). Be sparing with abbreviations: only abbreviations firmly established in the field may be eligible. These keywords will be used for indexing purposes.

Abbreviations

Define abbreviations that are not standard in this field in a footnote to be placed on the first page of the article. Such abbreviations that are unavoidable in the abstract must be defined at their first mention there, as well as in the footnote. Ensure consistency of abbreviations throughout the article.

Acknowledgements

Collate acknowledgements in a separate section at the end of the article before the references and do not, therefore, include them on the title page, as a footnote to the title or otherwise. List here those individuals who provided help during the research (e.g., providing language help, writing assistance or proof reading the article, etc.).

Database linking

Elsevier encourages authors to connect articles with external databases, giving their readers one-click access to relevant databases that help to build a better understanding of the described research. Please refer to relevant database identifiers using the following format in your article: Database: xxxx (e.g., TAIR: AT1G01020; CCDC: 734053; PDB: 1XFN). See <http://www.elsevier.com/databaselinking> for more information and a full list of supported databases.

Math formulae

Please submit math equations as editable text and not as images. Present simple formulae in line with normal text where possible and use the solidus (/) instead of a horizontal line for small fractional terms, e.g., X/Y. In principle, variables are to be presented in italics. Powers of e are often more conveniently denoted by exp. Number consecutively any equations that have to be displayed separately from the text (if referred to explicitly in the text).

Footnotes

Footnotes should be used sparingly. Number them consecutively throughout the article. Many word processors can build footnotes into the text, and this feature may be used. Otherwise, please indicate the position of footnotes in the text and list the footnotes themselves separately at the end of the article. Do not include footnotes in the Reference list.

Artwork

Electronic artwork

General points

- Make sure you use uniform lettering and sizing of your original artwork.
- Save text in illustrations as 'graphics' or enclose the font.
- Only use the following fonts in your illustrations: Arial, Courier, Times, Symbol.
- Number the illustrations according to their sequence in the text.
- Use a logical naming convention for your artwork files.
- Provide captions to illustrations separately.
- Submit each figure as a separate file.

A detailed guide on electronic artwork is available on our website:

<http://www.elsevier.com/artworkinstructions>

You are urged to visit this site; some excerpts from the detailed information are given here.

Formats

Regardless of the application used, when your electronic artwork is finalised, please 'save as' or convert the images to one of the following formats (note the resolution requirements for line drawings, halftones, and line/halftone combinations given below):

EPS: Vector drawings. Embed the font or save the text as 'graphics'.

TIFF: Color or grayscale photographs (halftones): always use a minimum of 300 dpi.

TIFF: Bitmapped line drawings: use a minimum of 1000 dpi.

TIFF: Combinations bitmapped line/half-tone (color or grayscale): a minimum of 500 dpi is required. If your electronic artwork is created in a Microsoft Office application (Word, PowerPoint, Excel) then please supply 'as is'.

Please do not:

- Supply files that are optimised for screen use (e.g., GIF, BMP, PICT, WPG); the resolution is too low;
- Supply files that are too low in resolution;
- Submit graphics that are disproportionately large for the content.

Color artwork

Please make sure that artwork files are in an acceptable format (TIFF, EPS or MS Office files) and with the correct resolution. If, together with your accepted article, you submit usable color figures then Elsevier will ensure, at no additional charge, that these figures will appear in color on the Web (e.g., ScienceDirect and other sites). For further information on the preparation of electronic artwork, please see <http://www.elsevier.com/artworkinstructions>.

Figure captions

Ensure that each illustration has a caption. Supply captions separately, not attached to the figure. A caption should comprise a brief title (**not** on the figure itself) and a description of the illustration. Keep text in the illustrations themselves to a minimum but explain all symbols and abbreviations used.

Tables

Please submit tables as editable text and not as images. Tables can be placed either next to the relevant text in the article, or on separate page(s) at the end. Number tables consecutively in accordance with their appearance in the text and place any table notes below the table body. Be sparing in the use of tables and ensure that the data presented in them do not duplicate results described elsewhere in the article. Please avoid using vertical rules.

References

Citation in text

Please ensure that every reference cited in the text is also present in the reference list (and vice versa). Any references cited in the abstract must be given in full. Unpublished results and personal communications are not recommended in the reference list, but may be mentioned in the text. If these references are included in the reference list they should follow the standard reference style of the journal and should include a substitution of the publication date with either 'Unpublished results' or 'Personal communication'. Citation of a reference as 'in press' implies that the item has been accepted for publication.

Web references

As a minimum, the full URL should be given and the date when the reference was last accessed. Any further information, if known (DOI, author names, dates, reference to a source publication, etc.), should also be given. Web references can be listed separately (e.g., after the reference list) under a different heading if desired, or can be included in the reference list.

References in a special issue

Please ensure that the words 'this issue' are added to any references in the list (and any citations in the text) to other articles in the same Special Issue.

Reference style

References should be cited in the text by numbers in brackets, in order of appearance and follow the Vancouver Style (<http://www.library.uwa.edu.au/guides/citingsources/vancouver.html>). Only articles that have been published or are in press should be included in the references. Authors are responsible for the accuracy of references. Unpublished results or personal communications should be cited as such in the text. Please note the following examples:

[1] Hermann BP, Seidenberg M, Bell B, Woodard A, Rutecki P, Sheth R. Comorbid psychiatric symptoms in temporal lobe epilepsy: association with chronicity of epilepsy and impact on quality of life. *Epilepsy Behav* 2000;1:184-90.

[2] Paxinos G, Ashwell KWS, Tork I. Atlas of the developing rat nervous system. 2nd ed. San Diego: Academic Press; 1994.

[3] Shafer PO, Salmanson E. Psychosocial aspects of epilepsy. In: Schachter SC, Schomer DL, editors. The comprehensive evaluation and treatment of epilepsy: a practical guide. San Diego: Academic Press; 1997. p. 91-109.

Reference style

Text: Indicate references by number(s) in square brackets in line with the text. The actual authors can be referred to, but the reference number(s) must always be given.

List: Number the references (numbers in square brackets) in the list in the order in which they appear in the text.

Examples:

Reference to a journal publication:

[1] Van der Geer J, Hanraads JA, Lupton RA. The art of writing a scientific article. J Sci Commun 2010;163:51-9.

Reference to a book:

[2] Strunk Jr W, White EB. The elements of style. 4th ed. New York: Longman; 2000.

Reference to a chapter in an edited book:

[3] Mettam GR, Adams LB. How to prepare an electronic version of your article. In: Jones BS, Smith RZ, editors. Introduction to the electronic age, New York: E-Publishing Inc; 2009, p. 281-304.

Note shortened form for last page number. e.g., 51-9, and that for more than 6 authors the first 6 should be listed followed by 'et al.' For further details you are referred to 'Uniform Requirements for Manuscripts submitted to Biomedical Journals' (J Am Med Assoc 1997;277:927-34) (see also http://www.nlm.nih.gov/bsd/uniform_requirements.html).

Journal abbreviations source

Journal names should be abbreviated according to the List of Title Word Abbreviations: <http://www.issn.org/services/online-services/access-to-the-ltwa/>.

Video data

Elsevier accepts video material and animation sequences to support and enhance your scientific research. Authors who have video or animation files that they wish to submit with their article are strongly encouraged to include these within the body of the article. This can be done in the same way as a figure or table by referring to the video or animation content and noting in the body text where it should be placed. All submitted files should be properly labeled so that they directly relate to the video file's content. In order to ensure that your video or animation material is directly usable, please provide the files in one of our recommended file formats with a preferred maximum size of 50 MB. Video and animation files supplied will be published online in the electronic version of your article in Elsevier Web products, including ScienceDirect: <http://www.sciencedirect.com>. Please supply 'stills' with your files: you can choose any frame from the video or animation or make a separate image. These will be used instead of standard icons and will personalize the link to your video data. For more detailed instructions please visit our video instruction pages at <http://www.elsevier.com/artworkinstructions>.

AudioSlides

The journal encourages authors to create an AudioSlides presentation with their published article. AudioSlides are brief, webinar-style presentations that are shown next to the online article on ScienceDirect. This gives authors the opportunity to summarize their research in their own words and to help readers understand what the paper is about. More information and examples are available at <http://www.elsevier.com/audioslides>. Authors of this journal will automatically receive an invitation e-mail to create an AudioSlides presentation after acceptance of their paper.

Supplementary data

Elsevier accepts electronic supplementary material to support and enhance your scientific research. Supplementary files offer the author additional possibilities to publish supporting applications, high-resolution images, background datasets, sound clips and more. Supplementary files supplied will be published online alongside the electronic version of your article in Elsevier Web products, including ScienceDirect: <http://www.sciencedirect.com>. In order to ensure that your submitted material is directly usable, please provide the data in one of our recommended file formats. Authors should submit the material in electronic format together with the article and supply a concise and descriptive caption for each file. For more detailed instructions please visit our artwork instruction pages at <http://www.elsevier.com/artworkinstructions>.

3D neuroimaging

You can enrich your online articles by providing 3D neuroimaging data in NIfTI format. This will be visualized for readers using the interactive viewer embedded within your article, and will enable them to: browse through available neuroimaging datasets; zoom, rotate and pan the 3D brain reconstruction; cut through the volume; change opacity and color mapping; switch between 3D and 2D projected views; and download the data. The viewer supports both single (.nii) and dual (.hdr and .img) NIfTI file formats. Recommended size of a single uncompressed dataset is 100 MB or less. Multiple datasets can be submitted. Each dataset will have to be zipped and uploaded to the online submission system via the '3D neuroimaging data' submission category. Please provide a short informative description for each dataset by filling in the 'Description' field when uploading a dataset. Note: all datasets will be available for downloading from the online article on ScienceDirect. If you have concerns about your data being downloadable, please provide a video instead. For more information see: <http://www.elsevier.com/3DNeuroimaging>.

Submission checklist

The following list will be useful during the final checking of an article prior to sending it to the journal for review. Please consult this Guide for Authors for further details of any item.

Ensure that the following items are present:

One author has been designated as the corresponding author with contact details:

- E-mail address
- Full postal address
- Telephone and fax numbers

All necessary files have been uploaded, and contain:

- Keywords
- All figure captions
- All tables (including title, description, footnotes)

Further considerations

- Manuscript has been 'spell-checked' and 'grammar-checked'
- References are in the correct format for this journal
- All references mentioned in the Reference list are cited in the text, and vice versa
- Permission has been obtained for use of copyrighted material from other sources (including the Web)
- Color figures are clearly marked as being intended for color reproduction on the Web (free of charge)

For any further information please visit our customer support site at <http://support.elsevier.com>.

AFTER ACCEPTANCE

Use of the Digital Object Identifier

The Digital Object Identifier (DOI) may be used to cite and link to electronic documents. The DOI consists of a unique alpha-numeric character string which is assigned to a document by the publisher upon the initial electronic publication. The assigned DOI never changes. Therefore, it is an ideal medium for citing a document, particularly 'Articles in press' because they have not yet received their full bibliographic information. Example of a correctly given DOI (in URL format; here an article in the journal *Physics Letters B*):

<http://dx.doi.org/10.1016/j.physletb.2010.09.059>

When you use a DOI to create links to documents on the web, the DOIs are guaranteed never to change.

Online proof correction

Corresponding authors will receive an e-mail with a link to our online proofing system, allowing annotation and correction of proofs online. The environment is similar to MS Word: in addition to editing text, you can also comment on figures/tables and answer questions from the Copy Editor. Web-based proofing provides a faster and less error-prone process by allowing you to directly type your corrections, eliminating the potential introduction of errors.

If preferred, you can still choose to annotate and upload your edits on the PDF version. All instructions for proofing will be given in the e-mail we send to authors, including alternative methods to the online version and PDF.

We will do everything possible to get your article published quickly and accurately. Please use this proof only for checking the typesetting, editing, completeness and correctness of the text, tables and figures. Significant changes to the article as accepted for publication will only be considered at this stage with permission from the Editor. It is important to ensure that all corrections are sent back to us in one communication. Please check carefully before replying, as inclusion of any subsequent corrections cannot be guaranteed. Proofreading is solely your responsibility.

Offprints

The corresponding author, at no cost, will be provided with a personalized link providing 50 days free access to the final published version of the article on [ScienceDirect](#). This link can also be used for sharing via email and social networks. For an extra charge, paper offprints can be ordered via the offprint order form which is sent once the article is accepted for publication. Both corresponding and co-authors may order offprints at any time via Elsevier's WebShop (<http://webshop.elsevier.com/myarticleservices/offprints>). Authors requiring printed copies of multiple articles may use Elsevier WebShop's 'Create Your Own Book' service to collate multiple articles within a single cover (<http://webshop.elsevier.com/myarticleservices/booklets>).

AUTHOR INQUIRIES

You can track your submitted article at http://help.elsevier.com/app/answers/detail/a_id/89/p/8045/. You can track your accepted article at <http://www.elsevier.com/trackarticle>. You are also welcome to contact Customer Support via <http://support.elsevier.com>.

© Copyright 2014 Elsevier | <http://www.elsevier.com>