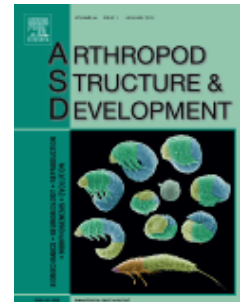




### TABLE OF CONTENTS

---

●	<b>Description</b>	<b>p.1</b>
●	<b>Audience</b>	<b>p.1</b>
●	<b>Impact Factor</b>	<b>p.1</b>
●	<b>Abstracting and Indexing</b>	<b>p.2</b>
●	<b>Editorial Board</b>	<b>p.2</b>
●	<b>Guide for Authors</b>	<b>p.4</b>



ISSN: 1467-8039

### DESCRIPTION

---

*Arthropod Structure & Development* is a Journal of **Arthropod Structural Biology, Development, and Functional Morphology**; it considers manuscripts that deal with micro- and **neuroanatomy**, development, **biomechanics, organogenesis** in particular under comparative and evolutionary aspects but not merely taxonomic papers. The aim of the journal is to publish papers in the areas of functional and comparative anatomy and development, with an emphasis on the role of **cellular organization** in **organ function**. The journal will also publish papers on organogenesis, embryonic and postembryonic development, and organ or **tissue regeneration** and **repair**. Manuscripts dealing with comparative and evolutionary aspects of microanatomy and development are encouraged. Specifically, the following research areas will be covered:

- Integument and effector organs (exoskeleton, muscles and glands).
- Sensory structures, peripheral, autonomic and central nervous systems, and neuroendocrine systems.
- Circulatory, respiratory, visceral, and excretory organs.
- Reproductive systems, organogenesis and repair.
- Pattern formation and development.
- Comparative microanatomy and morphology of arthropods from the phylogenetic view.

A thorough but efficient peer-review system with the assistance of section and advisory **editors** of world-wide reputation will ensure that published papers will conform to high scientific standards. Review articles and article series on relevant topics will be invited at regular intervals and will be subject to peer-review. Particular emphasis will be given to high quality line and half-tone illustrations. Exceptional colour plates will be printed free of charge. Supplementary 3-D and motion figures and other electronic addenda can be submitted with the manuscript and published on the journal's website after acceptance.

### AUDIENCE

---

Insect scientists, invertebrate morphologists, zoologists, neurobiologists, cell biologists, molecular biologists and developmental biologists.

### IMPACT FACTOR

---

2013: 1.826 © Thomson Reuters Journal Citation Reports 2014

## ABSTRACTING AND INDEXING

---

BIOSIS  
Elsevier BIOBASE  
Cambridge Scientific Abstracts  
Current Contents  
EMBASE  
Scopus  
EMBiology

## EDITORIAL BOARD

---

### **Co-ordinating Editors:**

**R.A. Steinbrecht**, Dept. of Ecology and Evolutionary Biology, Max Planck Institute (MPI) for Ornithology, Eberhard-Gwinner-Str, 82319, Seewiesen, Germany

**N.J. Strausfeld**, Div. of Neurobiology, Arizona Research Laboratories, 611 Gould-Simpson Building, Tucson, AZ 85721, Arizona, USA

### **Section Editors:**

#### **1. Integument and effector organs (exoskeleton, muscles and glands)**

**J. Billen**, Zoological Inst., KU Leuven, Naamsestraat 59, 3000, Leuven, Belgium

**S.N. Gorb**, Inst. für Zoologie, Christian-Albrechts-Universität zu Kiel (CAU), Olshausenstraße 40, 24098, Kiel, Germany

#### **2. Sensory structures, peripheral, autonomic and central nervous systems, including neuroendocrine systems**

**S. Fahrbach**, Dept. of Biology, Wake Forest University, Reynolda Station, Box 7325, Winston-Salem, NC 27109, North Carolina, USA

**W. Rössler**, Biozentrum (Theodor-Boveri-Inst.), Behavioral Physiology and Sociobiology, Julius-Maximilians-Universität Würzburg, Am Hubland, 97074, Würzburg, Germany

#### **3. Circulatory, respiratory, visceral and excretory organs**

**K. Greenlee**, Dept. of Biological Sciences, North Dakota State University, 1340 Administration Ave., Fargo, ND 58102, North Dakota, USA

**C. Wirkner**, Zoologisches Institut, Universität Rostock, Universitätsplatz 2, D-18051, Rostock, Germany

#### **4. Reproductive systems, organogenesis and repair**

**S. Bilinski**, Inst. of Zoology, Jagiellonian University Krakow, PL-30-060, Krakow, Poland

**M. Grbic**, Max Planck Institut (MPI) für Entwicklungsbiologie, Spemannstrasse 35, 72076, Tübingen, Germany

#### **5. Pattern formation and development**

**V. Hartenstein**, Dept. of Molecular, Cell and Developmental Biology, UCLA Health System, 621 Charles Young Drive East, Los Angeles, CA 90095, California, USA

**G. Scholtz**, Inst. für Biologie, Vergleichende Zoologie, Dept. of Animal Physiology, Humboldt-Universität Berlin, Philippstr. 13, 10115, Berlin, Germany

#### **6. Comparative microanatomy and morphology of arthropods from the phylogenetic view**

**B.S. Beltz**, Dept. of Biological Science, Wellesley College, Wellesley, MA 02421, Massachusetts, USA

**G.D. Edgecombe**, Dept. of Palaeontology, Natural History Museum, Cromwell Road, London, SW7 5BD, UK

### **Advisory Board:**

**R. Beutel**, Institute of Systematic Zoology and Evolutions, Friedrich Schiller University of Jena, Erbertstr. 1, 07743, Jena, Germany

**C. Consoulas**, Medical School, Lab. of Experimental Physiology, University of Athens, M. Asias 75, 11527, Athens, Greece

**A. Daley**, Dept. of Zoology, University of Oxford, South Parks Road, Oxford, OX1 3PS, UK

**R. Dallai**, Dept. of Evolutionary Biology, Università degli Studi di Siena, via Aldo Moro, 2, 53100, Siena, Italy

**C. Derby**, Dept. of Biology, Georgia State University, P.O. Box 4010, Atlanta, GA 30302-4010, Georgia, USA

**S.A. Filimonova**, Zoological Institute, Russian Academy of Sciences, Universitetskaya embankment, 1, 199034, St. Petersburg, Russian Federation

**R. Foelix**

**L. Frantsevich**, Inst. of Zoology, I.I. Schmalhausen, 15 Bogdam Khmelnytskyi, 01601, Kyiv, Ukraine

**W. Gronenberg**, ARL Div. of Neurobiology, University of Arizona, 611 Gould-Simpson Building, Tucson, AZ 85721, Arizona, USA

**S. Harzsch**, Zoologisches Institut und Museum, Cytologie und Evolutionsbiologie, Ernst-Moritz-Arnd Universität Greifswald, Soldmannstrasse 23, D - 17487, Greifswald, Germany

**B.S. Heming**

**U. Homberg**, Fakultät Biologie-Zoologie, Philipps-Universität Marburg, Biegenstr. 10 Frisch-Strasse, 35032, Marburg, Germany

**K. Ito**, Inst. of Molecular and Cellular Biosciences, University of Tokyo, 1-1-1 Yayoi, Bunkyo-ku, 113-0032, Tokyo, Japan

**T.A. Keil**, Max Planck Institut (MPI) für Biochemie, Am Klopferspitz 18A, 82152, Martinsried, Germany

**R. Machida**, Sugadaira Montane Research Center, University of Tsukuba, Sugadaira Kogen, Ueda, 386-2204, Nagano, Japan

**D. Merritt**, Dept. of Zoology & Entomology, University of Queensland, St. Lucia, QLD 4072, Queensland, Australia

**D.R. Nässel**, Dept. of Zoology, Stockholms Universitet, S-106-91, Stockholm, Sweden

**G. Pass**, Inst. für Zoologie, University of Vienna, Althanstraße 14, 1090, Wien, Austria

**M. Rebola**, Dipartimento di Chimica, Biologia e Biotechnologie, Università degli Studi di Perugia, 06123, Perugia, Italy

**C. Rind**, School of Biology, Newcastle University, Ridley Bdg., Newcastle, NE1 7RU, UK

**M. Rost-Roszkowska**, University of Silesia, Bankowa 9, 40-007, Katowice, Poland

**J.W. Shultz**, Department of Entomology, University of Maryland, 4112 Plant Sciences Bldg, College Park, 20742-4454, Maryland, USA

**A. Stollewerk**, School of Biological Sciences, Queen Mary, University of London (QMUL), 327 Mile End Road, London, E1 4NS, UK

## GUIDE FOR AUTHORS

---

### INTRODUCTION

#### *Types of paper*

#### **Types of Contributions**

The journal publishes regular research papers, review articles and series articles for special or thematic issues. Short, timely reports may be submitted as short communications (manuscript should not exceed 5 manuscript pages and 2 plates). Reviews should address tightly defined topics, which are of particular interest to the readership of the Journal. They should provide a critical and balanced view of the field. Special issues contain a series of original papers and/or reviews in a particular area, organized by an expert in that area. Proposals for special issues or reviews should be discussed with the Coordinating Editors beforehand.

#### *Contact details for submission*

#### **Submission of Papers**

Authors are requested to use electronic submission via: <http://www.ees.elsevier.com/asd>. For exceptions contact one of the Coordinating Editors:

R. Alexander Steinbrecht  
Max-Planck-Institut für Ornithologie  
D-82319 Seewiesen  
Germany  
Tel: +449 8157 932 229  
Fax: +49 8157 932 434  
E-mail: [asd@orn.mpg.de](mailto:asd@orn.mpg.de)

Nicholas J Strausfeld  
ARL Division of Neurobiology  
University of Arizona  
611 Gould-Simpson Building  
Tucson, Arizona 85721  
United States of America  
Tel: +1 520 6218382  
Fax: +1 520 621 8282  
E-mail: [flybrain@neurobio.arizona.edu](mailto:flybrain@neurobio.arizona.edu)

### **BEFORE YOU BEGIN**

#### ***Ethics in publishing***

For information on Ethics in publishing and Ethical guidelines for journal publication see <http://www.elsevier.com/publishingethics> and <http://www.elsevier.com/journal-authors/ethics>.

#### ***Conflict of interest***

All authors are requested to disclose any actual or potential conflict of interest including any financial, personal or other relationships with other people or organizations within three years of beginning the submitted work that could inappropriately influence, or be perceived to influence, their work. See also <http://www.elsevier.com/conflictsofinterest>. Further information and an example of a Conflict of Interest form can be found at: [http://help.elsevier.com/app/answers/detail/a\\_id/286/p/7923](http://help.elsevier.com/app/answers/detail/a_id/286/p/7923).

#### ***Submission declaration and verification***

Submission of an article implies that the work described has not been published previously (except in the form of an abstract or as part of a published lecture or academic thesis or as an electronic preprint, see <http://www.elsevier.com/postingpolicy>), that it is not under consideration for publication elsewhere, that its publication is approved by all authors and tacitly or explicitly by the responsible authorities where the work was carried out, and that, if accepted, it will not be published elsewhere in the same form, in English or in any other language, including electronically without the written consent of the copyright-holder. To verify originality, your article may be checked by the originality detection service CrossCheck <http://www.elsevier.com/editors/plagdetect>.

### **Changes to authorship**

This policy concerns the addition, deletion, or rearrangement of author names in the authorship of accepted manuscripts:

*Before the accepted manuscript is published in an online issue:* Requests to add or remove an author, or to rearrange the author names, must be sent to the Journal Manager from the corresponding author of the accepted manuscript and must include: (a) the reason the name should be added or removed, or the author names rearranged and (b) written confirmation (e-mail, fax, letter) from all authors that they agree with the addition, removal or rearrangement. In the case of addition or removal of authors, this includes confirmation from the author being added or removed. Requests that are not sent by the corresponding author will be forwarded by the Journal Manager to the corresponding author, who must follow the procedure as described above. Note that: (1) Journal Managers will inform the Journal Editors of any such requests and (2) publication of the accepted manuscript in an online issue is suspended until authorship has been agreed.

*After the accepted manuscript is published in an online issue:* Any requests to add, delete, or rearrange author names in an article published in an online issue will follow the same policies as noted above and result in a corrigendum.

### **Copyright**

This journal offers authors a choice in publishing their research: Open access and Subscription.

#### *For subscription articles*

Upon acceptance of an article, authors will be asked to complete a 'Journal Publishing Agreement' (for more information on this and copyright, see <http://www.elsevier.com/copyright>). An e-mail will be sent to the corresponding author confirming receipt of the manuscript together with a 'Journal Publishing Agreement' form or a link to the online version of this agreement.

Subscribers may reproduce tables of contents or prepare lists of articles including abstracts for internal circulation within their institutions. Permission of the Publisher is required for resale or distribution outside the institution and for all other derivative works, including compilations and translations (please consult <http://www.elsevier.com/permissions>). If excerpts from other copyrighted works are included, the author(s) must obtain written permission from the copyright owners and credit the source(s) in the article. Elsevier has preprinted forms for use by authors in these cases: please consult <http://www.elsevier.com/permissions>.

#### *For open access articles*

Upon acceptance of an article, authors will be asked to complete an 'Exclusive License Agreement' (for more information see <http://www.elsevier.com/OAauthoragreement>). Permitted reuse of open access articles is determined by the author's choice of user license (see <http://www.elsevier.com/openaccesslicenses>).

### **Retained author rights**

As an author you (or your employer or institution) retain certain rights. For more information on author rights for:

Subscription articles please see <http://www.elsevier.com/journal-authors/author-rights-and-responsibilities>.

Open access articles please see <http://www.elsevier.com/OAauthoragreement>.

### **Role of the funding source**

You are requested to identify who provided financial support for the conduct of the research and/or preparation of the article and to briefly describe the role of the sponsor(s), if any, in study design; in the collection, analysis and interpretation of data; in the writing of the report; and in the decision to submit the article for publication. If the funding source(s) had no such involvement then this should be stated.

### **Funding body agreements and policies**

Elsevier has established agreements and developed policies to allow authors whose articles appear in journals published by Elsevier, to comply with potential manuscript archiving requirements as specified as conditions of their grant awards. To learn more about existing agreements and policies please visit <http://www.elsevier.com/fundingbodies>.

### **Open access**

This journal offers authors a choice in publishing their research:

## Open access

- Articles are freely available to both subscribers and the wider public with permitted reuse
- An open access publication fee is payable by authors or their research funder

## Subscription

- Articles are made available to subscribers as well as developing countries and patient groups through our access programs (<http://www.elsevier.com/access>)
- No open access publication fee

All articles published open access will be immediately and permanently free for everyone to read and download. Permitted reuse is defined by your choice of one of the following Creative Commons user licenses:

**Creative Commons Attribution (CC BY):** lets others distribute and copy the article, to create extracts, abstracts, and other revised versions, adaptations or derivative works of or from an article (such as a translation), to include in a collective work (such as an anthology), to text or data mine the article, even for commercial purposes, as long as they credit the author(s), do not represent the author as endorsing their adaptation of the article, and do not modify the article in such a way as to damage the author's honor or reputation.

**Creative Commons Attribution-NonCommercial-ShareAlike (CC BY-NC-SA):** for non-commercial purposes, lets others distribute and copy the article, to create extracts, abstracts and other revised versions, adaptations or derivative works of or from an article (such as a translation), to include in a collective work (such as an anthology), to text and data mine the article, as long as they credit the author(s), do not represent the author as endorsing their adaptation of the article, do not modify the article in such a way as to damage the author's honor or reputation, and license their new adaptations or creations under identical terms (CC BY-NC-SA).

**Creative Commons Attribution-NonCommercial-NoDerivs (CC BY-NC-ND):** for non-commercial purposes, lets others distribute and copy the article, and to include in a collective work (such as an anthology), as long as they credit the author(s) and provided they do not alter or modify the article.

To provide open access, this journal has a publication fee which needs to be met by the authors or their research funders for each article published open access.

Your publication choice will have no effect on the peer review process or acceptance of submitted articles.

The open access publication fee for this journal is **\$3000**, excluding taxes. Learn more about Elsevier's pricing policy: <http://www.elsevier.com/openaccesspricing>.

## Language (usage and editing services)

Please write your text in good English (American or British usage is accepted, but not a mixture of these). Authors who feel their English language manuscript may require editing to eliminate possible grammatical or spelling errors and to conform to correct scientific English may wish to use the English Language Editing service available from Elsevier's WebShop (<http://webshop.elsevier.com/languageediting/>) or visit our customer support site (<http://support.elsevier.com>) for more information.

## Submission

Our online submission system guides you stepwise through the process of entering your article details and uploading your files. The system converts your article files to a single PDF file used in the peer-review process. Editable files (e.g., Word, LaTeX) are required to typeset your article for final publication. All correspondence, including notification of the Editor's decision and requests for revision, is sent by e-mail.

## PREPARATION

### Use of word processing software

It is important that the file be saved in the native format of the word processor used. The text should be in single-column format. Keep the layout of the text as simple as possible. Most formatting codes will be removed and replaced on processing the article. In particular, do not use the word processor's options to justify text or to hyphenate words. However, do use bold face, italics, subscripts, superscripts etc. When preparing tables, if you are using a table grid, use only one grid for each individual table and not a grid for each row. If no grid is used, use tabs, not spaces, to align columns. The electronic text should be prepared in a way very similar to that of conventional manuscripts

(see also the Guide to Publishing with Elsevier: <http://www.elsevier.com/guidepublication>). Note that source files of figures, tables and text graphics will be required whether or not you embed your figures in the text. See also the section on Electronic artwork.

To avoid unnecessary errors you are strongly advised to use the 'spell-check' and 'grammar-check' functions of your word processor.

## Article structure

### Subdivision - numbered sections

Divide your article into clearly defined and numbered sections. Subsections should be numbered 1.1 (then 1.1.1, 1.1.2, ...), 1.2, etc. (the abstract is not included in section numbering). Use this numbering also for internal cross-referencing: do not just refer to 'the text'. Any subsection may be given a brief heading. Each heading should appear on its own separate line.

### Introduction

State the objectives of the work and provide an adequate background, avoiding a detailed literature survey or a summary of the results.

### Material and methods

Provide sufficient detail to allow the work to be reproduced. Methods already published should be indicated by a reference: only relevant modifications should be described.

### Results

Results should be clear and concise.

### Discussion

This should explore the significance of the results of the work, not repeat them. A combined Results and Discussion section is often appropriate. Avoid extensive citations and discussion of published literature.

### Appendices

If there is more than one appendix, they should be identified as A, B, etc. Formulae and equations in appendices should be given separate numbering: Eq. (A.1), Eq. (A.2), etc.; in a subsequent appendix, Eq. (B.1) and so on. Similarly for tables and figures: Table A.1; Fig. A.1, etc.

## Essential title page information

- **Title.** Concise and informative. Titles are often used in information-retrieval systems. Avoid abbreviations and formulae where possible.
- **Author names and affiliations.** Where the family name may be ambiguous (e.g., a double name), please indicate this clearly. Present the authors' affiliation addresses (where the actual work was done) below the names. Indicate all affiliations with a lower-case superscript letter immediately after the author's name and in front of the appropriate address. Provide the full postal address of each affiliation, including the country name and, if available, the e-mail address of each author.
- **Corresponding author.** Clearly indicate who will handle correspondence at all stages of refereeing and publication, also post-publication. **Ensure that phone numbers (with country and area code) are provided in addition to the e-mail address and the complete postal address. Contact details must be kept up to date by the corresponding author.**
- **Present/permanent address.** If an author has moved since the work described in the article was done, or was visiting at the time, a 'Present address' (or 'Permanent address') may be indicated as a footnote to that author's name. The address at which the author actually did the work must be retained as the main, affiliation address. Superscript Arabic numerals are used for such footnotes.

## Abstract

A concise and factual abstract is required. The abstract should state briefly the purpose of the research, the principal results and major conclusions. An abstract is often presented separately from the article, so it must be able to stand alone. For this reason, References should be avoided, but if essential, then cite the author(s) and year(s). Also, non-standard or uncommon abbreviations should be avoided, but if essential they must be defined at their first mention in the abstract itself.

**The abstract must not exceed 200 words.**

## Graphical abstract

Although a graphical abstract is optional, its use is encouraged as it draws more attention to the online article. The graphical abstract should summarize the contents of the article in a concise, pictorial form designed to capture the attention of a wide readership. Graphical abstracts should be submitted as a separate file in the online submission system. Image size: Please provide an image with a minimum

of 531 × 1328 pixels (h × w) or proportionally more. The image should be readable at a size of 5 × 13 cm using a regular screen resolution of 96 dpi. Preferred file types: TIFF, EPS, PDF or MS Office files. See <http://www.elsevier.com/graphicalabstracts> for examples.

Authors can make use of Elsevier's Illustration and Enhancement service to ensure the best presentation of their images and in accordance with all technical requirements: [Illustration Service](#).

### **Highlights**

Highlights are mandatory for this journal. They consist of a short collection of bullet points that convey the core findings of the article and should be submitted in a separate editable file in the online submission system. Please use 'Highlights' in the file name and include 3 to 5 bullet points (maximum 85 characters, including spaces, per bullet point). See <http://www.elsevier.com/highlights> for examples.

### **Keywords**

Immediately after the abstract, provide a maximum of 6 keywords, using American spelling and avoiding general and plural terms and multiple concepts (avoid, for example, 'and', 'of'). Be sparing with abbreviations: only abbreviations firmly established in the field may be eligible. These keywords will be used for indexing purposes.

### **Abbreviations**

Define abbreviations that are not standard in this field in a footnote to be placed on the first page of the article. Such abbreviations that are unavoidable in the abstract must be defined at their first mention there, as well as in the footnote. Ensure consistency of abbreviations throughout the article.

### **Acknowledgements**

Collate acknowledgements in a separate section at the end of the article before the references and do not, therefore, include them on the title page, as a footnote to the title or otherwise. List here those individuals who provided help during the research (e.g., providing language help, writing assistance or proof reading the article, etc.).

### **Units**

Follow internationally accepted rules and conventions: use the international system of units (SI). If other units are mentioned, please give their equivalent in SI.

### **Database linking**

Elsevier encourages authors to connect articles with external databases, giving their readers one-click access to relevant databases that help to build a better understanding of the described research. Please refer to relevant database identifiers using the following format in your article: Database: xxxx (e.g., TAIR: AT1G01020; CCDC: 734053; PDB: 1XFN). See <http://www.elsevier.com/databaselinking> for more information and a full list of supported databases.

### **Math formulae**

Please submit math equations as editable text and not as images. Present simple formulae in line with normal text where possible and use the solidus (/) instead of a horizontal line for small fractional terms, e.g., X/Y. In principle, variables are to be presented in italics. Powers of e are often more conveniently denoted by exp. Number consecutively any equations that have to be displayed separately from the text (if referred to explicitly in the text).

### **Footnotes**

Footnotes should be used sparingly. Number them consecutively throughout the article. Many word processors can build footnotes into the text, and this feature may be used. Otherwise, please indicate the position of footnotes in the text and list the footnotes themselves separately at the end of the article. Do not include footnotes in the Reference list.

### **Artwork**

#### *Electronic artwork*

#### *General points*

- Make sure you use uniform lettering and sizing of your original artwork.
- Embed the used fonts if the application provides that option.
- Aim to use the following fonts in your illustrations: Arial, Courier, Times New Roman, Symbol, or use fonts that look similar.
- Number the illustrations according to their sequence in the text.
- Use a logical naming convention for your artwork files.
- Provide captions to illustrations separately.



- Size the illustrations close to the desired dimensions of the printed version.
- Submit each illustration as a separate file.

A detailed guide on electronic artwork is available on our website:

<http://www.elsevier.com/artworkinstructions>

**You are urged to visit this site; some excerpts from the detailed information are given here.**

#### *Formats*

If your electronic artwork is created in a Microsoft Office application (Word, PowerPoint, Excel) then please supply 'as is' in the native document format.

Regardless of the application used other than Microsoft Office, when your electronic artwork is finalized, please 'Save as' or convert the images to one of the following formats (note the resolution requirements for line drawings, halftones, and line/halftone combinations given below):

EPS (or PDF): Vector drawings, embed all used fonts.

TIFF (or JPEG): Color or grayscale photographs (halftones), keep to a minimum of 300 dpi.

TIFF (or JPEG): Bitmapped (pure black & white pixels) line drawings, keep to a minimum of 1000 dpi.

TIFF (or JPEG): Combinations bitmapped line/half-tone (color or grayscale), keep to a minimum of 500 dpi.

#### **Please do not:**

- Supply files that are optimized for screen use (e.g., GIF, BMP, PICT, WPG); these typically have a low number of pixels and limited set of colors;
- Supply files that are too low in resolution;
- Submit graphics that are disproportionately large for the content.

*Half-tone illustrations (photographs, electron micrographs)* must be submitted in the final size as they should appear in print, either singly or grouped into composite plates to a maximum size of 244 x 174 mm. They must be of a very good contrast. Where several illustrations make up a plate, they must have straight gutters of 2 mm width in between. If possible illustrations of very different contrast and/or brightness in one composite plate should be avoided. For labelling use transfer lettering of sufficient size (> 2mm) and clear visibility. Indicate magnification by a scale bar in the micrograph.

#### *Color artwork*

Please make sure that artwork files are in an acceptable format (TIFF (or JPEG), EPS (or PDF), or MS Office files) and with the correct resolution. If, together with your accepted article, you submit usable color figures then Elsevier will ensure, at no additional charge, that these figures will appear in color online (e.g., ScienceDirect and other sites) regardless of whether or not these illustrations are reproduced in color in the printed version. **For color reproduction in print, you will receive information regarding the costs from Elsevier after receipt of your accepted article.** Please indicate your preference for color: in print or online only. For further information on the preparation of electronic artwork, please see <http://www.elsevier.com/artworkinstructions>.

Please note: Because of technical complications that can arise by converting color figures to 'gray scale' (for the printed version should you not opt for color in print) please submit in addition usable black and white versions of all the color illustrations.

#### **Illustration services**

Elsevier's WebShop (<http://webshop.elsevier.com/illustrationservices>) offers Illustration Services to authors preparing to submit a manuscript but concerned about the quality of the images accompanying their article. Elsevier's expert illustrators can produce scientific, technical and medical-style images, as well as a full range of charts, tables and graphs. Image 'polishing' is also available, where our illustrators take your image(s) and improve them to a professional standard. Please visit the website to find out more.

#### *Figure captions*

Ensure that each illustration has a caption. Supply captions separately, not attached to the figure. A caption should comprise a brief title (**not** on the figure itself) and a description of the illustration. Keep text in the illustrations themselves to a minimum but explain all symbols and abbreviations used.

#### **Tables**

Please submit tables as editable text and not as images. Tables can be placed either next to the relevant text in the article, or on separate page(s) at the end. Number tables consecutively in accordance with their appearance in the text and place any table notes below the table body. Be sparing in the use of tables and ensure that the data presented in them do not duplicate results described elsewhere in the article. Please avoid using vertical rules.

#### **References**

### *Citation in text*

Please ensure that every reference cited in the text is also present in the reference list (and vice versa). Any references cited in the abstract must be given in full. Unpublished results and personal communications are not recommended in the reference list, but may be mentioned in the text. If these references are included in the reference list they should follow the standard reference style of the journal and should include a substitution of the publication date with either 'Unpublished results' or 'Personal communication'. Citation of a reference as 'in press' implies that the item has been accepted for publication.

### *Web references*

As a minimum, the full URL should be given and the date when the reference was last accessed. Any further information, if known (DOI, author names, dates, reference to a source publication, etc.), should also be given. Web references can be listed separately (e.g., after the reference list) under a different heading if desired, or can be included in the reference list.

### *References in a special issue*

Please ensure that the words 'this issue' are added to any references in the list (and any citations in the text) to other articles in the same Special Issue.

### *Reference style*

The reference style of the journal is Harvard 2. List all publications cited in the references following the text of the manuscript. In the text refer to the author's name (without initials) and year of publication (e.g. " Since Peterson (1993) has shown that..." or " This is in the agreement with results obtained later (Kramer, 1994)" ). If there are several references within one bracket, arrange chronologically. For three or more authors use the first author followed by " et al." , in the text. At the end of the manuscript arrange the list of references alphabetically by authors' names. Check the manuscript carefully to ensure that the spelling of authors' names and dates are exactly the same in the text as in the reference list.

*References should be given in the following form:*

#### *Journal Article:*

Hallberg, E., Johansson, K.U.I. and Wallén, R., 1997. Olfactory sensilla in crustaceans: morphology, sexual dimorphism, and distribution patterns. *Int J Insect Morphol Embryol* 26, 173-180.

#### *Book Chapter:*

Locke, M., 1998. Epidermis. In: Harrison, F.E. and Locke, M. (Eds), *Microscopic Anatomy of Invertebrates*, vol. 11A. Wiley-Liss, New York, pp. 75-138.

#### *Book:*

Chapman, R.F., 1998. *The Insects: Structure and Function*. 4th edition. Cambridge Univ. Press, Cambridge.

### **Video data**

Elsevier accepts video material and animation sequences to support and enhance your scientific research. Authors who have video or animation files that they wish to submit with their article are strongly encouraged to include links to these within the body of the article. This can be done in the same way as a figure or table by referring to the video or animation content and noting in the body text where it should be placed. All submitted files should be properly labeled so that they directly relate to the video file's content. In order to ensure that your video or animation material is directly usable, please provide the files in one of our recommended file formats with a preferred maximum size of 50 MB. Video and animation files supplied will be published online in the electronic version of your article in Elsevier Web products, including ScienceDirect: <http://www.sciencedirect.com>. Please supply 'stills' with your files: you can choose any frame from the video or animation or make a separate image. These will be used instead of standard icons and will personalize the link to your video data. For more detailed instructions please visit our video instruction pages at <http://www.elsevier.com/artworkinstructions>. Note: since video and animation cannot be embedded in the print version of the journal, please provide text for both the electronic and the print version for the portions of the article that refer to this content.

### Supplementary data

Elsevier accepts electronic supplementary material to support and enhance your scientific research. Supplementary files offer the author additional possibilities to publish supporting applications, high-resolution images, background datasets, sound clips and more. Supplementary files supplied will be published online alongside the electronic version of your article in Elsevier Web products, including ScienceDirect: <http://www.sciencedirect.com>. In order to ensure that your submitted material is directly usable, please provide the data in one of our recommended file formats. Authors should submit the material in electronic format together with the article and supply a concise and descriptive caption for each file. For more detailed instructions please visit our artwork instruction pages at <http://www.elsevier.com/artworkinstructions>.

### 3D models

You can enrich your online articles by providing 3D models (optional) in PLY, OBJ or U3D format, which will be visualized using the interactive viewer next to the article. Each 3D model will have to be zipped and uploaded to the online submission system via the '3D models' submission category. Please be advised that the recommended model size before zipping is 50–100 MB. Multiple models can be submitted. Please provide a short informative description for each model by filling in the 'Description' field when uploading a dataset. Note: all datasets will be available for download from the online article on ScienceDirect. If you have concerns about your data being downloadable, please provide a video instead. For more information see <http://www.elsevier.com/about/content-innovation/obj-ply-models> and <http://www.elsevier.com/about/content-innovation/u3d-models>.

### Submission checklist

The following list will be useful during the final checking of an article prior to sending it to the journal for review. Please consult this Guide for Authors for further details of any item.

#### Ensure that the following items are present:

One author has been designated as the corresponding author with contact details:

- E-mail address
- Full postal address
- Phone numbers

All necessary files have been uploaded, and contain:

- Keywords
- All figure captions
- All tables (including title, description, footnotes)

Further considerations

- Manuscript has been 'spell-checked' and 'grammar-checked'
- References are in the correct format for this journal
- All references mentioned in the Reference list are cited in the text, and vice versa
- Permission has been obtained for use of copyrighted material from other sources (including the Internet)

Printed version of figures (if applicable) in color or black-and-white

- Indicate clearly whether or not color or black-and-white in print is required.
- For reproduction in black-and-white, please supply black-and-white versions of the figures for printing purposes.

For any further information please visit our customer support site at <http://support.elsevier.com>.

## AFTER ACCEPTANCE

### Use of the Digital Object Identifier

The Digital Object Identifier (DOI) may be used to cite and link to electronic documents. The DOI consists of a unique alpha-numeric character string which is assigned to a document by the publisher upon the initial electronic publication. The assigned DOI never changes. Therefore, it is an ideal medium for citing a document, particularly 'Articles in press' because they have not yet received their full bibliographic information. Example of a correctly given DOI (in URL format; here an article in the journal *Physics Letters B*):

<http://dx.doi.org/10.1016/j.physletb.2010.09.059>

When you use a DOI to create links to documents on the web, the DOIs are guaranteed never to change.

## **Proofs**

One set of page proofs (as PDF files) will be sent by e-mail to the corresponding author (if we do not have an e-mail address then paper proofs will be sent by post) or, a link will be provided in the e-mail so that authors can download the files themselves. Elsevier now provides authors with PDF proofs which can be annotated; for this you will need to download Adobe Reader version 9 (or higher) available free from <http://get.adobe.com/reader>. Instructions on how to annotate PDF files will accompany the proofs (also given online). The exact system requirements are given at the Adobe site: <http://www.adobe.com/products/reader/tech-specs.html>.

If you do not wish to use the PDF annotations function, you may list the corrections (including replies to the Query Form) and return them to Elsevier in an e-mail. Please list your corrections quoting line number. If, for any reason, this is not possible, then mark the corrections and any other comments (including replies to the Query Form) on a printout of your proof and return by fax, or scan the pages and e-mail, or by post. Please use this proof only for checking the typesetting, editing, completeness and correctness of the text, tables and figures. Significant changes to the article as accepted for publication will only be considered at this stage with permission from the Editor. We will do everything possible to get your article published quickly and accurately. It is important to ensure that all corrections are sent back to us in one communication: please check carefully before replying, as inclusion of any subsequent corrections cannot be guaranteed. Proofreading is solely your responsibility.

## **Offprints**

The corresponding author, at no cost, will be provided with 25 free paper offprints, or, alternatively, a personalized link providing 50 days free access to the final published version of the article on [ScienceDirect](#). This link can also be used for sharing via email and social networks. For an extra charge, more paper offprints can be ordered via the offprint order form which is sent once the article is accepted for publication. Both corresponding and co-authors may order offprints at any time via Elsevier's WebShop (<http://webshop.elsevier.com/myarticleservices/offprints>). Authors requiring printed copies of multiple articles may use Elsevier WebShop's 'Create Your Own Book' service to collate multiple articles within a single cover (<http://webshop.elsevier.com/myarticleservices/booklets>).

## **AUTHOR INQUIRIES**

You can track your submitted article at [http://help.elsevier.com/app/answers/detail/a\\_id/89/p/8045/](http://help.elsevier.com/app/answers/detail/a_id/89/p/8045/). You can track your accepted article at <http://www.elsevier.com/trackarticle>. You are also welcome to contact Customer Support via <http://support.elsevier.com>.

© Copyright 2014 Elsevier | <http://www.elsevier.com>