

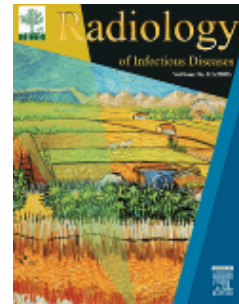


RADIOLOGY OF INFECTIOUS DISEASES

AUTHOR INFORMATION PACK

TABLE OF CONTENTS

●	Description	p.1
●	Abstracting and Indexing	p.1
●	Editorial Board	p.1
●	Guide for Authors	p.4



ISSN: 2352-6211

DESCRIPTION

The aim of this journal is to provide a platform to publish and review empirical articles, which focus on the diagnostic or interventional imaging of infectious diseases (including all kinds of varieties such as virus hepatitis, HIV/AIDS, tuberculosis, etc.). Submitted manuscripts may report empirical data like diagnostic imaging, interventional imaging, beneficial photos, clinical studies, and basic studies. And the journal accepts original articles, reviews, letters and case reports. The criteria for acceptance of manuscripts include novel technology, theories, concepts, discovery and experiments on imaging of infectious diseases.

Papers published in the journal may cover a wide range of topics in imaging of infectious diseases, including, but not limited to:

- Fundamental Topics - The regular research articles, experiences and case reports on diagnostic or interventional imaging of infectious diseases including CT imaging, MR imaging, Digital Radiography, PET-CT, Ultrasound imaging, DSA and so on.
- Functional imaging in infectious diseases - The survey of functional imaging combining with physiopathology about infectious diseases.
- Molecular imaging in infectious diseases - The research to examine infectious diseases from molecular mechanism.
- Basic study on imaging of infectious diseases - Both clinical and animal experiments are acceptable.
- Novel theories, technology, concepts or discovery on diagnostic or interventional imaging of infectious diseases.

ABSTRACTING AND INDEXING

Directory of Open Access Journals (DOAJ)

EDITORIAL BOARD

Editor-in-Chief

Hongjun Li, Capital Medical University Youan Hospital Department of Radiology, Beijing, China

Co Editor-in-Chief

Jie Tian, Institute of Automation Chinese Academy of Sciences, Beijing, China

Honor Editors

Jianping Dai, Beijing Tiantan Hospital, Beijing, China

Garry Gold, Stanford University Department of Radiology, Stanford, United States

Bruce Hillman, American College of Radiology, United States

Mark Schweitzer, Yale University School of Medicine Division of Perinatal Medicine, New Haven, United States

Associate Editor

Vineet Bhandari, Yale University School of Medicine Division of Perinatal Medicine, New Haven, United States

Bo Gao, Qindao University Medical College Affiliated Yantai Yuhuangding Hospital, Yantai, China

Madhav Hedge, Dr Ambedkar Institute of Technology, Bangalore, India

Mingqian Huang, Stony Brook University, Department of Radiology, Hospital, United States

Wenya Liu, Xinjiang Medical University Imaging Center, Wulumuqi, China

Liang Wang, Huazhong University of Science and Technology Tongji Medical College, Wuhan, China

Jianlin Wu, Affiliated Zhongshan Hospital of Dalian University Department of Medical Imaging Center, Dalian, China

Renhua Wu, Second Affiliated Hospital of Shantou University Medical College, Shantou, China

Chi-Shing Zee, University of Southern California Keck School of Medicine, Los Angeles, United States

Editorial Board

Lin Ai, Beijing Tiantan Hospital Imaging Center of Neuroscience, Beijing, China

Colin M. Archer, GE Healthcare Partners, London, United Kingdom

Feng Chen, Hainan General Hospital, Department of Radiology, Hainan, China

Liang Chen, Jilin University First Hospital Department of Radiology, Jilin, China

Jingliang Cheng, The First Affiliated Hospital of Zhengzhou University, Department of MRI, Zhengzhou, China

Małgorzata M. Dobrzyńska, National Institute of Public Health National Institute of Hygiene, Warszawa, Poland

Xiangying Du, Xuanwu Hospital Department of Radiology, Beijing, China

Xiaoyi Duan, Xi'an Jiaotong University Department of Nursing, Xian, China

Joel E. Fishman, Jackson Memorial Hospital, Department of Radiology, Miami, Florida, United States

Fabao Gao, Sichuan University West China Hospital Department of Radiology, Chengdu, China

Jianbo Gao, The First Affiliated Hospital of Zhengzhou University, Department of Radiology, Zhenzhou, China

Gary Gong, Johns Hopkins Medicine Russell H Morgan Department of Radiology and Radiological Science, Baltimore, Maryland, United States

Nan Hong, Peking University People's Hospital Department of Radiology, Beijing, China

Yi Huan, Xijing Hospital Department of Radiology, Xi'an, China

Wenxiao Jia, Xinjiang Medical University Affiliated Second Hospital, Wulumuqi, China

Chenwang Jin, Xi'an Jiaotong University Medical College First Affiliated Hospital Department of Medical Imaging, Xi'an, China

Jianyi Kuang, Sun Yat-sen University First Affiliated Hospital Department of Radiology, Guangzhou, China

Tryphon Lambrou, University of Lincoln School of Computer Science, Lincoln, United Kingdom

Jianjun Li, Hainan Medical University Department of Radiology, Hainan, China

Ping Li, Second Affiliated Hospital of Harbin Medical University Department of Radiology, Harbin, China

Xiaoming Li, Tongji Hospital of Tongji Medical College of Huazhong University of Science and Technology Department of Radiology, Wuhan, China

Hanqiu Liu, Huashan Hospital Fudan University Department of Radiology, Shanghai, China

Liping Liu, First Hospital of Shanxi Medical University Department of Radiology, Taiyuan, China

Qiang Liu, Shandong Medical Imaging Research Institute Department of MR Imaging, Jinan, Shandong, China

Puxuan Lu, The Third People's Hospital of Shenzhen Department of Radiology, Shenzhen, China

Zhiyan Lu, Wuhan University Zhongnan Hospital Medical Imaging Centre, Wuhan, China

Lin Luo, First Affiliated Hospital of Baotou Medical College Department of Radiology, Baotou, China

Guolin Ma, China-Japan Friendship Hospital Department of Radiology, Beijing, China

Jun Ma, Beijing Tiantan Hospital Imaging Center of Neuroscience, Beijing, China

Lin Ma, Chinese PLA General Hospital, Beijing, China

S.M.J. Mortazavi, Shiraz University of Medical Sciences Medical School, Shiraz, Iran, Islamic Republic of

Mark Mullins, Emory University Department of Radiology and Imaging Sciences, Atlanta, Georgia, United States

Masahiro Narita, University of Washington Division of Pulmonary and Critical Care Medicine, Seattle, Washington, United States

Shinong Pan, Shengjing Hospital of China Medical University Department of Radiology, Shenyang, China

Santosh R. Patil, PMNM Dental College and Hospital Bagalkot, Oral Medicine and Radiology, Karnataka, India

Yun Peng, Capital Medical University Beijing Children's Hospital Imaging Centre, Beijing, China

Bensheng Qiu, University of Science and Technology of China Biomedical Engineering Center, Shenzhen, China

Yuxin Shi, Shanghai Public Health Clinical Center Department of Radiology, Shanghai, China

Emanuele Siano, Hospital Cochin Nuclear Medicine, Paris, France

Wei Song, Peking Union Medical College Hospital Department of Radiology, Beijing, China

Damien Taylor, Castle Hill Hospital Radiology Department, Cottingham, United Kingdom

Mathew L. Thakur, Thomas Jefferson University Department of Radiology, Philadelphia, Pennsylvania, United States

Vijeev Vasudevan, Krishnadevaraya College of Dental Sciences and Hospital, Department of Oral Medicine and Radiology, Bangalore, India
Jian Wang, Third Military Medical University Southwest Hospital Department of Pathology, Chongqing, China
Jian Wang, Xinjiang Medical University Affiliated First Hospital, Wulumuqi, China
Rengui Wang, Capital Medical University Affiliated Beijing Shijitan Hospital Department of Radiology, Beijing, China
Liming Xia, Tongji Hospital of Tongji Medical College of Huazhong University of Science and Technology Department of Radiology, Wuhan, China
Shuang Xia, Tianjin First Central Hospital Department of Radiology, Tianjin, China
Junfang Xian, Beijing Consultation Center for ENT Diseases, Beijing, China
Wei Xing, Changzhou First People's Hospital Department of Medical Imaging, Changzhou, China
Huadan Xue, Peking Union Medical College Hospital Department of Radiology, Beijing, China
Xiaoming Yang, University of Washington Image-Guided Bio-Molecular Intervention Laboratory, Washington, United States
Zhengan Yang, Capital Medical University Affiliated Beijing Friendship Hospital Department of Radiology, Beijing, China
Huishu Yuan, Peking University Third Hospital Department of Radiology, Beijing, China
Xinyu Yuan, Capital Institute of Pediatrics, Department of Radiology, Beijing, China
Jinsong Zhang, Xijing Hospital Department of Radiology, Xi'an, China
Wanshi Zhang, Air Force General Hospital PLA, Beijing, China
Weihong Zhang, Peking Union Medical College Hospital Department of Radiology, Beijing, China
Xiaochun Zhang, Third Military Medical University Southwest Hospital, Chongqing, China
Yong Zhang, The First Affiliated Hospital of Zhengzhou University, Department of Radiology, Zhengzhou, China
Shihua Zhao, Chinese Academy of Medical Sciences & Peking Union Medical College Fuwai Hospital Department of Radiology and Imaging, Beijing, China
Xiangpeng Zheng, Huadong Hospital Affiliated to Fudan University Department of Radiology, Shanghai, China
Zhuozhao Zheng, Peking University Third Hospital Department of Radiology, Beijing, China

Managing Editor

Jinli Ding, Capital Medical University Beijing Children's Hospital Imaging Centre, Beijing, China
Jiaojiao Liu, Capital Medical University Youan Hospital Department of Radiology, Beijing, China
Jun Sun, Capital Medical University Youan Hospital Department of Radiology, Beijing, China

Office Editors

Li Li, Capital Medical University Beijing Children's Hospital Imaging Centre, Beijing, China
Meiji Ren, Capital Medical University Beijing Children's Hospital Imaging Centre, Beijing, China
Jun Sun, Capital Medical University Beijing Children's Hospital Imaging Centre, Beijing, China

GUIDE FOR AUTHORS

INTRODUCTION

Types of Paper

Contributions falling into the following categories will be considered for publication: Original research papers, reviews, letters and case reports.

Please ensure that you select the appropriate article type from the list of options when making your submission. Authors contributing to special issues should ensure that they select the special issue article type from this list.

Submission checklist

You can use this list to carry out a final check of your submission before you send it to the journal for review. Please check the relevant section in this Guide for Authors for more details.

Ensure that the following items are present:

One author has been designated as the corresponding author with contact details:

- E-mail address
- Full postal address

All necessary files have been uploaded:

Manuscript:

- Include keywords
- All figures (include relevant captions)
- All tables (including titles, description, footnotes)
- Ensure all figure and table citations in the text match the files provided
- Indicate clearly if color should be used for any figures in print

Graphical Abstracts / Highlights files (where applicable)

Supplemental files (where applicable)

Further considerations

- Manuscript has been 'spell checked' and 'grammar checked'
- All references mentioned in the Reference List are cited in the text, and vice versa
- Permission has been obtained for use of copyrighted material from other sources (including the Internet)
- A competing interests statement is provided, even if the authors have no competing interests to declare
- Journal policies detailed in this guide have been reviewed
- Referee suggestions and contact details provided, based on journal requirements

For further information, visit our [Support Center](#).

BEFORE YOU BEGIN

Ethics in publishing

Please see our information pages on [Ethics in publishing](#) and [Ethical guidelines for journal publication](#).

Studies in humans and animals

If the work involves the use of human subjects, the author should ensure that the work described has been carried out in accordance with [The Code of Ethics of the World Medical Association](#) (Declaration of Helsinki) for experiments involving humans. The manuscript should be in line with the [Recommendations for the Conduct, Reporting, Editing and Publication of Scholarly Work in Medical Journals](#) and aim for the inclusion of representative human populations (sex, age and ethnicity) as per those recommendations. The terms [sex and gender](#) should be used correctly.

Authors should include a statement in the manuscript that informed consent was obtained for experimentation with human subjects. The privacy rights of human subjects must always be observed.

All animal experiments should comply with the [ARRIVE guidelines](#) and should be carried out in accordance with the U.K. Animals (Scientific Procedures) Act, 1986 and associated guidelines, [EU Directive 2010/63/EU for animal experiments](#), or the National Institutes of Health guide for the care

and use of Laboratory animals (NIH Publications No. 8023, revised 1978) and the authors should clearly indicate in the manuscript that such guidelines have been followed. The sex of animals must be indicated, and where appropriate, the influence (or association) of sex on the results of the study.

Declaration of interest

All authors must disclose any financial and personal relationships with other people or organizations that could inappropriately influence (bias) their work. Examples of potential competing interests include employment, consultancies, stock ownership, honoraria, paid expert testimony, patent applications/registrations, and grants or other funding. Authors must disclose any interests in two places: 1. A summary declaration of interest statement in the title page file (if double-blind) or the manuscript file (if single-blind). If there are no interests to declare then please state this: 'Declarations of interest: none'. This summary statement will be ultimately published if the article is accepted. 2. Detailed disclosures as part of a separate Declaration of Interest form, which forms part of the journal's official records. It is important for potential interests to be declared in both places and that the information matches. [More information](#).

Submission declaration and verification

Submission of an article implies that the work described has not been published previously (except in the form of an abstract, a published lecture or academic thesis, see '[Multiple, redundant or concurrent publication](#)' for more information), that it is not under consideration for publication elsewhere, that its publication is approved by all authors and tacitly or explicitly by the responsible authorities where the work was carried out, and that, if accepted, it will not be published elsewhere in the same form, in English or in any other language, including electronically without the written consent of the copyright-holder. To verify originality, your article may be checked by the originality detection service [Crossref Similarity Check](#).

Use of inclusive language

Inclusive language acknowledges diversity, conveys respect to all people, is sensitive to differences, and promotes equal opportunities. Articles should make no assumptions about the beliefs or commitments of any reader, should contain nothing which might imply that one individual is superior to another on the grounds of race, sex, culture or any other characteristic, and should use inclusive language throughout. Authors should ensure that writing is free from bias, for instance by using 'he or she', 'his/her' instead of 'he' or 'his', and by making use of job titles that are free of stereotyping (e.g. 'chairperson' instead of 'chairman' and 'flight attendant' instead of 'stewardess').

Author contributions

For transparency, we encourage authors to submit an author statement file outlining their individual contributions to the paper using the relevant CRediT roles: Conceptualization; Data curation; Formal analysis; Funding acquisition; Investigation; Methodology; Project administration; Resources; Software; Supervision; Validation; Visualization; Roles/Writing - original draft; Writing - review & editing. Authorship statements should be formatted with the names of authors first and CRediT role(s) following. [More details and an example](#)

Changes to authorship

Authors are expected to consider carefully the list and order of authors **before** submitting their manuscript and provide the definitive list of authors at the time of the original submission. Any addition, deletion or rearrangement of author names in the authorship list should be made only **before** the manuscript has been accepted and only if approved by the journal Editor. To request such a change, the Editor must receive the following from the **corresponding author**: (a) the reason for the change in author list and (b) written confirmation (e-mail, letter) from all authors that they agree with the addition, removal or rearrangement. In the case of addition or removal of authors, this includes confirmation from the author being added or removed.

Only in exceptional circumstances will the Editor consider the addition, deletion or rearrangement of authors **after** the manuscript has been accepted. While the Editor considers the request, publication of the manuscript will be suspended. If the manuscript has already been published in an online issue, any requests approved by the Editor will result in a corrigendum.

Copyright

Upon acceptance of an article, authors will be asked to complete a 'Journal Publishing Agreement' (see [more information](#) on this). An e-mail will be sent to the corresponding author confirming receipt of the manuscript together with a 'Journal Publishing Agreement' form or a link to the online version of this agreement.

Author rights

As an author you (or your employer or institution) have certain rights to reuse your work. [More information](#).

Elsevier supports responsible sharing

Find out how you can [share your research](#) published in Elsevier journals.

Role of the funding source

You are requested to identify who provided financial support for the conduct of the research and/or preparation of the article and to briefly describe the role of the sponsor(s), if any, in study design; in the collection, analysis and interpretation of data; in the writing of the report; and in the decision to submit the article for publication. If the funding source(s) had no such involvement then this should be stated.

Open access

Please visit our [Open Access page](#) for more information.

Elsevier Researcher Academy

[Researcher Academy](#) is a free e-learning platform designed to support early and mid-career researchers throughout their research journey. The "Learn" environment at Researcher Academy offers several interactive modules, webinars, downloadable guides and resources to guide you through the process of writing for research and going through peer review. Feel free to use these free resources to improve your submission and navigate the publication process with ease.

Language (usage and editing services)

Please write your text in good English (American or British usage is accepted, but not a mixture of these). Authors who feel their English language manuscript may require editing to eliminate possible grammatical or spelling errors and to conform to correct scientific English may wish to use the [English Language Editing service](#) available from Elsevier's Author Services.

Submission

Submission to this journal proceeds totally online. Use the following guidelines to prepare your article. Via the homepage of this journal (<http://ees.elsevier.com/JRID>) you will be guided stepwise through the creation and uploading of the various files. The system automatically converts source files to a single Adobe Acrobat PDF version of the article, which is used in the peer-review process. Please note that even though manuscript source files are converted to PDF at submission for the review process, these source files are needed for further processing after acceptance. All correspondence, including notification of the Editor's decision and requests for revision, takes place by e-mail and via the author's homepage, removing the need for a hard-copy paper trail. If you are unable to provide an electronic version, please contact the editorial office prior to submission [example: e-mail: rid@ccmu.edu.cn; telephone: +86 010 83997337].

Additional Information

Tables and figures may be presented with captions within the main body of the manuscript; if so, figures should additionally be uploaded as high resolution files.

PREPARATION

Peer review

This journal operates a single blind review process. All contributions will be initially assessed by the editor for suitability for the journal. Papers deemed suitable are then typically sent to a minimum of two independent expert reviewers to assess the scientific quality of the paper. The Editor is responsible for the final decision regarding acceptance or rejection of articles. The Editor's decision is final. [More information on types of peer review](#).

Use of word processing software

It is important that the file be saved in the native format of the word processor used. The text should be in single-column format. Keep the layout of the text as simple as possible. Most formatting codes will be removed and replaced on processing the article. In particular, do not use the word processor's options to justify text or to hyphenate words. However, do use bold face, italics, subscripts, superscripts etc. When preparing tables, if you are using a table grid, use only one grid for each individual table and not a grid for each row. If no grid is used, use tabs, not spaces, to align columns. The electronic text should be prepared in a way very similar to that of conventional manuscripts (see

also the [Guide to Publishing with Elsevier](#)). Note that source files of figures, tables and text graphics will be required whether or not you embed your figures in the text. See also the section on Electronic artwork.

To avoid unnecessary errors you are strongly advised to use the 'spell-check' and 'grammar-check' functions of your word processor.

LaTeX

If the LaTeX file is suitable, proofs will be produced without rekeying the text. The article should preferably be written using Elsevier's document class "elsarticle", or alternatively any of the other recognized classes and formats supported in Elsevier's electronic submissions system, for further information visit our [Support Center](#).

The Elsevier "elsarticle" LaTeX style file package (including detailed instructions for LaTeX preparation) can be obtained from the Quickguide: <https://www.elsevier.com/latex>. It consists of the file: elsarticle.cls, complete user documentation for the class file, bibliographic style files in various styles, and template files for a quick start.

Article structure

Subdivision - numbered sections

Divide your article into clearly defined and numbered sections. Subsections should be numbered 1.1 (then 1.1.1, 1.1.2, ...), 1.2, etc. (the abstract is not included in section numbering). Use this numbering also for internal cross-referencing: do not just refer to 'the text'. Any subsection may be given a brief heading. Each heading should appear on its own separate line.

Introduction

State the objectives of the work and provide an adequate background, avoiding a detailed literature survey or a summary of the results.

Material and methods

Provide sufficient details to allow the work to be reproduced by an independent researcher. Methods that are already published should be summarized, and indicated by a reference. If quoting directly from a previously published method, use quotation marks and also cite the source. Any modifications to existing methods should also be described.

Theory/calculation

A Theory section should extend, not repeat, the background to the article already dealt with in the Introduction and lay the foundation for further work. In contrast, a Calculation section represents a practical development from a theoretical basis.

Results

Results should be clear and concise.

Discussion

This should explore the significance of the results of the work, not repeat them. A combined Results and Discussion section is often appropriate. Avoid extensive citations and discussion of published literature.

Conclusions

The main conclusions of the study may be presented in a short Conclusions section, which may stand alone or form a subsection of a Discussion or Results and Discussion section.

Appendices

If there is more than one appendix, they should be identified as A, B, etc. Formulae and equations in appendices should be given separate numbering: Eq. (A.1), Eq. (A.2), etc.; in a subsequent appendix, Eq. (B.1) and so on. Similarly for tables and figures: Table A.1; Fig. A.1, etc.

Essential title page information

- **Title.** Concise and informative. Titles are often used in information-retrieval systems. Avoid abbreviations and formulae where possible.
- **Author names and affiliations.** Please clearly indicate the given name(s) and family name(s) of each author and check that all names are accurately spelled. You can add your name between parentheses in your own script behind the English transliteration. Present the authors' affiliation addresses (where the actual work was done) below the names. Indicate all affiliations with a lower-case superscript letter immediately after the author's name and in front of the appropriate address. Provide the full postal address of each affiliation, including the country name and, if available, the e-mail address of each author.

• **Corresponding author.** Clearly indicate who will handle correspondence at all stages of refereeing and publication, also post-publication. This responsibility includes answering any future queries about Methodology and Materials. **Ensure that the e-mail address is given and that contact details are kept up to date by the corresponding author.**

• **Present/permanent address.** If an author has moved since the work described in the article was done, or was visiting at the time, a 'Present address' (or 'Permanent address') may be indicated as a footnote to that author's name. The address at which the author actually did the work must be retained as the main, affiliation address. Superscript Arabic numerals are used for such footnotes.

Highlights

Highlights are optional yet highly encouraged for this journal, as they increase the discoverability of your article via search engines. They consist of a short collection of bullet points that capture the novel results of your research as well as new methods that were used during the study (if any). Please have a look at the examples here: [example Highlights](#).

Highlights should be submitted in a separate editable file in the online submission system. Please use 'Highlights' in the file name and include 3 to 5 bullet points (maximum 85 characters, including spaces, per bullet point).

Abstract

A concise and factual abstract is required. The abstract should state briefly the purpose of the research, the principal results and major conclusions. An abstract is often presented separately from the article, so it must be able to stand alone. For this reason, References should be avoided, but if essential, then cite the author(s) and year(s). Also, non-standard or uncommon abbreviations should be avoided, but if essential they must be defined at their first mention in the abstract itself.

Graphical abstract

Although a graphical abstract is optional, its use is encouraged as it draws more attention to the online article. The graphical abstract should summarize the contents of the article in a concise, pictorial form designed to capture the attention of a wide readership. Graphical abstracts should be submitted as a separate file in the online submission system. Image size: Please provide an image with a minimum of 531 × 1328 pixels (h × w) or proportionally more. The image should be readable at a size of 5 × 13 cm using a regular screen resolution of 96 dpi. Preferred file types: TIFF, EPS, PDF or MS Office files. You can view [Example Graphical Abstracts](#) on our information site.

Authors can make use of Elsevier's [Illustration Services](#) to ensure the best presentation of their images and in accordance with all technical requirements.

Keywords

Immediately after the abstract, provide a maximum of 6 keywords, using American spelling and avoiding general and plural terms and multiple concepts (avoid, for example, 'and', 'of'). Be sparing with abbreviations: only abbreviations firmly established in the field may be eligible. These keywords will be used for indexing purposes.

Abbreviations

Define abbreviations that are not standard in this field in a footnote to be placed on the first page of the article. Such abbreviations that are unavoidable in the abstract must be defined at their first mention there, as well as in the footnote. Ensure consistency of abbreviations throughout the article.

Acknowledgements

Collate acknowledgements in a separate section at the end of the article before the references and do not, therefore, include them on the title page, as a footnote to the title or otherwise. List here those individuals who provided help during the research (e.g., providing language help, writing assistance or proof reading the article, etc.).

Formatting of funding sources

List funding sources in this standard way to facilitate compliance to funder's requirements:

Funding: This work was supported by the National Institutes of Health [grant numbers xxxx, yyyy]; the Bill & Melinda Gates Foundation, Seattle, WA [grant number zzzz]; and the United States Institutes of Peace [grant number aaaa].

It is not necessary to include detailed descriptions on the program or type of grants and awards. When funding is from a block grant or other resources available to a university, college, or other research institution, submit the name of the institute or organization that provided the funding.

If no funding has been provided for the research, please include the following sentence:

This research did not receive any specific grant from funding agencies in the public, commercial, or not-for-profit sectors.

Units

Follow internationally accepted rules and conventions: use the international system of units (SI). If other units are mentioned, please give their equivalent in SI.

Math formulae

Please submit math equations as editable text and not as images. Present simple formulae in line with normal text where possible and use the solidus (/) instead of a horizontal line for small fractional terms, e.g., X/Y. In principle, variables are to be presented in italics. Powers of e are often more conveniently denoted by exp. Number consecutively any equations that have to be displayed separately from the text (if referred to explicitly in the text).

Footnotes

Footnotes should be used sparingly. Number them consecutively throughout the article. Many word processors can build footnotes into the text, and this feature may be used. Otherwise, please indicate the position of footnotes in the text and list the footnotes themselves separately at the end of the article. Do not include footnotes in the Reference list.

Artwork

Electronic artwork

General points

- Make sure you use uniform lettering and sizing of your original artwork.
- Embed the used fonts if the application provides that option.
- Aim to use the following fonts in your illustrations: Arial, Courier, Times New Roman, Symbol, or use fonts that look similar.
- Number the illustrations according to their sequence in the text.
- Use a logical naming convention for your artwork files.
- Provide captions to illustrations separately.
- Size the illustrations close to the desired dimensions of the published version.
- Submit each illustration as a separate file.
- Ensure that color images are accessible to all, including those with impaired color vision.

A detailed [guide on electronic artwork](#) is available.

You are urged to visit this site; some excerpts from the detailed information are given here.

Formats

If your electronic artwork is created in a Microsoft Office application (Word, PowerPoint, Excel) then please supply 'as is' in the native document format.

Regardless of the application used other than Microsoft Office, when your electronic artwork is finalized, please 'Save as' or convert the images to one of the following formats (note the resolution requirements for line drawings, halftones, and line/halftone combinations given below):

EPS (or PDF): Vector drawings, embed all used fonts.

TIFF (or JPEG): Color or grayscale photographs (halftones), keep to a minimum of 300 dpi.

TIFF (or JPEG): Bitmapped (pure black & white pixels) line drawings, keep to a minimum of 1000 dpi.

TIFF (or JPEG): Combinations bitmapped line/half-tone (color or grayscale), keep to a minimum of 500 dpi.

Please do not:

- Supply files that are optimized for screen use (e.g., GIF, BMP, PICT, WPG); these typically have a low number of pixels and limited set of colors;
- Supply files that are too low in resolution;
- Submit graphics that are disproportionately large for the content.

Color artwork

Please make sure that artwork files are in an acceptable format (TIFF (or JPEG), EPS (or PDF), or MS Office files) and with the correct resolution. If, together with your accepted article, you submit usable color figures then Elsevier will ensure, at no additional charge, that these figures will appear in color online (e.g., ScienceDirect and other sites) regardless of whether or not these illustrations are reproduced in color in the printed version. **For color reproduction in print, you will receive**

information regarding the costs from Elsevier after receipt of your accepted article. Please indicate your preference for color: in print or online only. [Further information on the preparation of electronic artwork.](#)

Figure captions

Ensure that each illustration has a caption. Supply captions separately, not attached to the figure. A caption should comprise a brief title (**not** on the figure itself) and a description of the illustration. Keep text in the illustrations themselves to a minimum but explain all symbols and abbreviations used.

Tables

Please submit tables as editable text and not as images. Tables can be placed either next to the relevant text in the article, or on separate page(s) at the end. Number tables consecutively in accordance with their appearance in the text and place any table notes below the table body. Be sparing in the use of tables and ensure that the data presented in them do not duplicate results described elsewhere in the article. Please avoid using vertical rules and shading in table cells.

References

Citation in text

Please ensure that every reference cited in the text is also present in the reference list (and vice versa). Any references cited in the abstract must be given in full. Unpublished results and personal communications are not recommended in the reference list, but may be mentioned in the text. If these references are included in the reference list they should follow the standard reference style of the journal and should include a substitution of the publication date with either 'Unpublished results' or 'Personal communication'. Citation of a reference as 'in press' implies that the item has been accepted for publication.

Web references

As a minimum, the full URL should be given and the date when the reference was last accessed. Any further information, if known (DOI, author names, dates, reference to a source publication, etc.), should also be given. Web references can be listed separately (e.g., after the reference list) under a different heading if desired, or can be included in the reference list.

References in a special issue

Please ensure that the words 'this issue' are added to any references in the list (and any citations in the text) to other articles in the same Special Issue.

Reference management software

Most Elsevier journals have their reference template available in many of the most popular reference management software products. These include all products that support [Citation Style Language styles](#), such as [Mendeley](#). Using citation plug-ins from these products, authors only need to select the appropriate journal template when preparing their article, after which citations and bibliographies will be automatically formatted in the journal's style. If no template is yet available for this journal, please follow the format of the sample references and citations as shown in this Guide. If you use reference management software, please ensure that you remove all field codes before submitting the electronic manuscript. [More information on how to remove field codes from different reference management software.](#)

Users of Mendeley Desktop can easily install the reference style for this journal by clicking the following link:

<http://open.mendeley.com/use-citation-style/radiology-of-infectious-diseases>

When preparing your manuscript, you will then be able to select this style using the Mendeley plug-ins for Microsoft Word or LibreOffice.

Reference Style

Text: Indicate references by superscript numbers in the text. The actual authors can be referred to, but the reference number(s) must always be given.

List: Number the references in the list in the order in which they appear in the text.

Examples:

Reference to a journal publication:

1. Van der Geer J, Hanraads JAJ, Lupton RA. The art of writing a scientific article. *J Sci Commun* 2000;163:51-9.

Reference to a book:

2. Strunk Jr W, White EB. *The elements of style*. 3rd ed. New York: Macmillan; 1979.

Reference to a chapter in an edited book:

3. Mettam GR, Adams LB. How to prepare an electronic version of your article. In: Jones BS, Smith RZ, editors. Introduction to the electronic age. New York: E- Publishing Inc; 1999, p. 281-304. Note shortened form for last page number. e.g., 51-9, and that for more than 6 authors the first 6 should be listed followed by 'et al.' For further details you are referred to "Uniform Requirements for Manuscripts submitted to Biomedical Journals" (J Am Med Assoc 1997;277:927-34), see also http://www.nlm.nih.gov/tsd/serials/terms_cond.html

Journal Abbreviations Source

Journal names should be abbreviated according to

Index Medicus journal abbreviations: <http://www.nlm.nih.gov/tsd/serials/lji.html>;

List of title word abbreviations: <http://www.issn.org/2-22661-LTWA-online.php>;

CAS (Chemical Abstracts Service): <http://www.cas.org/sent.html>.

AFTER ACCEPTANCE

Proofs

One set of page proofs (as PDF files) will be sent by e-mail to the corresponding author (if we do not have an e-mail address then paper proofs will be sent by post) or, a link will be provided in the e-mail so that authors can download the files themselves. Elsevier now provides authors with PDF proofs which can be annotated; for this you will need to download Adobe Reader version 7 (or higher) available free from <http://get.adobe.com/reader>. Instructions on how to annotate PDF files will accompany the proofs (also given online). The exact system requirements are given at the Adobe site: <http://www.adobe.com/products/reader/systemreqs>.

If you do not wish to use the PDF annotations function, you may list the corrections (including replies to the Query Form) and return them to Elsevier in an e-mail. Please list your corrections quoting line number. If, for any reason, this is not possible, then mark the corrections and any other comments (including replies to the Query Form) on a printout of your proof and return by fax, or scan the pages and e-mail, or by post. Please use this proof only for checking the typesetting, editing, completeness and correctness of the text, tables and figures. Significant changes to the article as accepted for publication will only be considered at this stage with permission from the Editor. We will do everything possible to get your article published quickly and accurately - please let us have all your corrections within 7 days. It is important to ensure that all corrections are sent back to us in one communication: please check carefully before replying, as inclusion of any subsequent corrections cannot be guaranteed. Proofreading is solely your responsibility. Note that Elsevier may proceed with the publication of your article if no response is received.

Offprints

The corresponding author will be notified and receive a link to the published version of the open access article on [ScienceDirect](#). This link is in the form of an article DOI link which can be shared via email and social networks. For an extra charge, paper offprints can be ordered via the offprint order form which is sent once the article is accepted for publication. Both corresponding and co-authors may order offprints at any time via Elsevier's [Author Services](#).

AUTHOR INQUIRIES

Visit the [Elsevier Support Center](#) to find the answers you need. Here you will find everything from Frequently Asked Questions to ways to get in touch.

You can also [check the status of your submitted article](#) or find out [when your accepted article will be published](#).

© Copyright 2018 Elsevier | <https://www.elsevier.com>