



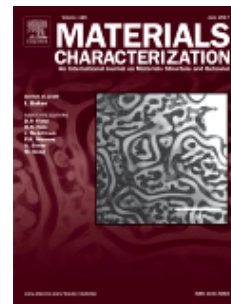
MATERIALS CHARACTERIZATION

An International Journal on Materials Structure and Behavior

AUTHOR INFORMATION PACK

TABLE OF CONTENTS

●	Description	p.1
●	Audience	p.1
●	Impact Factor	p.1
●	Abstracting and Indexing	p.2
●	Editorial Board	p.2
●	Guide for Authors	p.3



ISSN: 1044-5803

DESCRIPTION

Materials Characterization features original articles and state-of-the-art reviews on theoretical and practical aspects of the **structure** and **behaviour** of **materials**.

The Journal focuses on all characterization techniques, including all forms of microscopy (light, electron, acoustic, etc.,) and analysis (especially microanalysis and surface analytical techniques). Developments in both this wide range of techniques and their application to the quantification of the **microstructure** of materials are essential facets of the Journal.

The Journal provides the Materials Scientist/Engineer with up-to-date information on many types of materials with an underlying theme of explaining the behavior of materials using novel approaches. Materials covered by the journal include:

Metals & alloys Ceramics Nanomaterials Biomedical materials Optical materials Composites Natural Materials

Please note that not all topics fall within the scope of *Materials Characterization*. Submissions focused on the topics listed below will not be considered for publication, potential alternative journals are indicated in brackets:

thin film semiconductors ([Thin Solid Films](#); [Materials Science in Semiconductor Processing](#)) polymers or polymer composites ([Elsevier polymer titles](#); [Composites structures](#)) mechanical, electrical or other property measurements without any accompanying microstructural characterization (depending on the focus, please consider submitting to [Corrosion Science](#); [Wear](#); [Materials Science & Engineering B](#); [Materials & Design](#)) computation, theory or analysis papers without an accompanying microstructural characterization component ([Computational Materials Science](#); [Materials Science & Engineering A](#); [Materials Science & Engineering B](#); [Materials Science & Engineering C](#))

AUDIENCE

Materials scientists, metallurgists, microscopists, metallographers, mechanical engineers.

IMPACT FACTOR

2015: 2.383 © Thomson Reuters Journal Citation Reports 2016

ABSTRACTING AND INDEXING

ABI/Inform
Applied Mechanics Reviews
Chemical Abstracts
Current Contents
Metals Abstracts
Engineering Information Abstracts
INSPEC
Nuclear Science Abstracts
Referativnyi Zhurnal VINTI-RAN (Russian Academy of Sciences)
Science Citation Index
Scopus

EDITORIAL BOARD

Editor-in-Chief

I. Baker, Dartmouth College, Hanover, New Hampshire, USA

Associate Editors

David Field, Washington State University, Pullman, Washington, USA

Heung Nam Han, Seoul National University (SNU), Gwanag-Gu, Seoul, The Republic of Korea

Joanna McKittrick, University of California at San Diego (UCSD), San Diego, California, USA

Paul R. Munroe, UNSW Australia, Sydney, Australia

Aude Simar, Université Catholique de Louvain, Louvain-la-Neuve, Belgium

Min Song, Central South University, Hunan, China

Editorial Advisory Board

Bernard Bewlay, GE Global Research, Niskayuna, New York, USA

Harry Bhadeshia, University of Cambridge, Cambridge, UK

Krishan Chawla, University of Alabama at Birmingham, Birmingham, Alabama, USA

Nikhilesh Chawla, Arizona State University, Tempe, Arizona, USA

Ursula Gibson, Norwegian University of Science & Technology NTNU, Trondheim, Norway

Stephane Godet, Université Libre de Bruxelles (ULB), Brussels, Belgium

Chris Grovenor, University of Oxford, Oxford, UK

Beverly Inkson, University of Sheffield, Sheffield, England, UK

Douglas Ivey, University of Alberta, Edmonton, AB, Alberta, Canada

Jacob Jones, North Carolina State University, Raleigh, North Carolina, USA

Ingeborg Kaus, SINTEF, Trondheim, Norway

David Larson, Cameca Inc, Madison, Wisconsin, USA

David Lashmore, University of New Hampshire, Durham, New Hampshire, USA

Williams Lefebvre, Université de Rouen, Saint-Etienne-du-Rouvray, France

Yong Liu, Central South University, Changsha, Hunan, China

Eric Maire, INSA de Lyon, Villeurbanne, France

Knut Marthinsen, Norwegian University of Science & Technology NTNU, Trondheim, Norway

Joseph Michael, Sandia National Laboratories, Albuquerque, New Mexico, USA

Michael Moody, University of Oxford, Oxford, UK

Ian Nettleship, University of Pittsburgh, Pittsburgh, Pennsylvania, USA

Anthony Rollett, Carnegie Mellon University, Pittsburgh, Pennsylvania, USA

Sudhi Sant, Indian Institute of Technology, Kharagpur, India

Martin Saunders, University of Western Australia, Crawley, Australia

Dominique Schryvers, Universiteit Antwerpen, Antwerpen, Belgium

Douglas Van Citters, Dartmouth College, Hanover, New Hampshire, USA

Qi (Ben) Zeng, Carpenter Technology Corporation, Reading, USA

Zhongwu Zhang, Harbin Engineering University, Harbin, China

GUIDE FOR AUTHORS

Your Paper Your Way

We now differentiate between the requirements for new and revised submissions. You may choose to submit your manuscript as a single Word or PDF file to be used in the refereeing process. Only when your paper is at the revision stage, will you be requested to put your paper in to a 'correct format' for acceptance and provide the items required for the publication of your article.

To find out more, please visit the Preparation section below.

INTRODUCTION

Submission of papers

The entire submission and review process for *Materials Characterization* is now handled electronically, which shortens publication times. All papers should be submitted electronically on our submission page: <http://ees.elsevier.com/materialschar>.

Prior to submitting your paper, please follow the instructions on manuscript preparation given below. Please note that you must have an e-mail address to use the online submission system. Authors submit their article online by simply registering, logging-in, and submitting.

Detailed instructions on the use of the online submission system are available at <http://ees.elsevier.com/materialschar>. Please read the "Hints" for information on how to register, and review the "Tutorial for Authors" for a run-through of the submission process. For technical support during the submission process, please visit www.elsevier.com/submissionsupport.

The system automatically converts source files to a single Adobe Acrobat PDF version of the article, which is used in the peer-review process. Please note that even though manuscript source files are converted to PDF at submission for the review process, these source files are needed for further processing after acceptance. All correspondence, including notification of the Editor's decision and requests for revision, takes place by e-mail and via the Author's homepage, removing the need for a hard-copy paper trail.

PLEASE NOTE:

Figures should be a minimum of 300 dpi at journal size (75mm x 50mm for a one-column figure).

As a guide for acceptable figure files, refer to the [table](#).

Please note, if your figures do not meet quality standards your manuscript will not be sent forth for review.

Please click the following link for more detailed information: [Electronic Figure File Types](#).

Figure manipulation:

Whilst it is accepted that authors sometimes need to manipulate images for clarity, manipulation for purposes of deception or fraud will be seen as scientific ethical abuse and will be dealt with accordingly. For graphical images, this journal is applying the following policy: no specific feature within an image may be enhanced, obscured, moved, removed, or introduced. Adjustments of brightness, contrast, or color balance are acceptable if and as long as they do not obscure or eliminate any information present in the original. Nonlinear adjustments (e.g. changes to gamma settings) must be disclosed in the figure legend.

Types of contributions

Materials Characterization publishes both original full-length research articles and reviews (by invitation only). These are typically reviewed by two reviewers in addition to the Editor assigned to the paper. Video can also be submitted as part of the paper, see below for details.

Corresponding author: Clearly indicate who is willing to handle correspondence at all stages of refereeing and publication, also post-publication. **Ensure that telephone and fax numbers (with country and area code) are provided in addition to the e-mail address and the complete postal address.** Full postal addresses must be given for all co-authors. In addition to e-mail address, the country of origin should be clearly shown on the Title/Abstract page. Please consult a recent journal paper for style if possible.

Policy on ethics: It is required that all authors adhere to the journal's standards and policies concerning ethics. Please read our Ethics Statement prior to submitting to the journal. Submission of an article implies that the work described has not been published previously (except in the form of an abstract or as part of a published lecture or academic thesis), that it is not under consideration for publication elsewhere, that its publication is approved by all authors and that, if accepted, it will not be published elsewhere in the same form, in English or in any other language, without the written consent of the Publisher.

Additional questions or concerns regarding preparation of a manuscript may be addressed to the Editor-in-Chief.

Detailed instructions on manuscript preparation and artwork instructions can be found below. The editor reserves the right to return manuscripts that do not conform to the instructions for manuscript preparation and artwork instruction, as well as papers that do not fit the scope of the journal, prior to refereeing.

Your manuscript will be assigned to one of the journal editors who will communicate directly with you.

Materials Characterization Editor Contact:

Prof. Ian Baker, Editor-in-Chief
Thayer School of Engineering
Dartmouth College
8000 Cummings Hall
Hanover, NH 03755
USA
Tel: +1 603-646-2184
Email: materials.characterization@dartmouth.edu

Submission checklist

You can use this list to carry out a final check of your submission before you send it to the journal for review. Please check the relevant section in this Guide for Authors for more details.

Ensure that the following items are present:

One author has been designated as the corresponding author with contact details:

- E-mail address
- Full postal address

All necessary files have been uploaded:

Manuscript:

- Include keywords
- All figures (include relevant captions)
- All tables (including titles, description, footnotes)
- Ensure all figure and table citations in the text match the files provided
- Indicate clearly if color should be used for any figures in print

Graphical Abstracts / Highlights files (where applicable)

Supplemental files (where applicable)

Further considerations

- Manuscript has been 'spell checked' and 'grammar checked'
- All references mentioned in the Reference List are cited in the text, and vice versa
- Permission has been obtained for use of copyrighted material from other sources (including the Internet)
- Relevant declarations of interest have been made
- Journal policies detailed in this guide have been reviewed
- Referee suggestions and contact details provided, based on journal requirements

For further information, visit our [Support Center](#).

BEFORE YOU BEGIN

Ethics in publishing

Please see our information pages on [Ethics in publishing](#) and [Ethical guidelines for journal publication](#).

Declaration of interest

All authors must disclose any financial and personal relationships with other people or organizations that could inappropriately influence (bias) their work. Examples of potential conflicts of interest include employment, consultancies, stock ownership, honoraria, paid expert testimony, patent applications/registrations, and grants or other funding. If there are no conflicts of interest then please state this: 'Conflicts of interest: none'. [More information](#).

Submission declaration and verification

Submission of an article implies that the work described has not been published previously (except in the form of an abstract or as part of a published lecture or academic thesis or as an electronic preprint, see '[Multiple, redundant or concurrent publication](#)' section of our ethics policy for more information), that it is not under consideration for publication elsewhere, that its publication is approved by all authors and tacitly or explicitly by the responsible authorities where the work was carried out, and that, if accepted, it will not be published elsewhere in the same form, in English or in any other language, including electronically without the written consent of the copyright-holder. To verify originality, your article may be checked by the originality detection service [CrossCheck](#).

Contributors

Each author is required to declare his or her individual contribution to the article: all authors must have materially participated in the research and/or article preparation, so roles for all authors should be described. The statement that all authors have approved the final article should be true and included in the disclosure.

Changes to authorship

Authors are expected to consider carefully the list and order of authors **before** submitting their manuscript and provide the definitive list of authors at the time of the original submission. Any addition, deletion or rearrangement of author names in the authorship list should be made only **before** the manuscript has been accepted and only if approved by the journal Editor. To request such a change, the Editor must receive the following from the **corresponding author**: (a) the reason for the change in author list and (b) written confirmation (e-mail, letter) from all authors that they agree with the addition, removal or rearrangement. In the case of addition or removal of authors, this includes confirmation from the author being added or removed.

Only in exceptional circumstances will the Editor consider the addition, deletion or rearrangement of authors **after** the manuscript has been accepted. While the Editor considers the request, publication of the manuscript will be suspended. If the manuscript has already been published in an online issue, any requests approved by the Editor will result in a corrigendum.

Copyright

Upon acceptance of an article, authors will be asked to complete a 'Journal Publishing Agreement' (see [more information](#) on this). An e-mail will be sent to the corresponding author confirming receipt of the manuscript together with a 'Journal Publishing Agreement' form or a link to the online version of this agreement.

Subscribers may reproduce tables of contents or prepare lists of articles including abstracts for internal circulation within their institutions. [Permission](#) of the Publisher is required for resale or distribution outside the institution and for all other derivative works, including compilations and translations. If excerpts from other copyrighted works are included, the author(s) must obtain written permission from the copyright owners and credit the source(s) in the article. Elsevier has [preprinted forms](#) for use by authors in these cases.

For open access articles: Upon acceptance of an article, authors will be asked to complete an 'Exclusive License Agreement' ([more information](#)). Permitted third party reuse of open access articles is determined by the author's choice of [user license](#).

Author rights

As an author you (or your employer or institution) have certain rights to reuse your work. [More information](#).

Elsevier supports responsible sharing

Find out how you can [share your research](#) published in Elsevier journals.

Role of the funding source

You are requested to identify who provided financial support for the conduct of the research and/or preparation of the article and to briefly describe the role of the sponsor(s), if any, in study design; in the collection, analysis and interpretation of data; in the writing of the report; and in the decision to submit the article for publication. If the funding source(s) had no such involvement then this should be stated.

Funding body agreements and policies

Elsevier has established a number of agreements with funding bodies which allow authors to comply with their funder's open access policies. Some funding bodies will reimburse the author for the Open Access Publication Fee. Details of [existing agreements](#) are available online.

Open access

This journal offers authors a choice in publishing their research:

Open access

- Articles are freely available to both subscribers and the wider public with permitted reuse.
- An open access publication fee is payable by authors or on their behalf, e.g. by their research funder or institution.

Subscription

- Articles are made available to subscribers as well as developing countries and patient groups through our [universal access programs](#).
- No open access publication fee payable by authors.

Regardless of how you choose to publish your article, the journal will apply the same peer review criteria and acceptance standards.

For open access articles, permitted third party (re)use is defined by the following [Creative Commons user licenses](#):

Creative Commons Attribution (CC BY)

Lets others distribute and copy the article, create extracts, abstracts, and other revised versions, adaptations or derivative works of or from an article (such as a translation), include in a collective work (such as an anthology), text or data mine the article, even for commercial purposes, as long as they credit the author(s), do not represent the author as endorsing their adaptation of the article, and do not modify the article in such a way as to damage the author's honor or reputation.

Creative Commons Attribution-NonCommercial-NoDerivs (CC BY-NC-ND)

For non-commercial purposes, lets others distribute and copy the article, and to include in a collective work (such as an anthology), as long as they credit the author(s) and provided they do not alter or modify the article.

The open access publication fee for this journal is **USD 3500**, excluding taxes. Learn more about Elsevier's pricing policy: <https://www.elsevier.com/openaccesspricing>.

Green open access

Authors can share their research in a variety of different ways and Elsevier has a number of green open access options available. We recommend authors see our [green open access page](#) for further information. Authors can also self-archive their manuscripts immediately and enable public access from their institution's repository after an embargo period. This is the version that has been accepted for publication and which typically includes author-incorporated changes suggested during submission, peer review and in editor-author communications. Embargo period: For subscription articles, an appropriate amount of time is needed for journals to deliver value to subscribing customers before an article becomes freely available to the public. This is the embargo period and it begins from the date the article is formally published online in its final and fully citable form. [Find out more](#).

This journal has an embargo period of 24 months.

Elsevier Publishing Campus

The Elsevier Publishing Campus (www.publishingcampus.com) is an online platform offering free lectures, interactive training and professional advice to support you in publishing your research. The College of Skills training offers modules on how to prepare, write and structure your article and explains how editors will look at your paper when it is submitted for publication. Use these resources, and more, to ensure that your submission will be the best that you can make it.

Language (usage and editing services)

Please write your text in good English (American or British usage is accepted, but not a mixture of these). Authors who feel their English language manuscript may require editing to eliminate possible grammatical or spelling errors and to conform to correct scientific English may wish to use the [English Language Editing service](#) available from Elsevier's WebShop.

Submission

Our online submission system guides you stepwise through the process of entering your article details and uploading your files. The system converts your article files to a single PDF file used in the peer-review process. Editable files (e.g., Word, LaTeX) are required to typeset your article for final publication. All correspondence, including notification of the Editor's decision and requests for revision, is sent by e-mail.

Referees

Please submit, with the manuscript, the names, addresses and e-mail addresses of 4 potential referees. Note that the editor retains the sole right to decide whether or not the suggested reviewers are used.

Journal Policy

Returns without review

There are several common reasons for return without review

- 1.** Poor English. Authors are advised to have the paper read by someone who is a native English speaker or fluent in English.
- 2.** Lack of citations. It is usually insufficient to cite the Literature in the Introduction and then not to cite the relevant literature when discussing the results.
- 3.** Lack of analysis. Simply presenting results without any analysis is unlikely to be acceptable.
- 4.** Lack of units on graphs. It is not usually appropriate to label the ordinate axis on a graph as A.U. or arbitrary units. Presenting actual experimental values provides a reader with a sense of the noise and quality of the data. Multiple (offset) curves on the same graph can be accommodated by using a scale bar.
- 5.** Poorly presented micrographs. Micrographs that are poorly presented without scale bars or similar are not acceptable.
- 6.** Poor fit. Materials Characterization is a journal focused on *microstructural characterization*. Papers containing only electrical, optical or some other form of characterization without accompanying microstructural characterization will not be reviewed.
- 7.** Areas not generally supported by the journal. Materials Characterization does not publish papers on: thin film semiconductors; polymers or polymer composites; mechanical, electrical or other property measurements without any accompanying microstructural characterization; or theory or analysis papers without an accompanying microstructural characterization component.

PREPARATION

NEW SUBMISSIONS

Submission to this journal proceeds totally online and you will be guided stepwise through the creation and uploading of your files. The system automatically converts your files to a single PDF file, which is used in the peer-review process.

As part of the Your Paper Your Way service, you may choose to submit your manuscript as a single file to be used in the refereeing process. This can be a PDF file or a Word document, in any format or layout that can be used by referees to evaluate your manuscript. It should contain high enough quality figures for refereeing. If you prefer to do so, you may still provide all or some of the source files at the initial submission. Please note that individual figure files larger than 10 MB must be uploaded separately.

References

There are no strict requirements on reference formatting at submission. References can be in any style or format as long as the style is consistent. Where applicable, author(s) name(s), journal title/book title, chapter title/article title, year of publication, volume number/book chapter and the pagination must be present. Use of DOI is highly encouraged. The reference style used by the journal will be applied to the accepted article by Elsevier at the proof stage. Note that missing data will be highlighted at proof stage for the author to correct.

Formatting requirements

There are no strict formatting requirements but all manuscripts must contain the essential elements needed to convey your manuscript, for example Abstract, Keywords, Introduction, Materials and Methods, Results, Conclusions, Artwork and Tables with Captions.

If your article includes any Videos and/or other Supplementary material, this should be included in your initial submission for peer review purposes.

Divide the article into clearly defined sections.

Figures and tables embedded in text

Please ensure the figures and the tables included in the single file are placed next to the relevant text in the manuscript, rather than at the bottom or the top of the file. The corresponding caption should be placed directly below the figure or table.

Peer review

This journal operates a single blind review process. All contributions will be initially assessed by the editor for suitability for the journal. Papers deemed suitable are then typically sent to a minimum of one independent expert reviewer to assess the scientific quality of the paper. The Editor is responsible for the final decision regarding acceptance or rejection of articles. The Editor's decision is final. [More information on types of peer review.](#)

REVISED SUBMISSIONS

Use of word processing software

Regardless of the file format of the original submission, at revision you must provide us with an editable file of the entire article. Keep the layout of the text as simple as possible. Most formatting codes will be removed and replaced on processing the article. The electronic text should be prepared in a way very similar to that of conventional manuscripts (see also the [Guide to Publishing with Elsevier](#)). See also the section on Electronic artwork.

To avoid unnecessary errors you are strongly advised to use the 'spell-check' and 'grammar-check' functions of your word processor.

Article structure

Subdivision - numbered sections

Divide your article into clearly defined and numbered sections. Subsections should be numbered 1.1 (then 1.1.1, 1.1.2, ...), 1.2, etc. (the abstract is not included in section numbering). Use this numbering also for internal cross-referencing: do not just refer to 'the text'. Any subsection may be given a brief heading. Each heading should appear on its own separate line.

Introduction

State the objectives of the work and provide an adequate background, avoiding a detailed literature survey or a summary of the results.

Material and methods

Provide sufficient detail to allow the work to be reproduced. Methods already published should be indicated by a reference: only relevant modifications should be described.

Theory/calculation

A Theory section should extend, not repeat, the background to the article already dealt with in the Introduction and lay the foundation for further work. In contrast, a Calculation section represents a practical development from a theoretical basis.

Results

Results should be clear and concise.

Discussion

This should explore the significance of the results of the work, not repeat them. A combined Results and Discussion section is often appropriate.

Conclusions

The main conclusions of the study should be presented in a short Conclusions section.

Appendices

If there is more than one appendix, they should be identified as A, B, etc. Formulae and equations in appendices should be given separate numbering: Eq. (A.1), Eq. (A.2), etc.; in a subsequent appendix, Eq. (B.1) and so on. Similarly for tables and figures: Table A.1; Fig. A.1, etc.

Essential title page information

- **Title.** Concise and informative. Titles are often used in information-retrieval systems. Avoid abbreviations and formulae where possible.
- **Author names and affiliations.** Please clearly indicate the given name(s) and family name(s) of each author and check that all names are accurately spelled. Present the authors' affiliation addresses (where the actual work was done) below the names. Indicate all affiliations with a lower-case superscript letter immediately after the author's name and in front of the appropriate address. Provide the full postal address of each affiliation, including the country name and, if available, the e-mail address of each author.
- **Corresponding author.** Clearly indicate who will handle correspondence at all stages of refereeing and publication, also post-publication. **Ensure that the e-mail address is given and that contact details are kept up to date by the corresponding author.**
- **Present/permanent address.** If an author has moved since the work described in the article was done, or was visiting at the time, a 'Present address' (or 'Permanent address') may be indicated as a footnote to that author's name. The address at which the author actually did the work must be retained as the main, affiliation address. Superscript Arabic numerals are used for such footnotes.

Graphical abstract

Although a graphical abstract is optional, its use is encouraged as it draws more attention to the online article. The graphical abstract should summarize the contents of the article in a concise, pictorial form designed to capture the attention of a wide readership. Graphical abstracts should be submitted as a separate file in the online submission system. Image size: Please provide an image with a minimum of 531 × 1328 pixels (h × w) or proportionally more. The image should be readable at a size of 5 × 13 cm using a regular screen resolution of 96 dpi. Preferred file types: TIFF, EPS, PDF or MS Office files. You can view [Example Graphical Abstracts](#) on our information site.

Authors can make use of Elsevier's Illustration and Enhancement service to ensure the best presentation of their images and in accordance with all technical requirements: [Illustration Service](#).

Highlights

Highlights are mandatory for this journal. They consist of a short collection of bullet points that convey the core findings of the article and should be submitted in a separate editable file in the online submission system. Please use 'Highlights' in the file name and include 3 to 5 bullet points (maximum 85 characters, including spaces, per bullet point). You can view [example Highlights](#) on our information site.

Keywords

Immediately after the abstract, provide a maximum of 6 keywords, using American spelling and avoiding general and plural terms and multiple concepts (avoid, for example, 'and', 'of'). Be sparing with abbreviations: only abbreviations firmly established in the field may be eligible. These keywords will be used for indexing purposes.

Acknowledgements

Collate acknowledgements in a separate section at the end of the article before the references and do not, therefore, include them on the title page, as a footnote to the title or otherwise. List here those individuals who provided help during the research (e.g., providing language help, writing assistance or proof reading the article, etc.).

Formatting of funding sources

List funding sources in this standard way to facilitate compliance to funder's requirements:

Funding: This work was supported by the National Institutes of Health [grant numbers xxxx, yyyy]; the Bill & Melinda Gates Foundation, Seattle, WA [grant number zzzz]; and the United States Institutes of Peace [grant number aaaa].

It is not necessary to include detailed descriptions on the program or type of grants and awards. When funding is from a block grant or other resources available to a university, college, or other research institution, submit the name of the institute or organization that provided the funding.

If no funding has been provided for the research, please include the following sentence:

This research did not receive any specific grant from funding agencies in the public, commercial, or not-for-profit sectors.

Nomenclature and units

Follow internationally accepted rules and conventions: use the international system of units (SI). If other quantities are mentioned, give their equivalent in SI. You are urged to consult [IUPAC: Nomenclature of Organic Chemistry](#) for further information.

Math formulae

Please submit math equations as editable text and not as images. Present simple formulae in line with normal text where possible and use the solidus (/) instead of a horizontal line for small fractional terms, e.g., X/Y. In principle, variables are to be presented in italics. Powers of e are often more conveniently denoted by exp. Number consecutively any equations that have to be displayed separately from the text (if referred to explicitly in the text).

Footnotes

Footnotes should be used sparingly. Number them consecutively throughout the article. Many word processors build footnotes into the text, and this feature may be used. Should this not be the case, indicate the position of footnotes in the text and present the footnotes themselves separately at the end of the article.

Artwork

Electronic artwork

General points

- Make sure you use uniform lettering and sizing of your original artwork.
- Preferred fonts: Arial (or Helvetica), Times New Roman (or Times), Symbol, Courier.
- Number the illustrations according to their sequence in the text.
- Use a logical naming convention for your artwork files.
- Indicate per figure if it is a single, 1.5 or 2-column fitting image.
- For Word submissions only, you may still provide figures and their captions, and tables within a single file at the revision stage.
- Please note that individual figure files larger than 10 MB must be provided in separate source files. A detailed [guide on electronic artwork](#) is available.

You are urged to visit this site; some excerpts from the detailed information are given here.

Formats

Regardless of the application used, when your electronic artwork is finalized, please 'save as' or convert the images to one of the following formats (note the resolution requirements for line drawings, halftones, and line/halftone combinations given below):

EPS (or PDF): Vector drawings. Embed the font or save the text as 'graphics'.

TIFF (or JPG): Color or grayscale photographs (halftones): always use a minimum of 300 dpi.

TIFF (or JPG): Bitmapped line drawings: use a minimum of 1000 dpi.

TIFF (or JPG): Combinations bitmapped line/half-tone (color or grayscale): a minimum of 500 dpi is required.

Please do not:

- Supply files that are optimized for screen use (e.g., GIF, BMP, PICT, WPG); the resolution is too low.
- Supply files that are too low in resolution.
- Submit graphics that are disproportionately large for the content.

Color artwork

Please make sure that artwork files are in an acceptable format (TIFF (or JPEG), EPS (or PDF), or MS Office files) and with the correct resolution. If, together with your accepted article, you submit usable color figures then Elsevier will ensure, at no additional charge, that these figures will appear in color online (e.g., ScienceDirect and other sites) regardless of whether or not these illustrations are reproduced in color in the printed version. **For color reproduction in print, you will receive information regarding the costs from Elsevier after receipt of your accepted article.** Please indicate your preference for color: in print or online only. [Further information on the preparation of electronic artwork.](#)

Figure captions

Ensure that each illustration has a caption. A caption should comprise a brief title (**not** on the figure itself) and a description of the illustration. Keep text in the illustrations themselves to a minimum but explain all symbols and abbreviations used.

Tables

Please submit tables as editable text and not as images. Tables can be placed either next to the relevant text in the article, or on separate page(s) at the end. Number tables consecutively in accordance with their appearance in the text and place any table notes below the table body. Be sparing in the use of tables and ensure that the data presented in them do not duplicate results described elsewhere in the article. Please avoid using vertical rules and shading in table cells.

References

Citation in text

Please ensure that every reference cited in the text is also present in the reference list (and vice versa). Any references cited in the abstract must be given in full. Unpublished results and personal communications are not recommended in the reference list, but may be mentioned in the text. If these references are included in the reference list they should follow the standard reference style of the journal and should include a substitution of the publication date with either 'Unpublished results' or 'Personal communication'. Citation of a reference as 'in press' implies that the item has been accepted for publication.

Reference links

Increased discoverability of research and high quality peer review are ensured by online links to the sources cited. In order to allow us to create links to abstracting and indexing services, such as Scopus, CrossRef and PubMed, please ensure that data provided in the references are correct. Please note that incorrect surnames, journal/book titles, publication year and pagination may prevent link creation. When copying references, please be careful as they may already contain errors. Use of the DOI is encouraged.

A DOI can be used to cite and link to electronic articles where an article is in-press and full citation details are not yet known, but the article is available online. A DOI is guaranteed never to change, so you can use it as a permanent link to any electronic article. An example of a citation using DOI for an article not yet in an issue is: VanDecar J.C., Russo R.M., James D.E., Ambeh W.B., Franke M. (2003). Aseismic continuation of the Lesser Antilles slab beneath northeastern Venezuela. *Journal of Geophysical Research*, <https://doi.org/10.1029/2001JB000884>. Please note the format of such citations should be in the same style as all other references in the paper.

Web references

As a minimum, the full URL should be given and the date when the reference was last accessed. Any further information, if known (DOI, author names, dates, reference to a source publication, etc.), should also be given. Web references can be listed separately (e.g., after the reference list) under a different heading if desired, or can be included in the reference list.

Data references

This journal encourages you to cite underlying or relevant datasets in your manuscript by citing them in your text and including a data reference in your Reference List. Data references should include the following elements: author name(s), dataset title, data repository, version (where available), year, and global persistent identifier. Add [dataset] immediately before the reference so we can properly identify it as a data reference. The [dataset] identifier will not appear in your published article.

References in a special issue

Please ensure that the words 'this issue' are added to any references in the list (and any citations in the text) to other articles in the same Special Issue.

Reference management software

Most Elsevier journals have their reference template available in many of the most popular reference management software products. These include all products that support [Citation Style Language styles](#), such as [Mendeley](#) and [Zotero](#), as well as [EndNote](#). Using the word processor plug-ins from these products, authors only need to select the appropriate journal template when preparing their article, after which citations and bibliographies will be automatically formatted in the journal's style. If no template is yet available for this journal, please follow the format of the sample references and citations as shown in this Guide.

Users of Mendeley Desktop can easily install the reference style for this journal by clicking the following link:

<http://open.mendeley.com/use-citation-style/materials-characterization>

When preparing your manuscript, you will then be able to select this style using the Mendeley plugins for Microsoft Word or LibreOffice.

Reference formatting

There are no strict requirements on reference formatting at submission. References can be in any style or format as long as the style is consistent. Where applicable, author(s) name(s), journal title/book title, chapter title/article title, year of publication, volume number/book chapter and the pagination must be present. Use of DOI is highly encouraged. The reference style used by the journal will be applied to the accepted article by Elsevier at the proof stage. Note that missing data will be highlighted at proof stage for the author to correct. If you do wish to format the references yourself they should be arranged according to the following examples:

Reference style

Text: Indicate references by number(s) in square brackets in line with the text. The actual authors can be referred to, but the reference number(s) must always be given.

Example: '..... as demonstrated [3,6]. Barnaby and Jones [8] obtained a different result'

List: Number the references (numbers in square brackets) in the list in the order in which they appear in the text.

Examples:

Reference to a journal publication:

[1] J. van der Geer, J.A.J. Hanraads, R.A. Lupton, The art of writing a scientific article, *J. Sci. Commun.* 163 (2010) 51–59.

Reference to a book:

[2] W. Strunk Jr., E.B. White, *The Elements of Style*, fourth ed., Longman, New York, 2000.

Reference to a chapter in an edited book:

[3] G.R. Mettam, L.B. Adams, How to prepare an electronic version of your article, in: B.S. Jones, R.Z. Smith (Eds.), *Introduction to the Electronic Age*, E-Publishing Inc., New York, 2009, pp. 281–304.

Reference to a website:

[4] Cancer Research UK, Cancer statistics reports for the UK. <http://www.cancerresearchuk.org/aboutcancer/statistics/cancerstatsreport/>, 2003 (accessed 13.03.03).

Reference to a dataset:

[dataset] [5] M. Oguro, S. Imahiro, S. Saito, T. Nakashizuka, Mortality data for Japanese oak wilt disease and surrounding forest compositions, *Mendeley Data*, v1, 2015. <https://doi.org/10.17632/xwj98nb39r.1>.

Journal abbreviations source

Journal names should be abbreviated according to the [List of Title Word Abbreviations](#).

Video

Elsevier accepts video material and animation sequences to support and enhance your scientific research. Authors who have video or animation files that they wish to submit with their article are strongly encouraged to include links to these within the body of the article. This can be done in the same way as a figure or table by referring to the video or animation content and noting in the body text where it should be placed. All submitted files should be properly labeled so that they directly relate to the video file's content. In order to ensure that your video or animation material is directly usable, please provide the files in one of our recommended file formats with a preferred maximum size of 150 MB. Video and animation files supplied will be published online in the electronic version of your article in Elsevier Web products, including [ScienceDirect](#). Please supply 'stills' with your files: you can choose any frame from the video or animation or make a separate image. These will be used instead of standard icons and will personalize the link to your video data. For more detailed instructions please visit our [video instruction pages](#). Note: since video and animation cannot be embedded in the print version of the journal, please provide text for both the electronic and the print version for the portions of the article that refer to this content.

Supplementary material

Supplementary material such as applications, images and sound clips, can be published with your article to enhance it. Submitted supplementary items are published exactly as they are received (Excel or PowerPoint files will appear as such online). Please submit your material together with the article and supply a concise, descriptive caption for each supplementary file. If you wish to make changes to

supplementary material during any stage of the process, please make sure to provide an updated file. Do not annotate any corrections on a previous version. Please switch off the 'Track Changes' option in Microsoft Office files as these will appear in the published version.

RESEARCH DATA

This journal encourages and enables you to share data that supports your research publication where appropriate, and enables you to interlink the data with your published articles. Research data refers to the results of observations or experimentation that validate research findings. To facilitate reproducibility and data reuse, this journal also encourages you to share your software, code, models, algorithms, protocols, methods and other useful materials related to the project.

Below are a number of ways in which you can associate data with your article or make a statement about the availability of your data when submitting your manuscript. If you are sharing data in one of these ways, you are encouraged to cite the data in your manuscript and reference list. Please refer to the "References" section for more information about data citation. For more information on depositing, sharing and using research data and other relevant research materials, visit the [research data](#) page.

Data linking

If you have made your research data available in a data repository, you can link your article directly to the dataset. Elsevier collaborates with a number of repositories to link articles on ScienceDirect with relevant repositories, giving readers access to underlying data that give them a better understanding of the research described.

There are different ways to link your datasets to your article. When available, you can directly link your dataset to your article by providing the relevant information in the submission system. For more information, visit the [database linking page](#).

For [supported data repositories](#) a repository banner will automatically appear next to your published article on ScienceDirect.

In addition, you can link to relevant data or entities through identifiers within the text of your manuscript, using the following format: Database: xxxx (e.g., TAIR: AT1G01020; CCDC: 734053; PDB: 1XFN).

Mendeley data

This journal supports Mendeley Data, enabling you to deposit any research data (including raw and processed data, video, code, software, algorithms, protocols, and methods) associated with your manuscript in a free-to-use, open access repository. During the submission process, after uploading your manuscript, you will have the opportunity to upload your relevant datasets directly to *Mendeley Data*. The datasets will be listed and directly accessible to readers next to your published article online.

For more information, visit the [Mendeley Data for journals page](#).

Data in Brief

You have the option of converting any or all parts of your supplementary or additional raw data into one or multiple data articles, a new kind of article that houses and describes your data. Data articles ensure that your data is actively reviewed, curated, formatted, indexed, given a DOI and publicly available to all upon publication. You are encouraged to submit your article for *Data in Brief* as an additional item directly alongside the revised version of your manuscript. If your research article is accepted, your data article will automatically be transferred over to *Data in Brief* where it will be editorially reviewed and published in the open access data journal, *Data in Brief*. Please note an open access fee is payable for publication in *Data in Brief*. Full details can be found on the [Data in Brief website](#). Please use [this template](#) to write your Data in Brief.

Transparency

To foster transparency, we encourage you to state the availability of your data in your submission. If your data is unavailable to access or unsuitable to post, this gives you the opportunity to indicate why. If you submit [this form](#) with your manuscript as a supplementary file, the statement will appear next to your published article on ScienceDirect.

ARTICLE ENRICHMENTS

AudioSlides

The journal encourages authors to create an AudioSlides presentation with their published article. AudioSlides are brief, webinar-style presentations that are shown next to the online article on ScienceDirect. This gives authors the opportunity to summarize their research in their own words and to help readers understand what the paper is about. [More information and examples are available](#). Authors of this journal will automatically receive an invitation e-mail to create an AudioSlides presentation after acceptance of their paper.

Interactive MATLAB Figure Viewer

This journal features the Interactive MATLAB Figure Viewer, allowing you to display figures created in MATLAB in the .FIG format in an interactive viewer next to the article. [More information and submission instructions](#).

Interactive plots

This journal enables you to show an Interactive Plot with your article by simply submitting a data file. [Full instructions](#).

AFTER ACCEPTANCE

Online proof correction

Corresponding authors will receive an e-mail with a link to our online proofing system, allowing annotation and correction of proofs online. The environment is similar to MS Word: in addition to editing text, you can also comment on figures/tables and answer questions from the Copy Editor. Web-based proofing provides a faster and less error-prone process by allowing you to directly type your corrections, eliminating the potential introduction of errors.

If preferred, you can still choose to annotate and upload your edits on the PDF version. All instructions for proofing will be given in the e-mail we send to authors, including alternative methods to the online version and PDF.

We will do everything possible to get your article published quickly and accurately. Please use this proof only for checking the typesetting, editing, completeness and correctness of the text, tables and figures. Significant changes to the article as accepted for publication will only be considered at this stage with permission from the Editor. It is important to ensure that all corrections are sent back to us in one communication. Please check carefully before replying, as inclusion of any subsequent corrections cannot be guaranteed. Proofreading is solely your responsibility.

Offprints

The corresponding author will, at no cost, receive a customized [Share Link](#) providing 50 days free access to the final published version of the article on [ScienceDirect](#). The Share Link can be used for sharing the article via any communication channel, including email and social media. For an extra charge, paper offprints can be ordered via the offprint order form which is sent once the article is accepted for publication. Both corresponding and co-authors may order offprints at any time via Elsevier's [Webshop](#). Corresponding authors who have published their article open access do not receive a Share Link as their final published version of the article is available open access on ScienceDirect and can be shared through the article DOI link.

AUTHOR INQUIRIES

Visit the [Elsevier Support Center](#) to find the answers you need. Here you will find everything from Frequently Asked Questions to ways to get in touch.

You can also [check the status of your submitted article](#) or find out [when your accepted article will be published](#).

© Copyright 2014 Elsevier | <http://www.elsevier.com>