

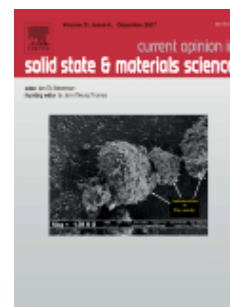


CURRENT OPINION IN SOLID STATE & MATERIALS SCIENCE

AUTHOR INFORMATION PACK

TABLE OF CONTENTS

●	Description	p.1
●	Audience	p.1
●	Impact Factor	p.1
●	Abstracting and Indexing	p.2
●	Editorial Board	p.2
●	Guide for Authors	p.3



ISSN: 1359-0286

DESCRIPTION

Current Opinion in Solid State & Materials Science aims to provide a snapshot of the latest research and advances in **materials science**. Every year, in six issues, *Current Opinion in Solid State & Materials Science* publishes a series of reviews covering the most exciting and developing areas of **materials science**. Each issue contains 2-3 sections of reviews commissioned by international researchers who are experts in their fields. The result is a journal that gives the materials scientist the opportunity to keep informed of all the current developments in their own, and related, areas of research, ensuring the cross-fertilization of ideas across an increasingly interdisciplinary field.

Topics covered regularly include: Electronic Materials, Solid Catalysts and Porous Solids, Synthesis and Reactivity of Solids, Optical and Magnetic Materials, Metals and Alloys, Biomaterials, Characterization Techniques, Amorphous Materials, Molecular Crystals, Surface Science, Ceramics, Composites and Intergrowths, Modelling and Simulation of Solids, Polymers. Special issues containing 'one-off' sections on other important areas will also appear.

Benefits to authors

We also provide many author benefits, such as free PDFs, a liberal copyright policy, special discounts on Elsevier publications and much more. Please click here for more information on our [author services](#).

Please see our [Guide for Authors](#) for information on article submission. If you require any further information or help, please visit our [Support Center](#)

AUDIENCE

Scientists, researchers and professionals interested in materials research and the interdisciplinary subjects relating to it.

IMPACT FACTOR

2016: 6.938 © Thomson Reuters Journal Citation Reports 2017

ABSTRACTING AND INDEXING

Aluminium Industry Abstracts
METADEX
Engineered Materials Abstracts
FLUIDEX
INSPEC
SCISEARCH
Scopus

EDITORIAL BOARD

Editor-in-Chief

I. Robertson, College of Engineering, University of Wisconsin-Madison, 1415 Engineering Drive, Madison, Wisconsin, WI 53706, USA

Associate Editors

P.V. Braun, Dept. of Materials Science and Engineering, University of Illinois at Urbana-Champaign, Urbana, USA

I. Szlufarska, Dept. of Mats Sci & Eng, University of Wisconsin at Madison, Madison, Wisconsin, USA

Founding Editor

J.M. Thomas, University of Cambridge, Cambridge, UK

Editorial Board

James Coleman, University of Texas at Dallas, USA

George Crabtree, Argonne National Laboratory, Argonne, Illinois, USA

V. Crespi, Penn State University, Pennsylvania, USA

Juan De Pablo, University of Wisconsin at Madison, Madison, Wisconsin, USA

Vinayak Dravid, Northwestern University, Evanston, Illinois, USA

Andrew Gewirth, University of Illinois at Urbana-Champaign, Urbana, Illinois, USA

Sharon Glotzer, University of Michigan, Ann Arbor, Michigan, USA

S. Granick, IBS Center for Soft and Living Matter, South Korea

J. Grossman, Massachusetts Institute of Technology, Massachusetts, USA

Craig Hawker, University of California at Santa Barbara, Santa Barbara, California, USA

Yonggang Huang, Northwestern University, Evanston, Illinois, USA

Craig Jensen, University of Hawaii at Mānoa, Honolulu, Hawaii, USA

Dorte Juul Jensen, Risø National Laboratory - Technical University of Denmark (DTU), Roskilde, Denmark

K.S. Jones, University of Florida, Gainesville, Florida, USA

Richard Le Sar, Iowa State University, Ames, Iowa, USA

David McComb, Director, CEMAS, Ohio State University, Columbus, Ohio, USA

Paul Midgley, University of Cambridge, Cambridge, UK

Michael Miller, Oak Ridge National Laboratory, Enka, North Carolina, USA

Serdar Ogut, University of Illinois at Chicago, Chicago, Illinois, USA

Monica Olvera de la Cruz, Northwestern University, Evanston, Illinois, USA

Simon Phillpot, University of Florida, Gainesville, Florida, USA

Elsa Reichmanis, Georgia Tech

A. Rockett, Colorado School of Mines, Golden, Colorado, USA

Susan Sinnott, Pennsylvania State University, University Park, Pennsylvania, USA

F. Stellaci, École Polytechnique Fédérale de Lausanne (EPFL), Switzerland

Craig Taylor, Colorado School of Mines, Golden, Colorado, USA

E. Wachsman, University of Maryland, Baltimore, Maryland, USA

Brian Wirth, University of Tennessee, Knoxville, Tennessee, USA

Steve Zinkle, Oak Ridge National Laboratory, Enka, North Carolina, USA

GUIDE FOR AUTHORS

Your Paper Your Way

We now differentiate between the requirements for new and revised submissions. You may choose to submit your manuscript as a single Word or PDF file to be used in the refereeing process. Only when your paper is at the revision stage, will you be requested to put your paper in to a 'correct format' for acceptance and provide the items required for the publication of your article.

To find out more, please visit the Preparation section below.

INTRODUCTION

Current Opinion in Solid State & Materials Science aims to provide a snapshot of the latest research and advances in materials science. Every year, in six issues, *Current Opinion in Solid State & Materials Science* publishes a series of reviews covering the most exciting and developing areas of materials science. Each issue contains review sections commissioned by international researchers who are experts in their fields. The result is a journal that gives the materials scientist the opportunity to keep informed of all the current developments in their own, and related, areas of research, ensuring the cross-fertilization of ideas across an increasingly interdisciplinary field.

Topics covered regularly include: Electronic Materials, Solid Catalysts and Porous Solids, Synthesis and Reactivity of Solids, Optical and Magnetic Materials, Metals and Alloys, Biomaterials, Characterization Techniques, Amorphous Materials, Molecular Crystals, Surface Science, Ceramics, Composites and Intergrowths, Modelling and Simulation of Solids, Polymers. Special issues containing 'one-off' sections on other important areas will also appear.

Submission checklist

You can use this list to carry out a final check of your submission before you send it to the journal for review. Please check the relevant section in this Guide for Authors for more details.

Ensure that the following items are present:

One author has been designated as the corresponding author with contact details:

- E-mail address
- Full postal address

All necessary files have been uploaded:

Manuscript:

- Include keywords
- All figures (include relevant captions)
- All tables (including titles, description, footnotes)
- Ensure all figure and table citations in the text match the files provided
- Indicate clearly if color should be used for any figures in print

Graphical Abstracts / Highlights files (where applicable)

Supplemental files (where applicable)

Further considerations

- Manuscript has been 'spell checked' and 'grammar checked'
- All references mentioned in the Reference List are cited in the text, and vice versa
- Permission has been obtained for use of copyrighted material from other sources (including the Internet)
- A competing interests statement is provided, even if the authors have no competing interests to declare
- Journal policies detailed in this guide have been reviewed
- Referee suggestions and contact details provided, based on journal requirements

For further information, visit our [Support Center](#).

BEFORE YOU BEGIN

Ethics in publishing

Please see our information pages on [Ethics in publishing](#) and [Ethical guidelines for journal publication](#).

Declaration of interest

All authors must disclose any financial and personal relationships with other people or organizations that could inappropriately influence (bias) their work. Examples of potential conflicts of interest include employment, consultancies, stock ownership, honoraria, paid expert testimony, patent applications/registrations, and grants or other funding. Authors must disclose any interests in two places: 1. A summary declaration of interest statement in the title page file (if double-blind) or the manuscript file (if single-blind). If there are no interests to declare then please state this: 'Declarations of interest: none'. This summary statement will be ultimately published if the article is accepted. 2. Detailed disclosures as part of a separate Declaration of Interest form, which forms part of the journal's official records. It is important for potential interests to be declared in both places and that the information matches. [More information.](#)

Submission declaration and verification

Submission of an article implies that the work described has not been published previously (except in the form of an abstract or as part of a published lecture or academic thesis or as an electronic preprint, see '[Multiple, redundant or concurrent publication](#)' section of our ethics policy for more information), that it is not under consideration for publication elsewhere, that its publication is approved by all authors and tacitly or explicitly by the responsible authorities where the work was carried out, and that, if accepted, it will not be published elsewhere in the same form, in English or in any other language, including electronically without the written consent of the copyright-holder. To verify originality, your article may be checked by the originality detection service [CrossCheck](#).

Contributors

Each author is required to declare his or her individual contribution to the article: all authors must have materially participated in the research and/or article preparation, so roles for all authors should be described. The statement that all authors have approved the final article should be true and included in the disclosure.

Changes to authorship

Authors are expected to consider carefully the list and order of authors **before** submitting their manuscript and provide the definitive list of authors at the time of the original submission. Any addition, deletion or rearrangement of author names in the authorship list should be made only **before** the manuscript has been accepted and only if approved by the journal Editor. To request such a change, the Editor must receive the following from the **corresponding author**: (a) the reason for the change in author list and (b) written confirmation (e-mail, letter) from all authors that they agree with the addition, removal or rearrangement. In the case of addition or removal of authors, this includes confirmation from the author being added or removed.

Only in exceptional circumstances will the Editor consider the addition, deletion or rearrangement of authors **after** the manuscript has been accepted. While the Editor considers the request, publication of the manuscript will be suspended. If the manuscript has already been published in an online issue, any requests approved by the Editor will result in a corrigendum.

Copyright

Upon acceptance of an article, authors will be asked to complete a 'Journal Publishing Agreement' (see [more information](#) on this). An e-mail will be sent to the corresponding author confirming receipt of the manuscript together with a 'Journal Publishing Agreement' form or a link to the online version of this agreement.

Subscribers may reproduce tables of contents or prepare lists of articles including abstracts for internal circulation within their institutions. [Permission](#) of the Publisher is required for resale or distribution outside the institution and for all other derivative works, including compilations and translations. If excerpts from other copyrighted works are included, the author(s) must obtain written permission from the copyright owners and credit the source(s) in the article. Elsevier has [preprinted forms](#) for use by authors in these cases.

For open access articles: Upon acceptance of an article, authors will be asked to complete an 'Exclusive License Agreement' ([more information](#)). Permitted third party reuse of open access articles is determined by the author's choice of [user license](#).

Author rights

As an author you (or your employer or institution) have certain rights to reuse your work. [More information.](#)

Elsevier supports responsible sharing

Find out how you can [share your research](#) published in Elsevier journals.

Role of the funding source

You are requested to identify who provided financial support for the conduct of the research and/or preparation of the article and to briefly describe the role of the sponsor(s), if any, in study design; in the collection, analysis and interpretation of data; in the writing of the report; and in the decision to submit the article for publication. If the funding source(s) had no such involvement then this should be stated.

Funding body agreements and policies

Elsevier has established a number of agreements with funding bodies which allow authors to comply with their funder's open access policies. Some funding bodies will reimburse the author for the Open Access Publication Fee. Details of [existing agreements](#) are available online.

Open access

This journal offers authors a choice in publishing their research:

Subscription

- Articles are made available to subscribers as well as developing countries and patient groups through our [universal access programs](#).
- No open access publication fee payable by authors.

Open access

- Articles are freely available to both subscribers and the wider public with permitted reuse.
- An open access publication fee is payable by authors or on their behalf, e.g. by their research funder or institution.

Regardless of how you choose to publish your article, the journal will apply the same peer review criteria and acceptance standards.

For open access articles, permitted third party (re)use is defined by the following [Creative Commons user licenses](#):

Creative Commons Attribution (CC BY)

Lets others distribute and copy the article, create extracts, abstracts, and other revised versions, adaptations or derivative works of or from an article (such as a translation), include in a collective work (such as an anthology), text or data mine the article, even for commercial purposes, as long as they credit the author(s), do not represent the author as endorsing their adaptation of the article, and do not modify the article in such a way as to damage the author's honor or reputation.

Creative Commons Attribution-NonCommercial-NoDerivs (CC BY-NC-ND)

For non-commercial purposes, lets others distribute and copy the article, and to include in a collective work (such as an anthology), as long as they credit the author(s) and provided they do not alter or modify the article.

The open access publication fee for this journal is **USD 3750**, excluding taxes. Learn more about Elsevier's pricing policy: <http://www.elsevier.com/openaccesspricing>.

Green open access

Authors can share their research in a variety of different ways and Elsevier has a number of green open access options available. We recommend authors see our [green open access page](#) for further information. Authors can also self-archive their manuscripts immediately and enable public access from their institution's repository after an embargo period. This is the version that has been accepted for publication and which typically includes author-incorporated changes suggested during submission, peer review and in editor-author communications. Embargo period: For subscription articles, an appropriate amount of time is needed for journals to deliver value to subscribing customers before an article becomes freely available to the public. This is the embargo period and it begins from the date the article is formally published online in its final and fully citable form. [Find out more](#).

This journal has an embargo period of 24 months.

Elsevier Publishing Campus

The Elsevier Publishing Campus (www.publishingcampus.com) is an online platform offering free lectures, interactive training and professional advice to support you in publishing your research. The College of Skills training offers modules on how to prepare, write and structure your article and explains how editors will look at your paper when it is submitted for publication. Use these resources, and more, to ensure that your submission will be the best that you can make it.

Language (usage and editing services)

Please write your text in good English (American or British usage is accepted, but not a mixture of these). Authors who feel their English language manuscript may require editing to eliminate possible grammatical or spelling errors and to conform to correct scientific English may wish to use the [English Language Editing service](#) available from Elsevier's WebShop.

Submission

Our online submission system guides you stepwise through the process of entering your article details and uploading your files. The system converts your article files to a single PDF file used in the peer-review process. Editable files (e.g., Word, LaTeX) are required to typeset your article for final publication. All correspondence, including notification of the Editor's decision and requests for revision, is sent by e-mail.

Referees

Please submit, with the manuscript, the names and addresses of 6 potential referees. Note that the editor retains the sole right to decide whether or not the suggested reviewers are used.

PREPARATION

NEW SUBMISSIONS

Submission to this journal proceeds totally online and you will be guided stepwise through the creation and uploading of your files. The system automatically converts your files to a single PDF file, which is used in the peer-review process.

As part of the Your Paper Your Way service, you may choose to submit your manuscript as a single file to be used in the refereeing process. This can be a PDF file or a Word document, in any format or layout that can be used by referees to evaluate your manuscript. It should contain high enough quality figures for refereeing. If you prefer to do so, you may still provide all or some of the source files at the initial submission. Please note that individual figure files larger than 10 MB must be uploaded separately.

References

There are no strict requirements on reference formatting at submission. References can be in any style or format as long as the style is consistent. Where applicable, author(s) name(s), journal title/book title, chapter title/article title, year of publication, volume number/book chapter and the pagination must be present. Use of DOI is highly encouraged. The reference style used by the journal will be applied to the accepted article by Elsevier at the proof stage. Note that missing data will be highlighted at proof stage for the author to correct.

Formatting requirements

There are no strict formatting requirements but all manuscripts must contain the essential elements needed to convey your manuscript, for example Abstract, Keywords, Introduction, Materials and Methods, Results, Conclusions, Artwork and Tables with Captions.

If your article includes any Videos and/or other Supplementary material, this should be included in your initial submission for peer review purposes.

Divide the article into clearly defined sections.

Figures and tables embedded in text

Please ensure the figures and the tables included in the single file are placed next to the relevant text in the manuscript, rather than at the bottom or the top of the file. The corresponding caption should be placed directly below the figure or table.

Peer review

This journal operates a single blind review process. All contributions will be initially assessed by the editor for suitability for the journal. Papers deemed suitable are then typically sent to a minimum of two independent expert reviewers to assess the scientific quality of the paper. The Editor is responsible for the final decision regarding acceptance or rejection of articles. The Editor's decision is final. [More information on types of peer review.](#)

REVISED SUBMISSIONS

Language

Please prepare your text using proper English (American or British usage is accepted, but not a mixture of these). Use decimal points (not decimal commas); use a space for thousands (10 000 and above).

Use of word processing software

Regardless of the file format of the original submission, at revision you must provide us with an editable file of the entire article. Keep the layout of the text as simple as possible. Most formatting codes will be removed and replaced on processing the article. The electronic text should be prepared in a way very similar to that of conventional manuscripts (see also the [Guide to Publishing with Elsevier](#)). See also the section on Electronic artwork.

To avoid unnecessary errors you are strongly advised to use the 'spell-check' and 'grammar-check' functions of your word processor.

LaTeX

You are recommended to use the Elsevier article class [elsarticle.cls](#) to prepare your manuscript and [BibTeX](#) to generate your bibliography.

Our [LaTeX site](#) has detailed submission instructions, templates and other information.

Article structure

Subdivision - numbered sections

Divide your article into clearly defined and numbered sections. Subsections should be numbered 1.1 (then 1.1.1, 1.1.2, ...), 1.2, etc. (the abstract is not included in section numbering). Use this numbering also for internal cross-referencing: do not just refer to 'the text'. Any subsection may be given a brief heading. Each heading should appear on its own separate line.

Introduction

State the objectives of the work and provide an adequate background, avoiding a detailed literature survey or a summary of the results.

Material and methods

Provide sufficient details to allow the work to be reproduced by an independent researcher. Methods that are already published should be summarized, and indicated by a reference. If quoting directly from a previously published method, use quotation marks and also cite the source. Any modifications to existing methods should also be described.

Theory/calculation

A Theory section should extend, not repeat, the background to the article already dealt with in the Introduction and lay the foundation for further work. In contrast, a Calculation section represents a practical development from a theoretical basis.

Results

Results should be clear and concise.

Discussion

This should explore the significance of the results of the work, not repeat them. A combined Results and Discussion section is often appropriate. Avoid extensive citations and discussion of published literature.

Conclusions

The main conclusions of the study may be presented in a short Conclusions section, which may stand alone or form a subsection of a Discussion or Results and Discussion section.

Appendices

If there is more than one appendix, they should be identified as A, B, etc. Formulae and equations in appendices should be given separate numbering: Eq. (A.1), Eq. (A.2), etc.; in a subsequent appendix, Eq. (B.1) and so on. Similarly for tables and figures: Table A.1; Fig. A.1, etc.

Essential title page information

- **Title.** Concise and informative. Titles are often used in information-retrieval systems. Avoid abbreviations and formulae where possible.
- **Author names and affiliations.** Please clearly indicate the given name(s) and family name(s) of each author and check that all names are accurately spelled. You can add your name between parentheses in your own script behind the English transliteration. Present the authors' affiliation addresses (where the actual work was done) below the names. Indicate all affiliations with a lower-

case superscript letter immediately after the author's name and in front of the appropriate address. Provide the full postal address of each affiliation, including the country name and, if available, the e-mail address of each author.

- **Corresponding author.** Clearly indicate who will handle correspondence at all stages of refereeing and publication, also post-publication. This responsibility includes answering any future queries about Methodology and Materials. **Ensure that the e-mail address is given and that contact details are kept up to date by the corresponding author.**

- **Present/permanent address.** If an author has moved since the work described in the article was done, or was visiting at the time, a 'Present address' (or 'Permanent address') may be indicated as a footnote to that author's name. The address at which the author actually did the work must be retained as the main, affiliation address. Superscript Arabic numerals are used for such footnotes.

Abstract

A concise and factual abstract is required. The abstract should state briefly the purpose of the research, the principal results and major conclusions. An abstract is often presented separately from the article, so it must be able to stand alone. For this reason, References should be avoided, but if essential, then cite the author(s) and year(s). Also, non-standard or uncommon abbreviations should be avoided, but if essential they must be defined at their first mention in the abstract itself.

Graphical abstract

Although a graphical abstract is optional, its use is encouraged as it draws more attention to the online article. The graphical abstract should summarize the contents of the article in a concise, pictorial form designed to capture the attention of a wide readership. Graphical abstracts should be submitted as a separate file in the online submission system. Image size: Please provide an image with a minimum of 531 × 1328 pixels (h × w) or proportionally more. The image should be readable at a size of 5 × 13 cm using a regular screen resolution of 96 dpi. Preferred file types: TIFF, EPS, PDF or MS Office files. You can view [Example Graphical Abstracts](#) on our information site.

Authors can make use of Elsevier's [Illustration Services](#) to ensure the best presentation of their images and in accordance with all technical requirements.

Highlights

Highlights are mandatory for this journal. They consist of a short collection of bullet points that convey the core findings of the article and should be submitted in a separate editable file in the online submission system. Please use 'Highlights' in the file name and include 3 to 5 bullet points (maximum 85 characters, including spaces, per bullet point). You can view [example Highlights](#) on our information site.

Keywords

Immediately after the abstract, provide a maximum of 10 keywords. Use American or British spelling but be consistent throughout the keywords and manuscript text. Avoid general and plural terms and multiple concepts (avoid, for example, "and", "of"). Be sparing with abbreviations: only abbreviations firmly established in the field may be eligible. These keywords will be used for indexing purposes.

Abbreviations

Define abbreviations that are not standard in this field in a footnote to be placed on the first page of the article. Such abbreviations that are unavoidable in the abstract must be defined at their first mention there, as well as in the footnote. Ensure consistency of abbreviations throughout the article.

Acknowledgements

Collate acknowledgements in a separate section at the end of the article before the references and do not, therefore, include them on the title page, as a footnote to the title or otherwise. List here those individuals who provided help during the research (e.g., providing language help, writing assistance or proof reading the article, etc.).

Formatting of funding sources

List funding sources in this standard way to facilitate compliance to funder's requirements:

Funding: This work was supported by the National Institutes of Health [grant numbers xxxx, yyyy]; the Bill & Melinda Gates Foundation, Seattle, WA [grant number zzzz]; and the United States Institutes of Peace [grant number aaaa].

It is not necessary to include detailed descriptions on the program or type of grants and awards. When funding is from a block grant or other resources available to a university, college, or other research institution, submit the name of the institute or organization that provided the funding.

If no funding has been provided for the research, please include the following sentence:

This research did not receive any specific grant from funding agencies in the public, commercial, or not-for-profit sectors.

Math formulae

Please submit math equations as editable text and not as images. Present simple formulae in line with normal text where possible and use the solidus (/) instead of a horizontal line for small fractional terms, e.g., X/Y. In principle, variables are to be presented in italics. Powers of e are often more conveniently denoted by exp. Number consecutively any equations that have to be displayed separately from the text (if referred to explicitly in the text).

Footnotes

Footnotes should be used sparingly. Number them consecutively throughout the article. Many word processors build footnotes into the text, and this feature may be used. Should this not be the case, indicate the position of footnotes in the text and present the footnotes themselves separately at the end of the article.

Artwork

Electronic artwork

General points

- Make sure you use uniform lettering and sizing of your original artwork.
- Preferred fonts: Arial (or Helvetica), Times New Roman (or Times), Symbol, Courier.
- Number the illustrations according to their sequence in the text.
- Use a logical naming convention for your artwork files.
- Indicate per figure if it is a single, 1.5 or 2-column fitting image.
- For Word submissions only, you may still provide figures and their captions, and tables within a single file at the revision stage.
- Please note that individual figure files larger than 10 MB must be provided in separate source files. A detailed [guide on electronic artwork](#) is available.

You are urged to visit this site; some excerpts from the detailed information are given here.

Formats

Regardless of the application used, when your electronic artwork is finalized, please 'save as' or convert the images to one of the following formats (note the resolution requirements for line drawings, halftones, and line/halftone combinations given below):

EPS (or PDF): Vector drawings. Embed the font or save the text as 'graphics'.

TIFF (or JPG): Color or grayscale photographs (halftones): always use a minimum of 300 dpi.

TIFF (or JPG): Bitmapped line drawings: use a minimum of 1000 dpi.

TIFF (or JPG): Combinations bitmapped line/half-tone (color or grayscale): a minimum of 500 dpi is required.

Please do not:

- Supply files that are optimized for screen use (e.g., GIF, BMP, PICT, WPG); the resolution is too low.
- Supply files that are too low in resolution.
- Submit graphics that are disproportionately large for the content.

Color artwork

Please make sure that artwork files are in an acceptable format (TIFF (or JPEG), EPS (or PDF), or MS Office files) and with the correct resolution. If, together with your accepted article, you submit usable color figures then Elsevier will ensure, at no additional charge, that these figures will appear in color online (e.g., ScienceDirect and other sites) regardless of whether or not these illustrations are reproduced in color in the printed version. **For color reproduction in print, you will receive information regarding the costs from Elsevier after receipt of your accepted article.** Please indicate your preference for color: in print or online only. [Further information on the preparation of electronic artwork.](#)

Figure captions

Ensure that each illustration has a caption. A caption should comprise a brief title (**not** on the figure itself) and a description of the illustration. Keep text in the illustrations themselves to a minimum but explain all symbols and abbreviations used.

Tables

Please submit tables as editable text and not as images. Tables can be placed either next to the relevant text in the article, or on separate page(s) at the end. Number tables consecutively in accordance with their appearance in the text and place any table notes below the table body. Be sparing in the use of tables and ensure that the data presented in them do not duplicate results described elsewhere in the article. Please avoid using vertical rules and shading in table cells.

References

The reference list should include about 50 references in total. The majority of the references should come from the period under review (i.e., last 12-18 months), and, in general, half of these should be selected as being papers of special or outstanding interest.

Papers accepted as 'in press' may be included (but see information on unpublished data below). Papers presented at conferences must have full publication details or they will be included in the text as personal communications, as they will be unavailable to readers.

Please select papers that are of special interest (*) or outstanding interest (**) from the review period (i.e. last 12-18 months) or papers 'in press' only. For each selected reference, please provide a brief description of the major findings of the study and say why, in your opinion, as a frontrunner in research, this is important and/or interesting.

Unpublished data (including papers in preparation, papers submitted for publication and personal communications) should not be mentioned in the reference list. If you feel that the unpublished work is crucial to the review, please mention it in the text only. Please keep in mind that citations of abstracts and conference proceedings should be restricted to sources freely available to most readers. (If a submitted paper is accepted for publication before we go to press, then this information can be added as a 'Note added in proof'. These references should be presented in the text as follows (please list all authors):

1. Personal communications: (SW Churchill, personal communication)
2. Author's own submitted papers: (IMN Author, unpublished data)
3. Abstracts: (A Early, Abstract 54, 3rd International Meeting of Ichthyology, 13--16 September 1998, Washington DC.) or (A Early, Soc Neurosci Abstr 1998, 4:154). Full information, except for title of abstract, is required. Personal communications must be authorized by those involved. You are responsible for the accuracy of the References and for obtaining permission to use personal communications.

Reference List

The reference list should include about 50 references in total. The majority of the references should come from the period under review (i.e. last 12-18 months), and, in general, half of these should be selected as being papers of special or outstanding interest (see 3.2 below).

3.1 Reference list

References should be numbered consecutively in the order in which they are cited in the text, followed by those that are only cited in the figure legends or tables. Papers accepted as 'in press' may be included (but see 3.3 below). Papers presented at conferences must have full publication details or they will be included in the text as personal communications, as they will be unavailable to readers.

3.2 Selected references

Please select papers that are of special interest (*) or outstanding interest () from the review period (i.e. last 12-18 months) or papers 'in press' only.** For each selected reference, please provide a brief description of the major findings of the study and say why, in your opinion, as a frontrunner in research, this is important and/or interesting.

3.3 Unpublished data and abstracts

Unpublished data (including papers in preparation, papers submitted for publication and personal communications) should not be mentioned in the reference list. If you feel that the unpublished work is crucial to the review, please mention it in the text only. Please keep in mind that citations of abstracts and conference proceedings should be restricted to sources freely available to most readers.

(If a submitted paper is accepted for publication before we go to press, then this information can be added as a 'Note added in proof'. These references should be presented in the text as follows (please list all authors):

1. Personal communications: (SW Churchill, personal communication)
2. Author's own submitted papers: (IMN Author, unpublished data)
3. Abstracts: (A Early, Abstract 54, 3rd International Meeting of Ichthyology, 13--16 September 1998, Washington DC.) or (A Early, Soc Neurosci Abstr 1998, 4:154). Full information, except for title of abstract, is required.

Personal communications must be authorized by those involved. You are responsible for the accuracy of the References and for obtaining permission to use personal communications.

Citation in text

Please ensure that every reference cited in the text is also present in the reference list (and vice versa). Any references cited in the abstract must be given in full. Unpublished results and personal communications are not recommended in the reference list, but may be mentioned in the text. If these references are included in the reference list they should follow the standard reference style of the journal and should include a substitution of the publication date with either 'Unpublished results' or 'Personal communication'. Citation of a reference as 'in press' implies that the item has been accepted for publication.

Web references

As a minimum, the full URL should be given and the date when the reference was last accessed. Any further information, if known (DOI, author names, dates, reference to a source publication, etc.), should also be given. Web references can be listed separately (e.g., after the reference list) under a different heading if desired, or can be included in the reference list.

Data references

This journal encourages you to cite underlying or relevant datasets in your manuscript by citing them in your text and including a data reference in your Reference List. Data references should include the following elements: author name(s), dataset title, data repository, version (where available), year, and global persistent identifier. Add [dataset] immediately before the reference so we can properly identify it as a data reference. The [dataset] identifier will not appear in your published article.

References in a special issue

Please ensure that the words 'this issue' are added to any references in the list (and any citations in the text) to other articles in the same Special Issue.

Reference management software

Most Elsevier journals have their reference template available in many of the most popular reference management software products. These include all products that support [Citation Style Language styles](#), such as [Mendeley](#) and [Zotero](#), as well as [EndNote](#). Using the word processor plug-ins from these products, authors only need to select the appropriate journal template when preparing their article, after which citations and bibliographies will be automatically formatted in the journal's style. If no template is yet available for this journal, please follow the format of the sample references and citations as shown in this Guide.

Users of Mendeley Desktop can easily install the reference style for this journal by clicking the following link:

<http://open.mendeley.com/use-citation-style/current-opinion-in-solid-state-and-materials-science>

When preparing your manuscript, you will then be able to select this style using the Mendeley plug-ins for Microsoft Word or LibreOffice.

Reference formatting

There are no strict requirements on reference formatting at submission. References can be in any style or format as long as the style is consistent. Where applicable, author(s) name(s), journal title/book title, chapter title/article title, year of publication, volume number/book chapter and the pagination must be present. Use of DOI is highly encouraged. The reference style used by the journal will be applied to the accepted article by Elsevier at the proof stage. Note that missing data will be highlighted at proof stage for the author to correct. If you do wish to format the references yourself they should be arranged according to the following examples:

Reference style

Text: Indicate references by number(s) in square brackets in line with the text. The actual authors can be referred to, but the reference number(s) must always be given.

Example: '..... as demonstrated [3,6]. Barnaby and Jones [8] obtained a different result'

List: Number the references (numbers in square brackets) in the list in the order in which they appear in the text.

Examples:

Reference to a journal publication:

[1] J. van der Geer, J.A.J. Hanraads, R.A. Lupton, The art of writing a scientific article, *J. Sci. Commun.* 163 (2010) 51–59.

Reference to a book:

[2] W. Strunk Jr., E.B. White, *The Elements of Style*, fourth ed., Longman, New York, 2000.

Reference to a chapter in an edited book:

[3] G.R. Mettam, L.B. Adams, How to prepare an electronic version of your article, in: B.S. Jones, R.Z. Smith (Eds.), *Introduction to the Electronic Age*, E-Publishing Inc., New York, 2009, pp. 281–304.

Reference to a website:

[4] Cancer Research UK, Cancer statistics reports for the UK. <http://www.cancerresearchuk.org/aboutcancer/statistics/cancerstatsreport/>, 2003 (accessed 13 March 2003).

Reference to a dataset:

[dataset] [5] M. Oguro, S. Imahiro, S. Saito, T. Nakashizuka, Mortality data for Japanese oak wilt disease and surrounding forest compositions, *Mendeley Data*, v1, 2015. <https://doi.org/10.17632/xwj98nb39r.1>.

Reference style

Please type the references in our house style: this avoids retyping of the references, in which errors may be introduced. (See sections 3.1 and 3.3 for instructions on what to include here.) The most important points are listed below; please follow these guidelines:

- i. DO NOT INDENT any part of a reference.
- ii. Mark bulleted references with asterisks to the left of the number, e.g. [*1] Bloggs J,
- iii. The only letters in the reference titles that should be capitalized are the ones starting the title, acronyms and any proper nouns (e.g. Huntington's, DNA, *Drosophila*).
- iv. JOURNAL NAMES should be abbreviated as in *Index Medicus* or *Current Contents*.
- v. PUNCTUATE the references exactly as shown in the examples following.

JOURNAL *example*: [*1] Bloggs J, Smith A, Jones B. Synergistic activation of transcription by multiple binding sites for NF-kB. *J Mol Biol* 1998;4:25-27.

BOOK *example*: [1] Bloggs J, Smith A, Jones B. Some aspects of the biology of cells and their possible evolutionary significance. In: Schnell TW, Bonnet AH, editors, *Organization and Control of Cells*, 3rd edn, New York: Chapman and Hall, 1992:25-27.

Journal abbreviations source

Journal names should be abbreviated according to the [List of Title Word Abbreviations](#).

Supplementary material

Supplementary material such as applications, images and sound clips, can be published with your article to enhance it. Submitted supplementary items are published exactly as they are received (Excel or PowerPoint files will appear as such online). Please submit your material together with the article and supply a concise, descriptive caption for each supplementary file. If you wish to make changes to supplementary material during any stage of the process, please make sure to provide an updated file. Do not annotate any corrections on a previous version. Please switch off the 'Track Changes' option in Microsoft Office files as these will appear in the published version.

Supplementary material

Please type the references in our house style: this avoids retyping of the references, in which errors may be introduced. (See sections 3.1 and 3.3 for instructions on what to include here.) The most important points are listed below; please follow these guidelines:

- i. DO NOT INDENT any part of a reference.
- ii. Mark bulleted references with asterisks to the left of the number, e.g. [*1] Bloggs J,
- iii. The only letters in the reference titles that should be capitalized are the ones starting the title, acronyms and any proper nouns (e.g. Huntington's, DNA, Drosophila).
- iv. JOURNAL NAMES should be abbreviated as in Index Medicus or Current Contents.
- v. PUNCTUATE the references exactly as shown in the examples following.

JOURNAL example: [*1] Bloggs J, Smith A, Jones B. Synergistic activation of transcription by multiple binding sites for NF-kB. *J Mol Biol* 1998;4:25-27.

BOOK example: [1] Bloggs J, Smith A, Jones B. Some aspects of the biology of cells and their possible evolutionary significance. In: Schnell TW, Bonnet AH, editors, *Organization and Control of Cells*, 3rd edn, New York: Chapman and Hall, 1992:25-27.

RESEARCH DATA

This journal encourages and enables you to share data that supports your research publication where appropriate, and enables you to interlink the data with your published articles. Research data refers to the results of observations or experimentation that validate research findings. To facilitate reproducibility and data reuse, this journal also encourages you to share your software, code, models, algorithms, protocols, methods and other useful materials related to the project.

Below are a number of ways in which you can associate data with your article or make a statement about the availability of your data when submitting your manuscript. If you are sharing data in one of these ways, you are encouraged to cite the data in your manuscript and reference list. Please refer to the "References" section for more information about data citation. For more information on depositing, sharing and using research data and other relevant research materials, visit the [research data](#) page.

Data linking

If you have made your research data available in a data repository, you can link your article directly to the dataset. Elsevier collaborates with a number of repositories to link articles on ScienceDirect with relevant repositories, giving readers access to underlying data that gives them a better understanding of the research described.

There are different ways to link your datasets to your article. When available, you can directly link your dataset to your article by providing the relevant information in the submission system. For more information, visit the [database linking page](#).

For [supported data repositories](#) a repository banner will automatically appear next to your published article on ScienceDirect.

In addition, you can link to relevant data or entities through identifiers within the text of your manuscript, using the following format: Database: xxxx (e.g., TAIR: AT1G01020; CCDC: 734053; PDB: 1XFN).

Mendeley Data

This journal supports Mendeley Data, enabling you to deposit any research data (including raw and processed data, video, code, software, algorithms, protocols, and methods) associated with your manuscript in a free-to-use, open access repository. During the submission process, after uploading your manuscript, you will have the opportunity to upload your relevant datasets directly to *Mendeley Data*. The datasets will be listed and directly accessible to readers next to your published article online.

For more information, visit the [Mendeley Data for journals page](#).

Data statement

To foster transparency, we encourage you to state the availability of your data in your submission. This may be a requirement of your funding body or institution. If your data is unavailable to access or unsuitable to post, you will have the opportunity to indicate why during the submission process, for example by stating that the research data is confidential. The statement will appear with your published article on ScienceDirect. For more information, visit the [Data Statement page](#).

AudioSlides

The journal encourages authors to create an AudioSlides presentation with their published article. AudioSlides are brief, webinar-style presentations that are shown next to the online article on ScienceDirect. This gives authors the opportunity to summarize their research in their own words and to help readers understand what the paper is about. [More information and examples are available](#). Authors of this journal will automatically receive an invitation e-mail to create an AudioSlides presentation after acceptance of their paper.

Interactive plots

This journal enables you to show an Interactive Plot with your article by simply submitting a data file. [Full instructions](#).

AFTER ACCEPTANCE

Online proof correction

Corresponding authors will receive an e-mail with a link to our online proofing system, allowing annotation and correction of proofs online. The environment is similar to MS Word: in addition to editing text, you can also comment on figures/tables and answer questions from the Copy Editor. Web-based proofing provides a faster and less error-prone process by allowing you to directly type your corrections, eliminating the potential introduction of errors.

If preferred, you can still choose to annotate and upload your edits on the PDF version. All instructions for proofing will be given in the e-mail we send to authors, including alternative methods to the online version and PDF.

We will do everything possible to get your article published quickly and accurately. Please use this proof only for checking the typesetting, editing, completeness and correctness of the text, tables and figures. Significant changes to the article as accepted for publication will only be considered at this stage with permission from the Editor. It is important to ensure that all corrections are sent back to us in one communication. Please check carefully before replying, as inclusion of any subsequent corrections cannot be guaranteed. Proofreading is solely your responsibility.

Offprints

The corresponding author will, at no cost, receive a customized [Share Link](#) providing 50 days free access to the final published version of the article on [ScienceDirect](#). The Share Link can be used for sharing the article via any communication channel, including email and social media. For an extra charge, paper offprints can be ordered via the offprint order form which is sent once the article is accepted for publication. Both corresponding and co-authors may order offprints at any time via Elsevier's [Webshop](#). Corresponding authors who have published their article open access do not receive a Share Link as their final published version of the article is available open access on ScienceDirect and can be shared through the article DOI link.

AUTHOR INQUIRIES

Visit the [Elsevier Support Center](#) to find the answers you need. Here you will find everything from Frequently Asked Questions to ways to get in touch.

You can also [check the status of your submitted article](#) or find out [when your accepted article will be published](#).

© Copyright 2014 Elsevier | <http://www.elsevier.com>