

Embase™

Fact Sheet



ANSWERS BASED ON COMPREHENSIVE, UP-TO-DATE INFORMATION

In the biomedical domain, users are looking for answers based on comprehensive, up-to-date information. With over 8,500 currently published biomedical journals, including all titles covered by MEDLINE, this is just what Embase is able to offer.



ELSEVIER



Embase™ Fact Sheet

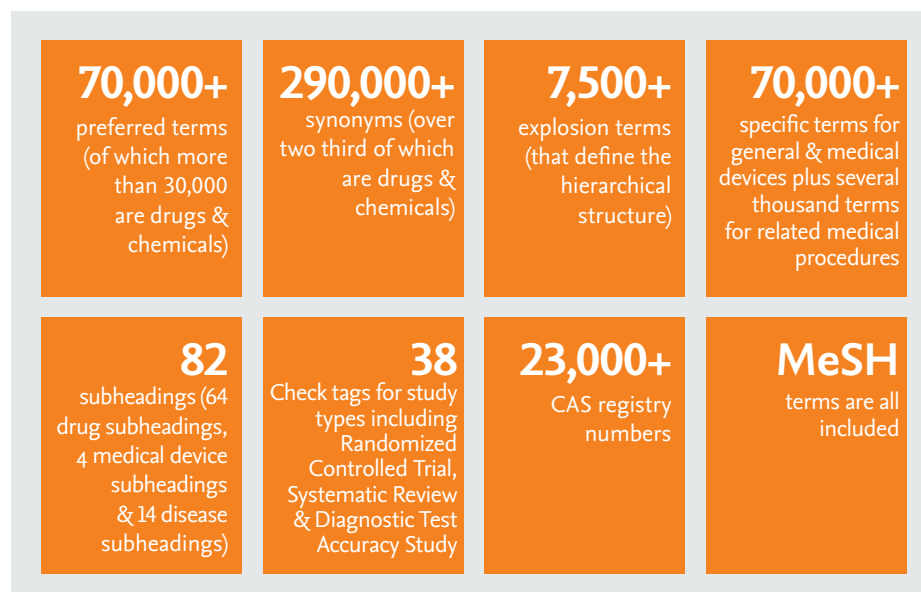
EMTREE: The Life Science Thesaurus

Emtree is Elsevier's Life Science Thesaurus. It is a hierarchically structured, controlled vocabulary, for Biomedicine and related Life Sciences.

EMTREE PROVIDES A CONSISTENT DESCRIPTION OF BIOMEDICAL INFORMATION:

- It offers indexers a comprehensive vocabulary to describe the content of biomedical data
- For database users, it facilitates comprehensive searching and high precision retrieval

EMTREE HAS BEEN USED TO INDEX EMBASE (INCLUDING EMBASE CLASSIC) SINCE 1947, AND IS UNRIVALLED IN ITS COVERAGE OF DRUG AND MEDICAL TERMINOLOGY.



In addition, Emtree contains all drug generic names described by FDA and EMA, all International Non-Proprietary Names (INNs) described by WHO from 2000, and extended coverage of Trade Names described by many major pharmaceutical companies.

USER BENEFITS

COVERAGE IN A NUTSHELL

Emtree is one of the most comprehensive thesauri available for Life Science information, with a unique focus on drug terminology.

- Easy to search: with access via more than 290,000 synonyms; each term has on average more than four synonyms
- Comprehensive drug coverage: Emtree includes chemical names, trade names, and laboratory/research codes as well as generic names for more than 31,000 drugs and chemicals, including all generic names recognised by FDA, EMA and WHO (from 2000)
- Medical devices: Emtree includes over 3,000 specific terms for medical devices (e.g. endoscopes, catheters, prostheses and materials) as well as several thousand terms for related medical procedures, (e.g. endoscopy, catheterization, transluminal coronary angioplasty)
- Check tags: Over 50 terms including 38 study types, important aspects of human and animal studies and groups for age and sex.
- Up-to-date: the latest drugs, diseases, organisms and procedures are indexed as candidate terms throughout the year, and the most frequently used terms are added 3 times a year to Emtree
- Explosion (tree) searching: facilitated by Emtree's extensive hierarchical structure, with up to 12 levels
- Polyhierarchical structure: no need to know "where" terms are located in the Emtree structure
- Natural language terminology: no need to know "how" terms are defined in Emtree
- Inclusive terminology: includes all MeSH terms, with links to more than 23,000 CAS registry numbers

FAQ

Question:

When is Emtree updated and how frequently?

Answer:

Three times a year in January, May and September.

Question:

How are changes for new terms agreed?

Answer:

New terms are included primarily on the basis of frequency of use as candidate terms, with special focus on drugs, diseases and devices.

Question:

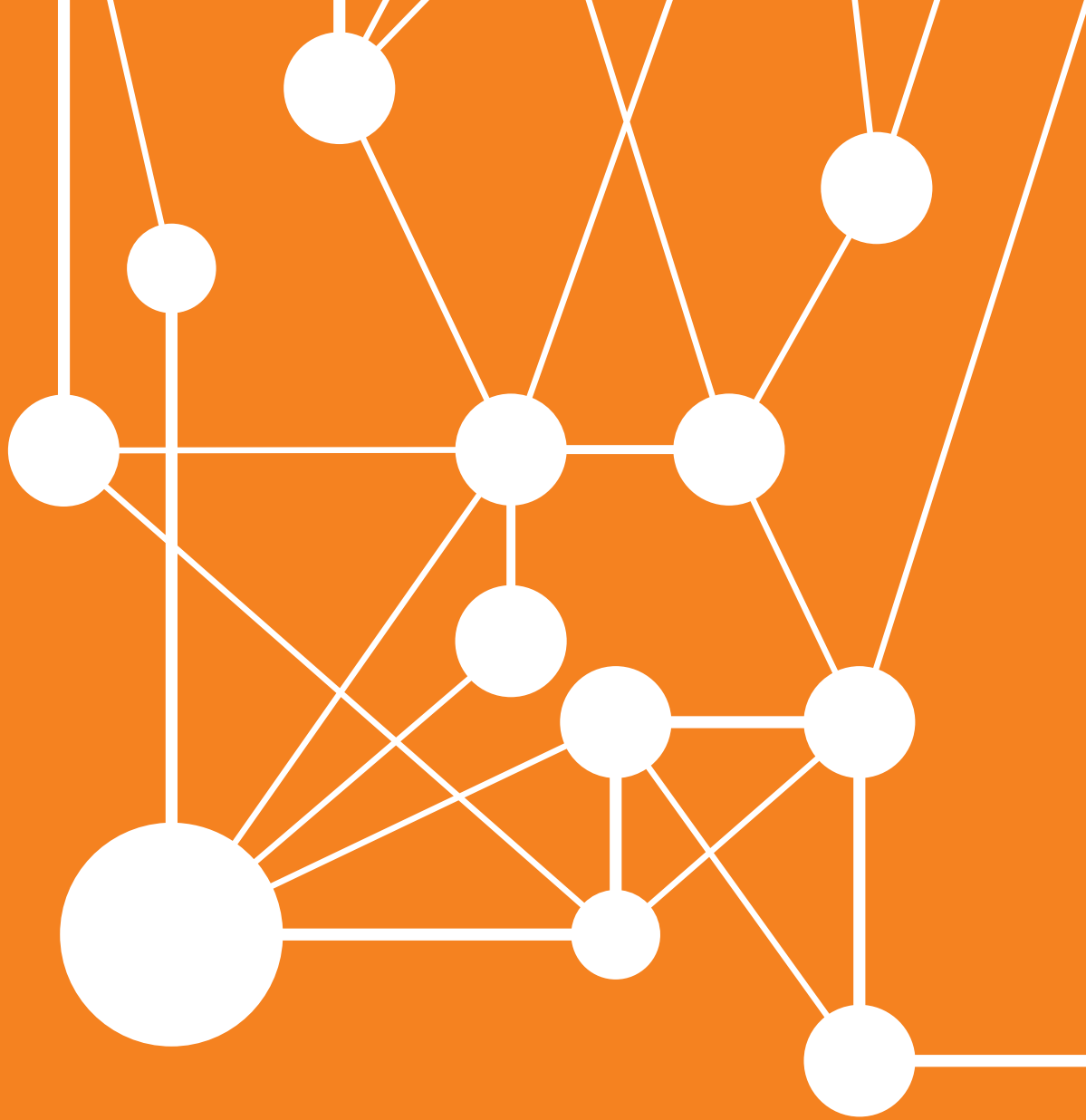
How frequently are changes in branches of the hierarchy made?

Answer:

Hierarchical changes are infrequent, but are occasioned for example by developments in drug, disease or device classes.

Want to learn more? Visit our website at:

www.elsevier.com/online-tools/embase



LEARN MORE

To request information or a product demonstration, please visit elsevier.com/embase or email us at embase@elsevier.com.

Visit www.elsevier.com/online-tools/corporate or contact your nearest Elsevier office.

ASIA AND AUSTRALIA

Tel: + 65 6349 0222

Email: sginfo@elsevier.com

JAPAN

Tel: + 81 3 5561 5034

Email: jpinfo@elsevier.com

KOREA AND TAIWAN

Tel: +82 2 6714 3000

Email: krinfo.corp@elsevier.com

EUROPE, MIDDLE EAST AND AFRICA

Tel: +31 20 485 3767

Email: ninfo@elsevier.com

NORTH AMERICA, CENTRAL AMERICA AND CANADA

Tel: +1 888 615 4500

Email: usinfo@elsevier.com

SOUTH AMERICA

Tel: +55 21 3970 9300

Email: brinfo@elsevier.com