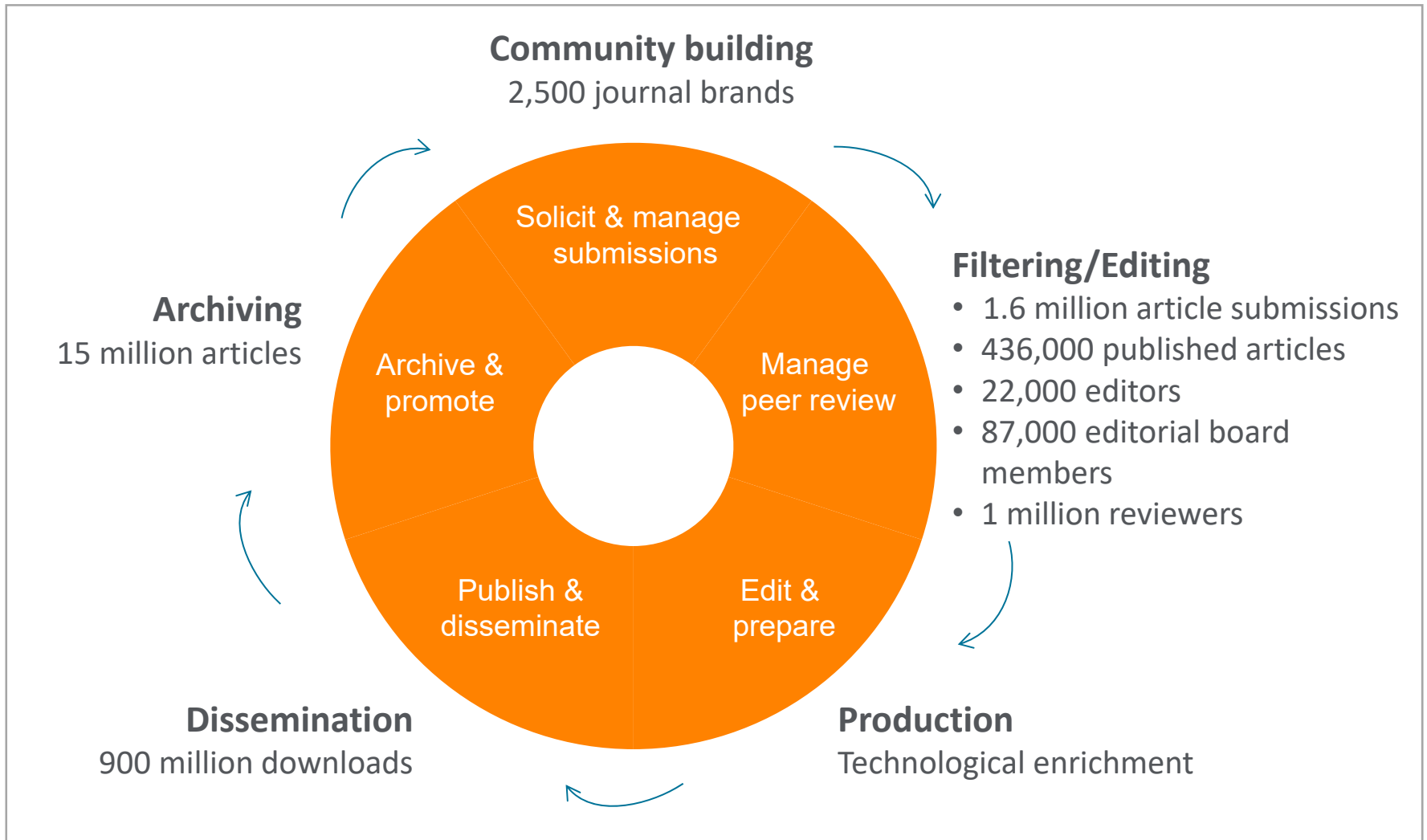


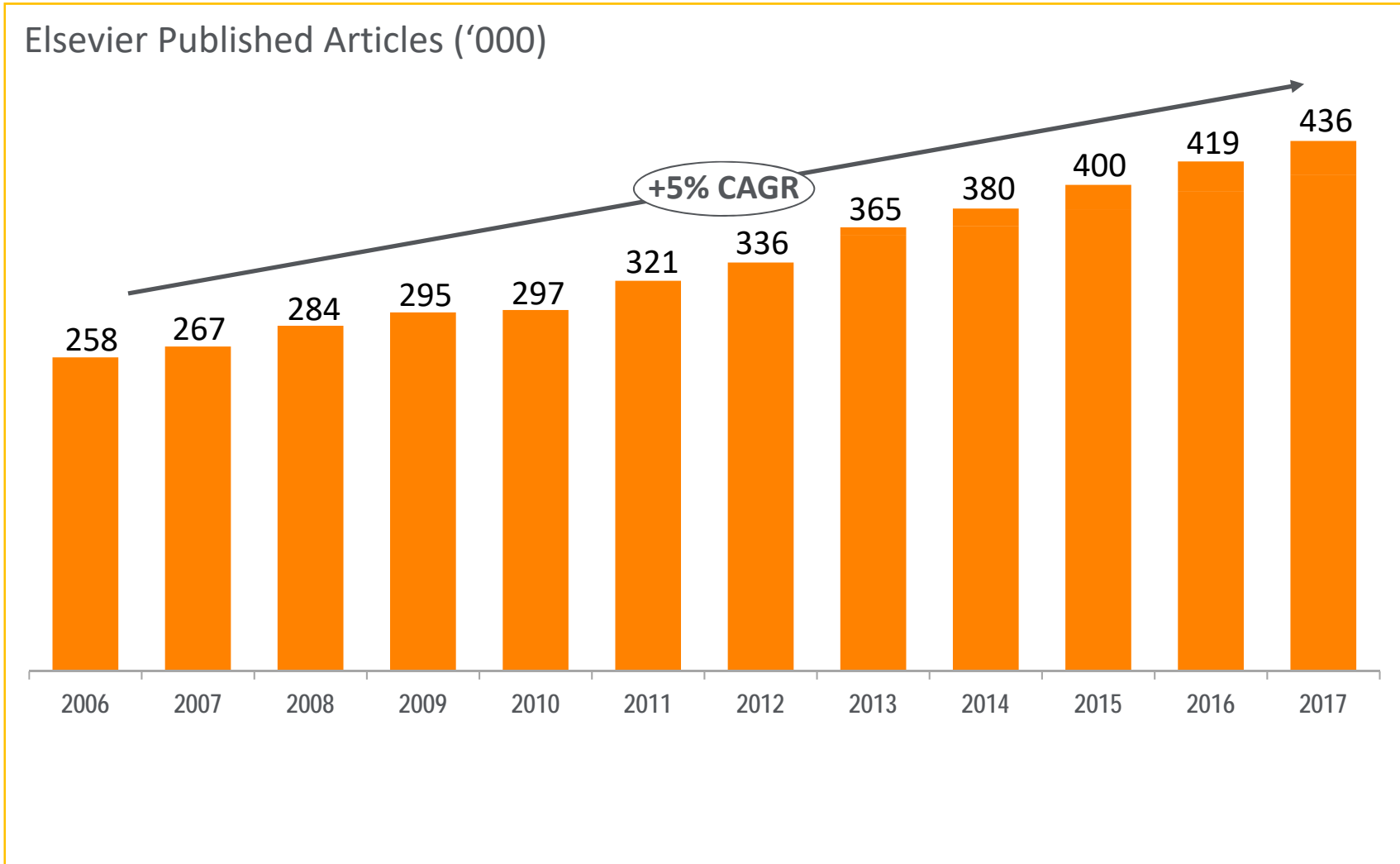
Journal and Article Ecosystem

Elsevier's support to the journal eco-system



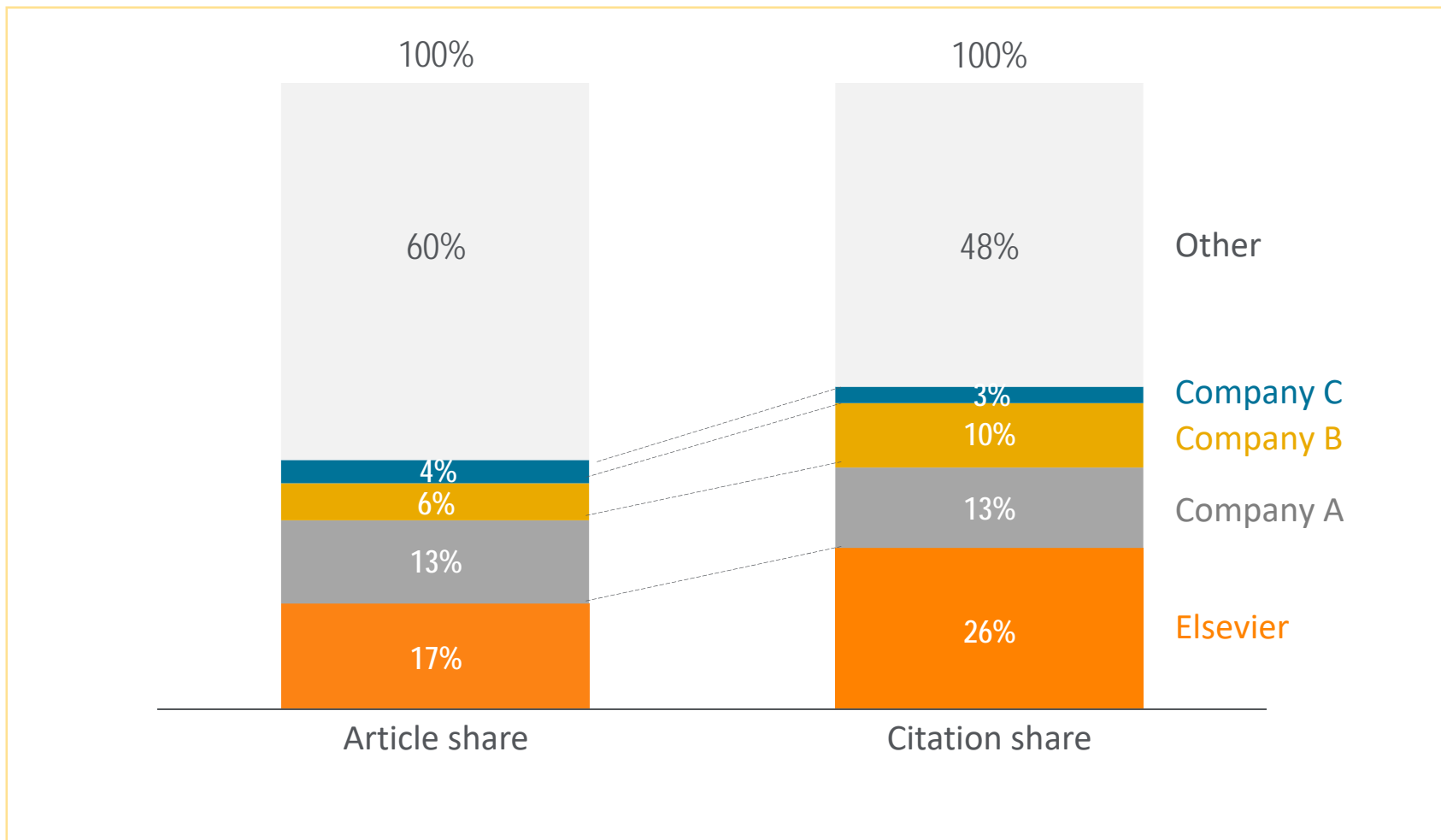
Article Volume Growth

Consistent article volume growth



Journal and Article Quality

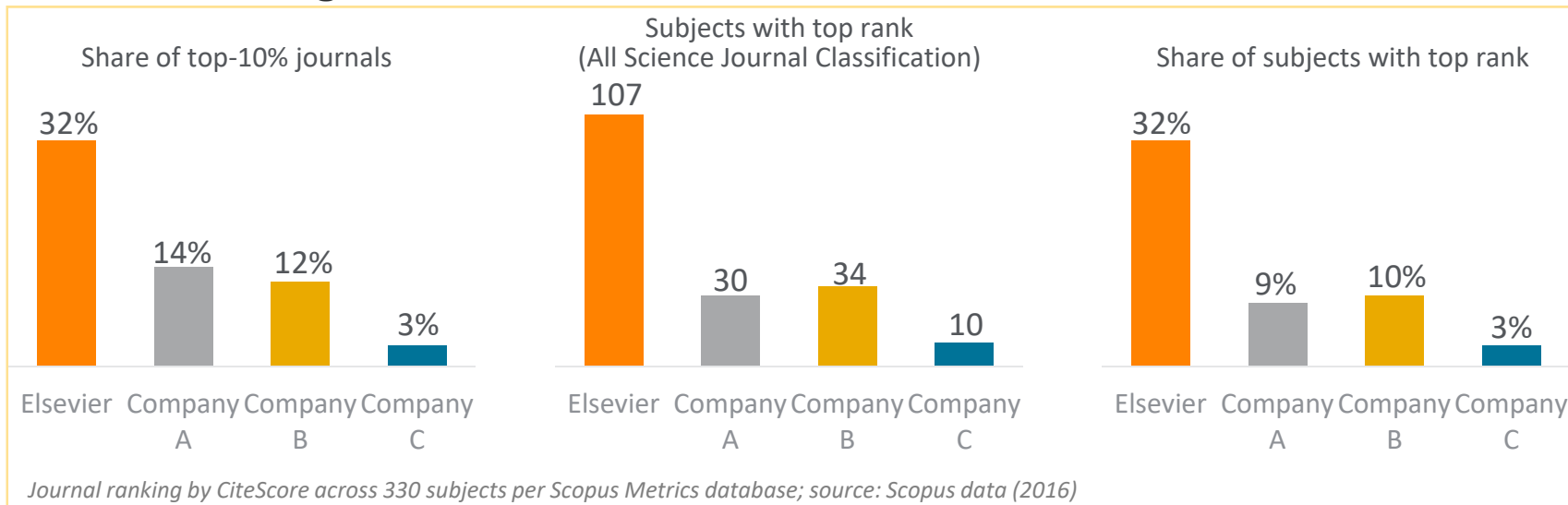
Article and citation share



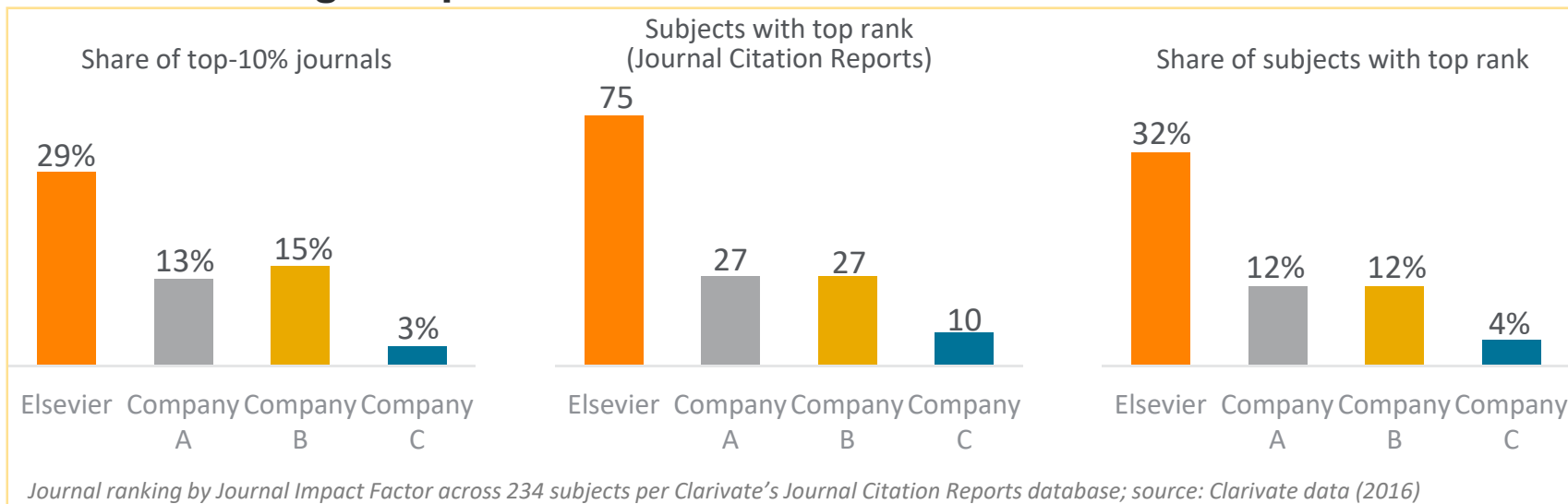
Share of articles per publisher (published in 2015) and citation share (citations in 2011-15 in relation to articles published in 2011-15). Source: Scopus data

Journal and Article Quality

Journal ranking – Citescore

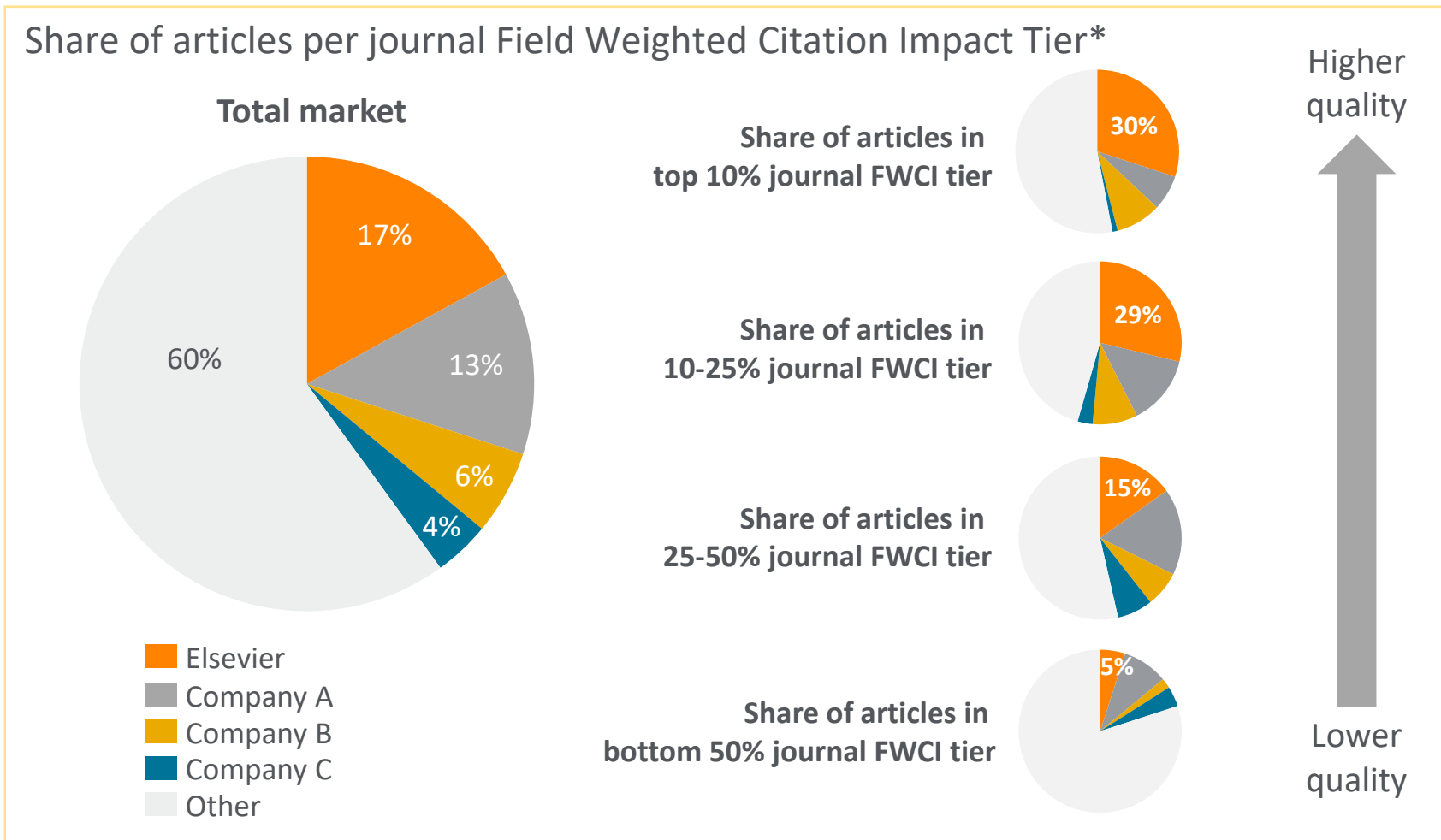


Journal ranking – Impact Factor



Journal and Article Quality

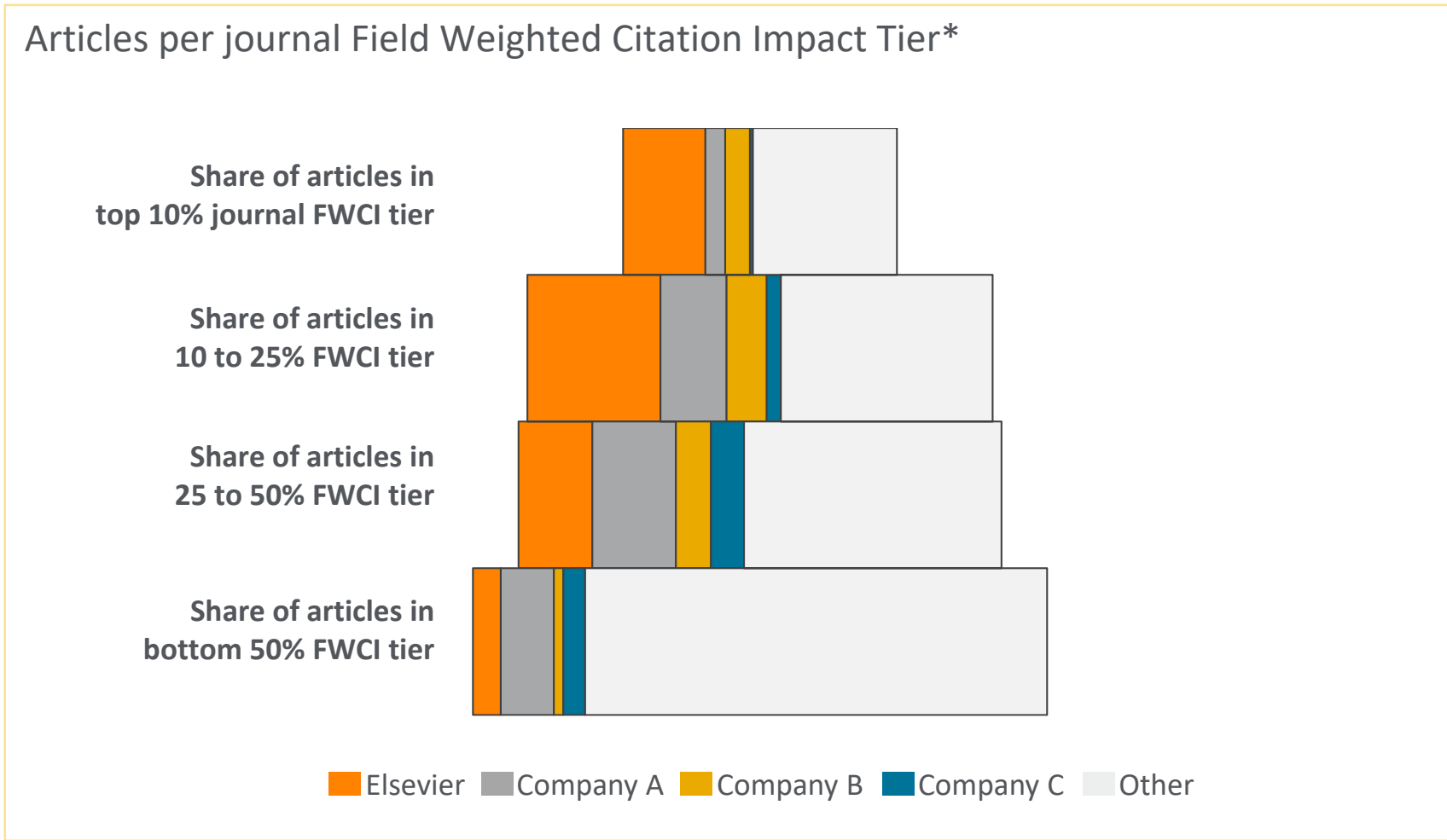
Share of articles per journal quality tier



* Article share (articles published in 2016) per journal Field Weighted Citation Impact (FWCI) tier. Field Weighted Citation Impact (FWCI) is calculated on the basis of citations in 2012-16 to articles published in 2012-16 and accounts for article type, publication year and subject field. Source: Scopus data

Journal and Article Quality

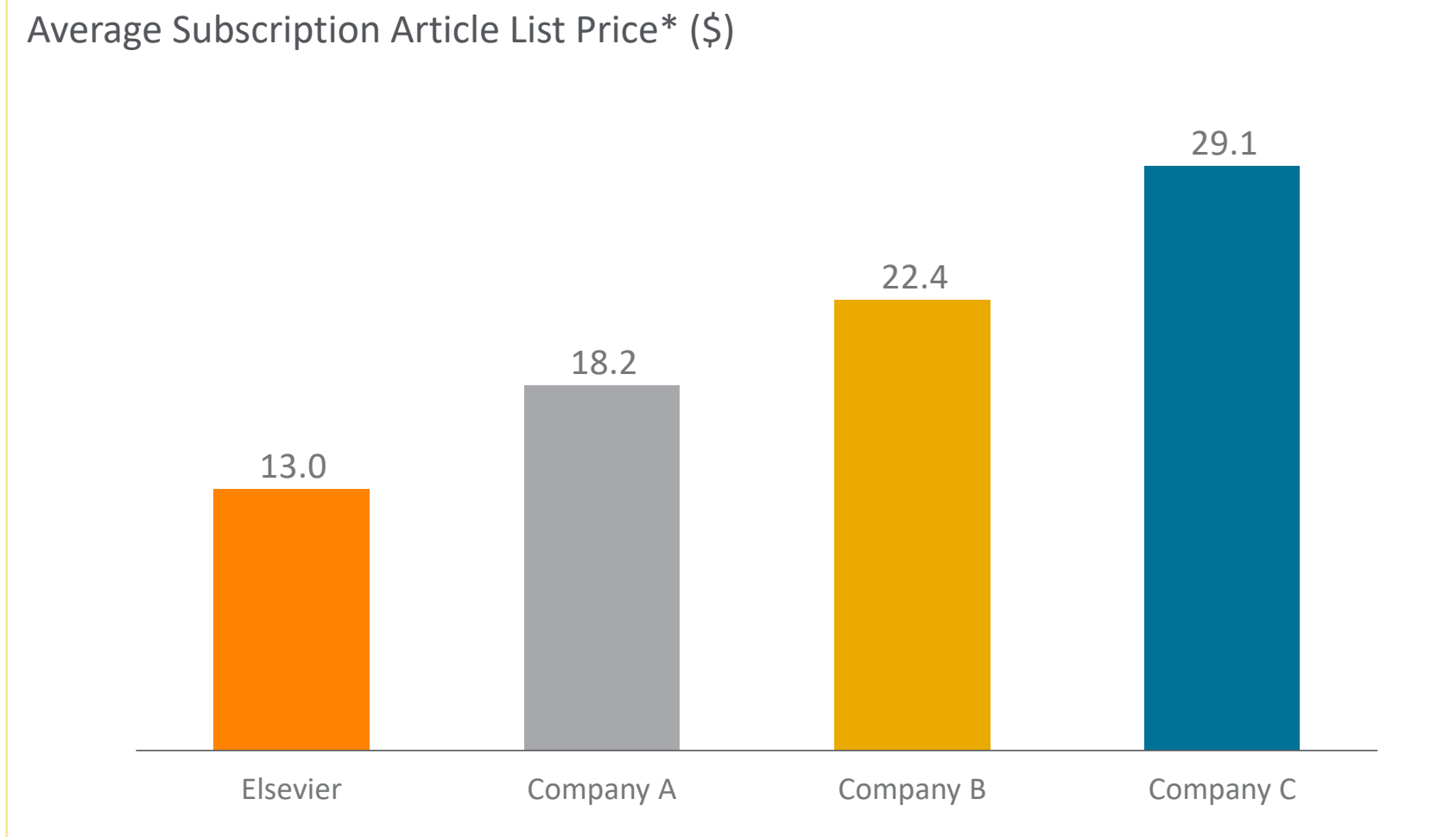
Share of articles per journal quality tier



* Article share (articles published in 2016) per journal Field Weighted Citation Impact (FWCI) tier. Field Weighted Citation Impact (FWCI) is calculated on the basis of citations in 2012-16 to articles published in 2012-16 and accounts for article type, publication year and subject field. Source: Scopus data

Journal Article Price

Average list price per subscription article



* Weighted average of list prices for 2016 subscription year versus articles published in 2016.

Source: Publisher websites, Scopus data