

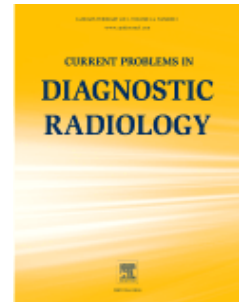


CURRENT PROBLEMS IN DIAGNOSTIC RADIOLOGY

AUTHOR INFORMATION PACK

TABLE OF CONTENTS

- **Description** p.1
- **Editorial Board** p.1
- **Guide for Authors** p.3



ISSN: 0363-0188

DESCRIPTION

Current Problems in Diagnostic Radiology covers important and controversial topics in **radiology**. Each issue presents important viewpoints from leading radiologists. High-quality reproductions of **radiographs, CT scans, MR images, and sonograms** clearly depict what is being described in each article. Also included are valuable updates relevant to other areas of practice, such as medical-legal issues or archiving systems. With new multi-topic format and image-intensive style, *Current Problems in Diagnostic Radiology* offers an outstanding, time-saving investigation into current topics most relevant to radiologists.

Benefits to authors

We also provide many author benefits, such as free PDFs, a liberal copyright policy, special discounts on Elsevier publications and much more. Please click here for more information on our [author services](#).

Please see our [Guide for Authors](#) for information on article submission. If you require any further information or help, please visit our support pages: <http://support.elsevier.com>

EDITORIAL BOARD

Editor-in-Chief:

Puneet Bhargava, University of Washington / VA Puget Sound Health Care System

Editorial Board

Brian C. Allen, Wake Forest Baptist Medical Center, Winston-Salem, NC

Rivka Cohen, MD Anderson Cancer Center, Houston, TX

Jonathan Flug, University of Colorado Hospital, Aurora, CO

Tamara M. Haygood, MD Anderson Cancer Center

Matthew T. Heller, University of Pittsburgh Medical Center, Pittsburgh, PA

Jason Itri, University of Cincinnati College of Medicine

Clint Jokerst, University of Arizona Health Sciences Center, Tucson, AZ

Douglas S. S. Katz, Winthrop University Hospital, Mineola, NY

Amanda E. E. Lackey, University of Arkansas for Medical Sciences, Little, AR

Chandana Lall, University of California, Irvine

Ramit Lamba, University of California Davis Health System

Fred M. Moelslein, University of Maryland School of Medicine

Tan-Lucien Mohammed, Virginia Mason Medical Center, Seattle, WA

Mariam Moshiri, University of Washington, Seattle

Sachin Saboo, Brigham and Women's Hospital, Boston, MA

Jabi E. Shriki, University of Washington
Stacey E. Smith, Brigham and Women's Hospital
Gary J. Whitman, MD Anderson Cancer Center, Houston, TX

GUIDE FOR AUTHORS

CURRENT PROBLEMS IN DIAGNOSTIC RADIOLOGY is a peer-reviewed journal indexed in PubMed/MEDLINE, providing high-quality, in-depth, current clinical information to subscribers for use in their daily practice. The Journal's principal interests are clinical practice, practice management, original research applicable to clinical radiology practice, quality improvement, and education and training.

ARTICLE CATEGORIES

REVIEW ARTICLE

Review articles should be an extended, scholarly analysis of a particular, timely topic of interest to academic and clinical radiologists. Review articles should include an abstract and a conclusion in addition to the text of the article. Articles submitted in this category should have a maximum of 5000 words, 40 illustrations and 50 references.

ORIGINAL ARTICLE

The submission of original research articles applicable to daily practice is encouraged since the readership of our journal mostly includes clinical radiologists. Therefore, submissions that are heavily oriented towards basic sciences are unlikely to be considered for review. Original research articles should each include an Abstract, Introduction, Methods, Results, and Discussion. Clinically-based, original research articles should be a maximum of 4000 words, 15 illustrations and 50 references.

TECHNICAL INNOVATION

This is a brief description of a specific technique, technical modification, procedure, unique software application, or new equipment of interest to radiologists. Discussion is limited to the specific message, including the uses of the technique, equipment, or software. Literature reviews and lengthy descriptions of cases are not appropriate. Technical innovation articles are limited to a maximum of 1250 words, 6 illustrations, and 10 references.

CLINICAL OPINION SPOTLIGHT

Most of the manuscripts accepted in this category will be solicited by the editorial staff. However, unsolicited manuscripts in this category will also be considered. Submissions from non-radiology physicians are encouraged. In order to express interest in submitting a spotlight manuscript, an email can be sent to section editor, Dr. Jabi E. Shriki, shriki@uw.edu. Submissions should be a maximum of 2200 words, 10 illustrations and 10 references. Also, a 6-point summary should be provided as part of the manuscript submission.

LEARNING FROM EXPERIENCE (LFE)

Manuscripts submitted under this category should describe an institutional experience addressing a specific issue or problem. LFE manuscripts should have four sections: 1. Description of the problem; 2. Institutional approach employed to address the problem; 3. Description of the outcomes of the institutional practice or change in practice; 4. And discussion of future directions. Authors should compare their approach to other, similar past attempts published in the literature. The discussion of future directions should provide insight into how this problem is likely to evolve and the expected outcome of the authors' work on the specific issue addressed. Quality improvement topics are ideally suited to this format. LFE submissions are brief communications and should be a maximum of 2000 words.

THE EDUCATION CORNER

Manuscript submissions under this category should comment on particular aspects of education or educational issues related to clinical practice. These submissions are brief communications and should be a maximum of 2000 words.

LETTER TO THE EDITOR AND REPLY

Letters to the Editor and Replies should offer objective and constructive criticism of articles published in the CPDR within the previous two months. Letters in this category will rarely be considered if submitted later than two months after publication of the initial article. Only data documented in published material should be included in the letter. Letters may also discuss matters of general interest to radiologists. Letters should not duplicate prior published material or be under consideration for

publication elsewhere. The Editorial staff will publish letters at their discretion. Submitted letters are subject to editing of content and style. Letters are limited to a maximum of 700 words, 4 references and 4 images. No tables should be included.

Please submit manuscripts on the journal's editorial site (<http://ees.elsevier.com/cpdr/>). For questions about the submission process, contact Preeti Singh, CPDR Managing Editor: editorCPDR@gmail.com

Manuscripts submitted as Original Articles will undergo peer review to provide expert input prior to the Editor-in-Chief's decision. All manuscripts should have author and affiliation information blinded to ensure an unbiased review process.

BEFORE YOU BEGIN

Ethics in publishing

For information on Ethics in publishing and Ethical guidelines for journal publication see <http://www.elsevier.com/publishingethics> and <http://www.elsevier.com/journal-authors/ethics>.

Conflict of interest

All authors must disclose any financial and personal relationships with other people or organizations that could inappropriately influence (bias) their work. Examples of potential conflicts of interest include employment, consultancies, stock ownership, honoraria, paid expert testimony, patent applications/registrations, and grants or other funding. If there are no conflicts of interest then please state this: 'Conflicts of interest: none'. See also <http://www.elsevier.com/conflictsofinterest>. Further information and an example of a Conflict of Interest form can be found at: http://help.elsevier.com/app/answers/detail/a_id/286/p/7923.

Submission declaration

Submission of an article implies that the work described has not been published previously (except in the form of an abstract or as part of a published lecture or academic thesis or as an electronic preprint, see <http://www.elsevier.com/postingpolicy>), that it is not under consideration for publication elsewhere, that its publication is approved by all authors and tacitly or explicitly by the responsible authorities where the work was carried out, and that, if accepted, it will not be published elsewhere including electronically in the same form, in English or in any other language, without the written consent of the copyright-holder.

This policy concerns the addition, deletion, or rearrangement of author names in the authorship of accepted manuscripts:

Before the accepted manuscript is published in an online issue: Requests to add or remove an author, or to rearrange the author names, must be sent to the Journal Manager from the corresponding author of the accepted manuscript and must include: (a) the reason the name should be added or removed, or the author names rearranged and (b) written confirmation (e-mail, fax, letter) from all authors that they agree with the addition, removal, or rearrangement. In the case of addition or removal of authors, this should include a confirmation from the author being added or removed. The Journal Manager will forward requests that are not sent by the corresponding author to the corresponding author, who must follow the procedure as described above. Note that: (1) Journal Managers will inform the Journal Editors of any such requests and (2) publication of the accepted manuscript in an online issue is suspended until authorship has been agreed.

After the accepted manuscript is published in an online issue: Any requests to add, delete, or rearrange author names in an article published in an online issue will follow the same policies as noted above and result in a corrigendum.

Copyright

This journal offers authors a choice in publishing their research: Open access and Subscription.

For subscription articles

Upon acceptance of an article, authors will be asked to complete a 'Journal Publishing Agreement' (for more information on this and copyright, see <http://www.elsevier.com/copyright>). An e-mail will be sent to the corresponding author confirming receipt of the manuscript together with a 'Journal Publishing Agreement' form or a link to the online version of this agreement.

Subscribers may reproduce tables of contents or prepare lists of articles including abstracts for internal circulation within their institutions. Permission of the Publisher is required for resale or distribution outside the institution and for all other derivative works, including compilations and translations (please consult <http://www.elsevier.com/permissions>). If excerpts from other copyrighted works are

included, the author(s) must obtain written permission from the copyright owners and credit the source(s) in the article. Elsevier has preprinted forms for use by authors in these cases: please consult <http://www.elsevier.com/permissions>.

For open access articles

Upon acceptance of an article, authors will be asked to complete an 'Exclusive License Agreement' (for more information see <http://www.elsevier.com/OAauthoragreement>). Permitted reuse of open access articles is determined by the author's choice of user license (see <http://www.elsevier.com/openaccesslicenses>).

Retained author rights

As an author you (or your employer or institution) retain certain rights. For more information on author rights for:

Subscription articles please see <http://www.elsevier.com/journal-authors/author-rights-and-responsibilities>.
Open access articles please see <http://www.elsevier.com/OAauthoragreement>.

Role of the funding source

You are requested to identify who provided financial support for the conduct of the research and/or preparation of the article and to briefly describe the role of the sponsor(s), if any, in study design; in the collection, analysis and interpretation of data; in the writing of the report; and in the decision to submit the article for publication. If the funding source(s) had no such involvement then this should be stated.

Funding body agreements and policies

Elsevier has established agreements and developed policies to allow authors whose articles appear in journals published by Elsevier, to comply with potential manuscript archiving requirements as specified as conditions of their grant awards. To learn more about existing agreements and policies please visit <http://www.elsevier.com/fundingbodies>.

Open access

This journal offers authors a choice in publishing their research:

Open access

- Articles are freely available to both subscribers and the wider public with permitted reuse
- An open access publication fee is payable by authors or their research funder

Subscription

- Articles are made available to subscribers as well as developing countries and patient groups through our access programs (<http://www.elsevier.com/access>)
- No open access publication fee

All articles published open access will be immediately and permanently free for everyone to read and download. Permitted reuse is defined by your choice of one of the following Creative Commons user licenses:

Creative Commons Attribution-NonCommercial-ShareAlike (CC BY-NC-SA): for non-commercial purposes, lets others distribute and copy the article, to create extracts, abstracts and other revised versions, adaptations or derivative works of or from an article (such as a translation), to include in a collective work (such as an anthology), to text and data mine the article, as long as they credit the author(s), do not represent the author as endorsing their adaptation of the article, do not modify the article in such a way as to damage the author's honor or reputation, and license their new adaptations or creations under identical terms (CC BY-NC-SA).

Creative Commons Attribution-NonCommercial-NoDerivs (CC BY-NC-ND): for non-commercial purposes, lets others distribute and copy the article, and to include in a collective work (such as an anthology), as long as they credit the author(s) and provided they do not alter or modify the article.

Elsevier has established agreements with funding bodies, <http://www.elsevier.com/fundingbodies>. This ensures authors can comply with funding body open access requirements, including specific user licenses, such as CC BY. Some authors may also be reimbursed for associated publication fees. If you need to comply with your funding body policy, you can apply for the CC BY license after your manuscript is accepted for publication.

To provide open access, this journal has a publication fee which needs to be met by the authors or their research funders for each article published open access. Your publication choice will have no effect on the peer review process or acceptance of submitted articles.

This journal offers authors a choice in publishing their research:

Open Access

- Articles are freely available to both subscribers and the wider public with permitted reuse
- An open access publication fee is payable by authors or their research funder

Subscription

- Articles are made available to subscribers as well as developing countries and patient groups through our access programs (<http://www.elsevier.com/access>)
- No open access publication fee

All articles published open access will be immediately and permanently free for the public to read and download. Permitted reuse is defined by your choice of one of the following Creative Commons user licenses:

Creative Commons Attribution-NonCommercial-ShareAlike (CC BY-NC-SA): for non-commercial purposes, lets others distribute and copy the article, to create extracts, abstracts and other revised versions, adaptations or derivative works of or from an article (such as a translation), to include in a collective work (such as an anthology), to text and data mine the article, as long as they credit the author(s), do not represent the author as endorsing their adaptation of the article, do not modify the article in such a way as to damage the author's honor or reputation, and license their new adaptations or creations under identical terms (CC BY-NC-SA).

Creative Commons Attribution-NonCommercial-NoDerivs (CC BY-NC-ND): for non-commercial purposes, lets others distribute and copy the article, and to include the article in a collective work (such as an anthology), as long as they credit the author(s) and provided they do not alter or modify the article.

Elsevier has established agreements with funding bodies, <http://www.elsevier.com/fundingbodies>. This ensures authors can comply with funding body open access requirements, including specific user licenses, such as CC BY. Some authors may also be reimbursed for associated publication fees. If you need to comply with your funding body policy, you can apply for the CC BY license after your manuscript is accepted for publication.

To provide open access, this journal has a publication fee, which needs to be met by the authors or their research funders for each article published open access. Your publication choice will have no effect on the peer review process or acceptance of submitted articles.

The open access publication fee for this journal is **\$2,500**, excluding taxes. Learn more about Elsevier's pricing policy: <http://www.elsevier.com/openaccesspricing>.

Language (usage and editing services)

Please write your text in good English (American or British usage is accepted, but not a mixture of these). Authors who feel their English language manuscript may require editing to eliminate possible grammatical or spelling errors and to conform to correct scientific English may wish to use the English Language Editing service available from Elsevier's WebShop (<http://webshop.elsevier.com/languageediting/>) or visit our customer support site (<http://support.elsevier.com>) for more information.

Informed consent and patient details

Studies on patients or volunteers require ethics committee approval and informed consent, which should be documented in the paper. Appropriate consents, permissions and releases must be obtained where an author wishes to include case details or other personal information or images of patients and any other individuals in an Elsevier publication. Written consents must be retained by the author and copies of the consents or evidence that such consents have been obtained must be provided to Elsevier on request. For more information, please review the *Elsevier Policy on the Use of Images or Personal Information of Patients or other Individuals*, <http://www.elsevier.com/patient-consent-policy>. Unless

you have written permission from the patient (or, where applicable, the next of kin), the personal details of any patient included in any part of the article and in any supplementary materials (including all illustrations and videos) must be removed before submission.

Submission

The manuscript submission process is online only and when visiting the submission website, authors will be guided stepwise through the process of creating and uploading files. The system automatically converts source files to a single PDF file of the article, which is used in the peer-review process. Please note that even though manuscript source files are converted to PDF files at submission for the review process, these source files are needed for further processing after acceptance. All correspondence, including notification of the Editor's decision and requests for revision, takes place by e-mail removing the need for a paper trail.

Submit your article

Please submit your article via <http://ees.elsevier.com/cpdr/>.

PREPARATION

Use of word processing software

It is important that the file be saved in the native format of the word processor used. The text should be in single-column format. Keep the layout of the text as simple as possible. Most formatting codes will be removed and replaced on processing the article. In particular, do not use the word processor's options to justify text or to hyphenate words. However, do use bold face, italics, subscripts, superscripts etc. When preparing tables, if you are using a table grid, use only one grid for each individual table and not a grid for each row. If no grid is used, use tabs, not spaces, to align columns. The electronic text should be prepared in a way very similar to that of conventional manuscripts (see also the Guide to Publishing with Elsevier: <http://www.elsevier.com/guidepublication>). Note that source files of figures, tables and text graphics will be required whether or not you embed your figures in the text. See also the section on Electronic artwork.

To avoid unnecessary errors you are strongly advised to use the 'spell-check' and 'grammar-check' functions of your word processor.

Article structure

Divide your article into clearly defined sections. Each subsection is given a brief heading. Each heading should appear on its own separate line. Subsections should be used as much as possible when cross-referencing text: refer to the subsection by heading as opposed to simply aforementioned text.

The objectives of the work should be clearly stated, and an adequate background should be provided. Avoid a detailed literature survey or a summary of the results.

Results should be reported in a clear and concise manner

Discussion sections should explore the significance of the presented results, and should not be a repetition of the Results section. A combined Results and Discussion section is often appropriate. Avoid extensive citations and discussion of published literature.

Conclusions

The main conclusions of the study may be presented in a short Conclusions section, which may stand alone or form a subsection of a Discussion or Results and Discussion section.

Appendices

If there is more than one appendix, they should be identified as A, B, etc. Formulae and equations in appendices should be given separate numbering: Eq. (A.1), Eq. (A.2), etc.; in a subsequent appendix, Eq. (B.1) and so on. Similarly for tables and figures: Table A.1; Fig. A.1, etc.

Essential Title Page Information

• **Title.** Titles should be concise and informative. Titles are often used in information-retrieval systems. Avoid abbreviations and formulae whenever possible.

• **Author names and affiliations.** Where the family name may be ambiguous (e.g., a double name), this should be clearly indicated. Authors' affiliations (where the work was done) should be listed below the respective names of each author. Affiliations should be indicated with a lower-case superscript letter immediately after the author's name and in front of the appropriate address. The full postal address of each affiliation should be provided, including the country name and, if available, the e-mail address of each author.

• **Corresponding author.** Clearly indicate who will handle correspondence at all stages of refereeing, publication, and post-publication. **Complete phone numbers (with country and area code), e-mail addresses, and the complete postal address should be mentioned. Contact details must be kept up to date by the corresponding author.**

• **Present/permanent address.** If an author has moved since the work described in the article was done, or was visiting at the time, a 'Present address' (or 'Permanent address') may be indicated as a footnote to that author's name. The address at which the author actually did the work must be retained as the main, affiliation address. Superscript Arabic numerals are used for such footnotes.

Abstract

A concise and factual abstract is required. The abstract should state briefly the purpose of the research, the principal results and major conclusions. An abstract is often presented separately from the article, so it must be able to stand alone. For this reason, References should be avoided, but if essential, then the author(s) and year(s) must be cited. Non-standard or uncommon abbreviations should be avoided, but if essential, they must be defined at their first mention within the abstract itself.

Acknowledgements should be collated in a separate section at the end of the article, before the references. Do not include them on the title page, as a footnote to the title or otherwise. Individuals who provided help during the research (e.g., providing language help, writing assistance or proof reading the article, etc.) should be listed in this section.

Units

Follow internationally accepted rules and conventions: use the international system of units (SI). If other units are mentioned, please give their equivalent in SI.

Footnotes

Footnotes should be used sparingly. Number them consecutively throughout the article. Many word processors can build footnotes into the text, and this feature may be used. Otherwise, please indicate the position of footnotes in the text and list the footnotes themselves separately at the end of the article. Do not include footnotes in the Reference list.

Artwork

General points

- Original artwork should be displayed with uniform lettering and sizing
- Embed the used fonts if the application provides that option.
- Aim to use the following fonts in your illustrations: Arial, Courier, Times New Roman, Symbol, or use fonts that look similar.
- Number the illustrations according to their sequence in the text.
- Use a logical naming convention for your artwork files.
- Provide a separate caption for each illustration.
- Size the illustrations close to the desired dimensions of the printed version.
- Submit each illustration as a separate file.

A detailed guide on electronic artwork is available on our website:

<http://www.elsevier.com/artworkinstructions>

You are urged to visit this site; some excerpts from the detailed information are given here.

Formats

If your electronic artwork is created in a Microsoft Office application (Word, PowerPoint, Excel) then please supply a copy 'as is' in its original, uncompressed document format.

Regardless of the application used, other than Microsoft Office, when your electronic artwork is finalized, please 'Save as' or convert the images to one of the following formats (note the resolution requirements for line drawings, halftones, and line/halftone combinations given below):

EPS (or PDF): Vector drawings, embed all used fonts.

TIFF (or JPEG): Color or gray-scale photographs (halftones), keep to a minimum of 300 dpi.

TIFF (or JPEG): Bitmapped (pure black & white pixels) line drawings, keep to a minimum of 1000 dpi.

TIFF (or JPEG): Combinations bitmapped line/half-tone (color or grayscale), keep to a minimum of 500 dpi.

Please do not:

- Supply files that are optimized for screen use (e.g., GIF, BMP, PICT, WPG); these typically have a low number of pixels and limited set of colors;
- Supply files that are too low in resolution;
- Submit graphics that are disproportionately large for the content.

Color Artwork

Please make sure that artwork files are in an acceptable format (TIFF (or JPEG), EPS (or PDF), or MS Office files) and of sufficient resolution. If, together with your accepted article, you submit usable color figures then Elsevier will ensure, at no additional charge, that these figures will appear in color on the Web (e.g., ScienceDirect and other sites) regardless of whether or not these illustrations are reproduced in color in the printed version. **For color reproduction in print, you will receive information regarding the costs from Elsevier after receipt of your accepted article.** Please indicate your preference for color: in print or on the Web only. For further information on the preparation of electronic artwork, please see <http://www.elsevier.com/artworkinstructions>.

Please note: Because of technical complications which can arise by converting color figures to 'gray scale' (for the printed version should you not opt for color in print), usable black and white versions of all the color illustrations should also be submitted.

Illustrations services

Elsevier's WebShop (<http://webshop.elsevier.com/illustrationservices>) offers Illustration Services to authors who are prepared to submit a manuscript, but are concerned about the quality of the accompanying images. Elsevier's expert illustrators can produce scientific, technical and medical-style images, as well as a full range of charts, tables and graphs. Image 'polishing' is also available, where our illustrators take your image(s) and improve them to a professional standard. Please visit the website to find out more.

Figure Captions

Ensure that each illustration has a caption. Supply captions separately, not attached to the figure. A caption should include a brief title (**not** on the figure itself) and a description of the illustration. Keep text in the illustrations themselves to a minimum, but explain all symbols and abbreviations used.

Tables

Please submit tables as editable text and not as images. Tables can be placed either next to the relevant text in the article, or on separate page(s) at the end. Number tables consecutively in accordance with their appearance in the text and place any table notes below the table body. Be sparing in the use of tables and ensure that the data presented in them do not duplicate results described elsewhere in the article. Please avoid using vertical rules.

References

Citation in text

Please ensure that every reference cited in the text is also present in the reference list (and vice versa). Any references cited in the abstract must be given in full. Unpublished results and personal communications are not recommended in the reference list, but may be mentioned in the text. If these references are included in the reference list they should follow the standard reference style of the journal and should include a substitution of the publication date with either 'Unpublished results' or 'Personal communication'. Citation of a reference as 'in press' implies that the item has been accepted for publication.

Reference links

Increased discoverability of research and high quality peer review are ensured by online links to the sources cited. In order to allow us to create links to abstracting and indexing services, such as Scopus, CrossRef and PubMed, please ensure that data provided in the references are correct. Please note that incorrect surnames, journal/book titles, publication year and pagination may prevent link creation. When copying references, please be careful as they may already contain errors. Use of the DOI is encouraged.

Web references

As a minimum, the full URL should be given and the date when the reference was last accessed. Any further information, if known (DOI, author names, dates, reference to a source publication, etc.), should also be given. Web references can be listed separately (e.g., after the reference list) under a different heading if desired, or can be included in the reference list.

References in a special issue

Please ensure that the words 'this issue' are added to any references in the list (and any citations in the text) to other articles in the same Special Issue.

Reference style

Text: Indicate references by superscript numbers in the text. The actual authors can be referred to, but the reference number(s) must always be given.

List: Number the references in the list in the order in which they appear in the text.

Examples:

Reference to a journal publication:

1. Van der Geer J, Hanraads JAJ, Lupton RA. The art of writing a scientific article. *J Sci Commun* 2010;**163**:51–9.

Reference to a book:

2. Strunk Jr W, White EB. *The elements of style*. 4th ed. New York: Longman; 2000.

Reference to a chapter in an edited book:

3. Mettam GR, Adams LB. How to prepare an electronic version of your article. In: Jones BS, Smith RZ, editors. *Introduction to the electronic age*, New York: E-Publishing Inc; 2009, p. 281–304.

Note shortened form for last page number. e.g., 51–9, and that for more than 6 authors the first 6 should be listed followed by 'et al.' For further details you are referred to 'Uniform Requirements for Manuscripts submitted to Biomedical Journals' (*J Am Med Assoc* 1997;**277**:927–34) (see also http://www.nlm.nih.gov/bsd/uniform_requirements.html).

Journal abbreviations source

Journal names should be abbreviated according to the List of Title Word Abbreviations: <http://www.issn.org/services/online-services/access-to-the-ltwa/>.

AUDIOSLIDES

The journal encourages authors to create an AudioSlides presentation with their published article. AudioSlides are brief, webinar-style presentations that are shown next to the online article on ScienceDirect. This gives authors the opportunity to summarize their research in their own words and to help readers understand about the submitted manuscript. More information and examples are available at <http://www.elsevier.com/audioslides>. Authors of accepted submissions will automatically receive an invitation e-mail to create an AudioSlides presentation

Supplementary Data

Elsevier accepts electronic supplementary material to support and enhance scientific research. Supplementary files offer the author additional possibility to publish supporting applications, high-resolution images, background datasets, sound clips, and more. Supplementary files supplied will be published online alongside the electronic version of articles in Elsevier Web products, including ScienceDirect: <http://www.sciencedirect.com>. In order to ensure that your submitted material is directly usable, please provide the data in one of our recommended file formats. Authors should submit material in electronic format together with the article and supply a concise and descriptive caption for each file. For more detailed instructions please visit our artwork instruction pages at <http://www.elsevier.com/artworkinstructions>.

Submission checklist

The following list will be useful during the final checking of an article prior to sending it to the journal for review. Please consult this Guide for Authors for further details of any item.

Ensure that the following items are present:

One author has been designated as the corresponding author with contact details:

- E-mail address
- Full postal address
- Phone numbers

All necessary files have been uploaded, and contain:

- Keywords
- All figure captions
- All tables (including title, description, footnotes)

Further considerations

- Manuscript has been 'spell-checked' and 'grammar-checked'
- References are in the correct format for this journal
- All references mentioned in the Reference list are cited in the text, and vice versa
- Permission has been obtained for use of copyrighted material from other sources (including the Internet)

Printed version of figures (if applicable) in color or black-and-white

- Indicate clearly whether or not color or black-and-white in print is required.
- For reproduction in black-and-white, please supply black-and-white versions of the figures for printing purposes.

For any further information please visit our customer support site at <http://support.elsevier.com>.

AFTER ACCEPTANCE

Use of the Digital Object Identifier

The Digital Object Identifier (DOI) may be used to cite and link to electronic documents. The DOI consists of a unique alpha-numeric character string which is assigned to a document by the publisher upon the initial electronic publication. The assigned DOI never changes. Therefore, it is an ideal medium for citing a document, particularly 'Articles in press' because they have not yet received their full bibliographic information. Example of a correctly given DOI (in URL format; here an article in the journal *Physics Letters B*):

<http://dx.doi.org/10.1016/j.physletb.2010.09.059>

When you use a DOI to create links to documents on the web, the DOIs are guaranteed never to change.

Online proof correction

Corresponding authors will receive an e-mail with a link to our online proofing system, allowing annotation and correction of proofs online. The environment is similar to MS Word: in addition to editing text, you can also comment on figures/tables and answer questions from the Copy Editor. Web-based proofing provides a faster and less error-prone process by allowing you to directly type your corrections, eliminating the potential introduction of errors.

If preferred, you can still choose to annotate and upload your edits on the PDF version. All instructions for proofing will be given in the e-mail we send to authors, including alternative methods to the online version and PDF.

We will do everything possible to get your article published quickly and accurately. Please use this proof only for checking the typesetting, editing, completeness and correctness of the text, tables and figures. Significant changes to the article as accepted for publication will only be considered at this stage with permission from the Editor. It is important to ensure that all corrections are sent back to us in one communication. Please check carefully before replying, as inclusion of any subsequent corrections cannot be guaranteed. Proofreading is solely your responsibility.

Author Inquiries

For inquiries related to the submission of articles (including electronic submission) please visit this journal's homepage. For detailed instructions on the preparation of electronic artwork, please visit <http://www.elsevier.com/artworkinstructions>. Contact details for questions arising after acceptance of an article, especially those relating to proofs, will be provided by the publisher. You can track accepted articles at <http://www.elsevier.com/trackarticle>. You can also check our Author FAQs at <http://www.elsevier.com/authorFAQ> and/or contact Customer Support via <http://support.elsevier.com>.

© Copyright 2014 Elsevier | <http://www.elsevier.com>