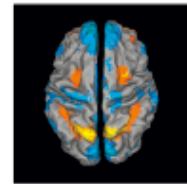




TABLE OF CONTENTS

●	Description	p.1
●	Audience	p.2
●	Impact Factor	p.2
●	Abstracting and Indexing	p.2
●	Editorial Board	p.2
●	Guide for Authors	p.5

Brain Research



ISSN: 0006-8993

DESCRIPTION

Brain Research publishes papers reporting interdisciplinary investigations of **nervous system structure** and **function** that are of general interest to the international community of neuroscientists. As is evident from the journal's name, its scope is broad, ranging from cellular and molecular studies through systems neuroscience, cognition and disease. Invited reviews are also published; suggestions for and inquiries about potential reviews are welcomed.

With the appearance of the final issue of the 2011 subscription, Vol. 67/1-2 (24 June 2011), *Brain Research Reviews* has ceased publication as a distinct journal separate from *Brain Research*. Review articles accepted for *Brain Research* are now published in that journal.

N.B. Review articles are by invitation only; inquiries and suggestions for reviews should be directed to the *Brain Research* [Editorial Office](mailto:bres@elsevier.com) (bres@elsevier.com).

In the journal's Table of Contents, published papers will be shown under one of the Section titles listed below. Authors will be given the opportunity to choose the most appropriate section upon manuscript submission.

SECTIONS

• **Cell Biology, Signaling and Synaptic Transmission**

Senior Editors: Leonard K. Kaczmarek (New Haven, CT, USA)

Studies investigating the cellular, molecular and genetic bases of structure, function and signaling (both intracellular and intercellular) in nervous systems.

• **Development, Degeneration and Regeneration, and Aging**

Senior Editors: Fen-Biao Gao (Worcester, MA, USA), Michael E. Selzer (Philadelphia, PA, USA), Flora M. Vaccarino (New Haven, CT, USA)

Studies concerning neuronal and glial development and the formation of the nervous system, molecular and cellular aspects of degeneration and regeneration, and changes associated with the aging brain.

• **Neuroscience and Behavior**

Senior Editors: Gary Aston-Jones (Charleston, SC, USA), Mary Heinricher (Portland, OR, USA), Barry Waterhouse (Philadelphia, PA, USA)

Studies concerning structure and organization of neural circuits, sensory and motor systems, internal regulatory systems and the control of behaviors.

• **Cognition and Computation**

Senior Editors: Erich Schröger (Leipzig, Germany), Maria Natasha Rajah (Verdun, Quebec, Canada), Christina L. Williams (Durham, NC, USA)

Studies of the neural mechanisms of cognition and behavior in humans and animal models including basic behaviors and higher mental functions; as well as studies dealing with realistic simulation, analysis and prediction of the structure and functions of nervous systems and individual neuronal and glial elements within nervous systems.

• **Neurobiology of Disease**

Senior Editors: Lorraine Iacovitti (Philadelphia, PA, USA), Jae-Young Koh (Seoul, Korea), Ramesh Raghupathi (Philadelphia, PA, USA), Peter H. Reinhart (Boston, MA, USA), J. Paul Taylor (Memphis, TN, USA)

Studies whose primary focus is on clinically diseased nervous systems or disease models, including molecular, cellular, systems and behavioral approaches and analysis of therapeutic interventions.

• **Reviews**

Senior Editor: Irwin B. Levitan (Philadelphia, PA, USA)

Invited reviews on all aspects of nervous system structure and function. The editors welcome suggestions for specific review topics.

AUDIENCE

Neuroscientists, neurophysiologists, neuroendocrinologists, neurochemists, neuroanatomists, neuropharmacologists, neurologists.

IMPACT FACTOR

2013: 2.828 © Thomson Reuters Journal Citation Reports 2014

ABSTRACTING AND INDEXING

BIOSIS
Elsevier BIOBASE
Chemical Abstracts
Current Contents/Life Sciences
MEDLINE®
EMBASE
Pascal et Francis (INST-CNRS)
PsycINFO Psychological Abstracts
RIS (Reference Update)
Scopus

EDITORIAL BOARD

Editor-in-Chief

Irwin B. Levitan, Philadelphia, Pennsylvania, USA

Deputy Editor-in-Chief

Gary Aston-Jones, Charleston, South Carolina, USA

J. Paul Taylor, Memphis, Tennessee, USA

Senior Editors

Fen-Biao Gao, Worcester, Massachusetts, USA

Mary Heinricher, Portland, Oregon, USA

Lorraine Iacovitti, Philadelphia, Pennsylvania, USA

Leonard Kaczmarek, New Haven, Connecticut, USA
Anthony E. Kline, Pittsburgh, Pennsylvania, USA
Jae-Young Koh, Seoul, South Korea
Ramesh Raghupathi, Philadelphia, Pennsylvania, USA
Maria Natasha Rajah, Verdun, Quebec, Canada
Peter Reinhart, Cambridge, Massachusetts, USA
Erich Schröger, Leipzig, Germany
Michael Selzer, Philadelphia, Pennsylvania, USA
Flora Vaccarino, New Haven, Connecticut, USA
Barry Waterhouse, Philadelphia, Pennsylvania, USA
Christina Williams, Durham, North Carolina, USA

Editorial Board

S. Ackerman, Bar Harbor, Maine, USA
C. Alain, Toronto, Ontario, Canada
K. Alho, Helsinki, Finland
C.J. Aoki, New York, New York, USA
L.H.M.C. Arckens, Leuven, Belgium
E.C. Azmitia, New York, New York, USA
F. Barceló, Palma de Mallorca, Spain
R.T. Bartus, San Diego, California, USA
M. Baudry, Los Angeles, California, USA
R.J. Bodnar, Flushing, New York, USA
D. Boire, Quebec, Quebec, Canada
C. Borlongan, Tampa, Florida, USA
P. Chan, Beijing, China
J.D. Cohen, Princeton, New Jersey, USA
J.F. Cryan, Cork, Ireland
C.G. Cusick, New Orleans, Louisiana, USA
M. Dragunow, Auckland Mail Centre, Auckland, New Zealand
S. Einheber, New York, New York, USA
P. Emson, Babraham, Cambridge, UK
P. Gabbott, Milton Keynes, Bucks, UK
C.M. Gall, Irvine, California, USA
L-M. Garcia-Segura, Madrid, Spain
F. Georges, Bordeaux Cedex, France
A. Gintzler, Brooklyn, New York, USA
U. Heinemann, Berlin, Germany
T.L. Hodgson, Exeter, UK
T. Hökfelt, Stockholm, Sweden
B.L. Jacobs, Princeton, New Jersey, USA
J. Kaiser, Frankfurt, Germany
L.A. Krubitzer, Davis, California, USA
J.C. LaManna, Cleveland, Ohio, USA
C. Lance-Jones, Pittsburgh, Pennsylvania, USA
J.D. Levine, San Francisco, California, USA
E.H. Lo, Charlestown, Massachusetts, USA
G. Lubec, Vienna, Austria
C.L. Masters, Melbourne, Victoria, Australia
J.F. McGinty, Charleston, South Carolina, USA
D. Morilak, San Antonio, Texas, USA
E.J. Mufson, Chicago, Illinois, USA
K.A. Nave, Göttingen, Germany
E.J. Nestler, MD, PhD, New York, New York, USA
R.L. Neve, Belmont, Massachusetts, USA
K. Noguchi, Hyogo, Japan
J. Oberdick, Columbus, Ohio, USA
K.C.H. Pang, East Orange, New Jersey, USA
G.W. Pasternak, New York, New York, USA
G. Perry, San Antonio, Texas, USA
P.M. Pilowsky, Sydney, New South Wales, Australia
R. Pinaud, Rochester, New York, USA
J. Raber, Portland, Oregon, USA
M.G.P. Rosa, Clayton, Australia
A. Ryabinin, Portland, Oregon, USA
J. Rüsseler, Magdeburg, Germany
K. Schilling, Bonn, Germany

C. Schmitz, Maastricht, Netherlands
R.S. Sloviter, Tucson, Arizona, USA
D.A. Steindler, Gainesville, Florida, USA
R.L. Stornetta, Charlottesville, Virginia, USA
M. Tohyama, Suita-Shi, Osaka, Japan
D. Trotti, Philadelphia, Pennsylvania, USA
L.L. Uphouse, Denton, Texas, USA
E.J. Van Bockstaele, Philadelphia, Pennsylvania, USA
J.C. Vickers, Hobart, Tasmania, Australia
M.W. Vogel, Baltimore, Maryland, USA
V. Walsh, MD, London, England, UK
X. Wang, Charlestown, Massachusetts, USA
I.S. Zagon, Hershey, Pennsylvania, USA
X. Zhang, Shanghai, China
J. Zuo, Memphis, Tennessee, USA

GUIDE FOR AUTHORS

INTRODUCTION

Brain Research publishes papers reporting interdisciplinary investigations of nervous system structure and function that are of general interest to the international community of neuroscientists. As is evident from the journals name, its scope is broad, ranging from cellular and molecular studies through systems neuroscience, cognition and disease. Invited reviews are also published; suggestions for and inquiries about potential reviews are welcomed.

Note: With the appearance of the final issue of the 2011 subscription, Vol. 67/1-2 (24 June 2011), *Brain Research Reviews* has ceased publication as a distinct journal separate from *Brain Research*. Review articles accepted for *Brain Research* are now published in that journal.

In the journals Table of Contents, published papers will be shown under one of the Section titles listed (in bold type) below. Authors will be given the opportunity to choose the most appropriate section upon manuscript submission.

SECTIONS

Cell Biology, Signaling and Synaptic Transmission

Senior Editors: Leonard K. Kaczmarek (New Haven, CT, USA)

Studies investigating the cellular, molecular and genetic bases of structure, function and signaling (both intracellular and intercellular) in nervous systems.

Cognition and Computation

Senior Editors: Erich Schröger (Leipzig, Germany), Maria Natasha Rajah (Verdun, Quebec, Canada), Christina L. Williams (Durham, NC, USA),

Studies of the neural mechanisms of cognition and behavior in humans and animal models including basic behaviors and higher mental functions; as well as studies dealing with realistic simulation, analysis and prediction of the structure and functions of nervous systems and individual neuronal and glial elements within nervous systems.

Development, Degeneration and Regeneration, and Aging

Senior Editors: Fen-Biao Gao (Worcester, MA, USA), Michael E. Selzer (Philadelphia, PA, USA), Flora M. Vaccarino (New Haven, CT, USA)

Studies concerning neuronal and glial development and the formation of the nervous system, molecular and cellular aspects of degeneration and regeneration, and changes associated with the aging brain.

Neurobiology of Disease

Senior Editors: Lorraine Iacovitti (Philadelphia, PA, USA), Anthony E. Kline (Pittsburgh, PA, USA), Jae-Young Koh (Seoul, Korea), Ramesh Raghupathi (Philadelphia, PA, USA), Peter H. Reinhart (Boston, MA, USA), J. Paul Taylor (Memphis, TN, USA)

Studies whose primary focus is on clinically diseased nervous systems or disease models, including molecular, cellular, systems and behavioral approaches and analysis of therapeutic interventions.

Systems Neuroscience and Behavior

Senior Editors: Gary Aston-Jones (Charleston, SC, USA), Mary Heinricher (Portland, OR, USA), Barry Waterhouse (Philadelphia, PA, USA)

Studies concerning structure and organization of neural circuits, sensory and motor systems, internal regulatory systems and the control of behaviors.

Reviews

Senior Editor: Irwin B. Levitan (Philadelphia, PA, USA)

Invited reviews on all aspects of nervous system structure and function. The editors welcome suggestions for specific review topics.

TYPES OF PAPERS

1. **Research Reports** reporting results of original fundamental research in any branch of the brain sciences. Papers describing new methods or significant developments of recognised methods which provide significant insight into the structure or function of the nervous system, the pathophysiology of a disease, or its treatment may also be submitted. Articles should be written in sufficient detail to allow others to verify/replicate the described methods.

2. **Reviews:** Reviews are by invitation only. Inquiries and suggestions for reviews should be directed to the *Brain Research* Editorial Office (bres@elsevier.com).

Brain Research will also regularly publish **thematic special issues** highlighting important new developments in neuroscience research.

The Neuroscience Peer Review Consortium

Brain Research is a member of the Neuroscience Peer Review Consortium (NPRC). The NPRC has been formed to reduce the time expended and, in particular, the duplication of effort by, and associated burden on reviewers involved in the peer review of original neuroscience research papers. It is an alliance of neuroscience journals that have agreed to accept manuscript reviews from other Consortium journals. By reducing the number of times that a manuscript is reviewed, the Consortium will reduce the load on reviewers and Editors, and speed the publication of research results.

If a manuscript has been rejected by another journal in the Consortium, authors can submit the manuscript to *Brain Research* and indicate that the referees' reports from the first journal be made available to the Editors of *Brain Research*.

It is the authors' decision as to whether or not to indicate that a set of referee's reports should be forwarded from the first journal to *Brain Research*. If an author does not wish for this to happen, the manuscript can be submitted to *Brain Research* without reference to the previous submission. No information will be exchanged between journals except at the request of authors. However, if the original referees' reports suggested that the paper is of high quality, but not suitable for the first journal, then it will often be to an author's advantage to indicate that referees' reports should be made available.

Authors should revise the original submission in accordance with the first journal's set of referee reports, reformat the paper to *Brain Research's* specification and submit the paper to *Brain Research* with a covering letter describing the changes that have been made, and informing the Editors that the authors will ask for the referee's reports to be forwarded from the first Consortium journal. The authors then must contact the first journal, and ask that reviews be forwarded, indicating they have submitted to *Brain Research*, and providing the new manuscript ID number.

The Editors of *Brain Research* will use forwarded referees' reports at their discretion. The Editors may use the reports directly to make a decision, or they may request further reviews if they feel such are necessary.

Visit <http://nprc.incf.org> for a list of Consortium journals, as well as further information on the scheme.

Contact Details for submission

Submission of manuscripts to *Brain Research* is entirely online at <http://ees.elsevier.com/bres>. Queries about the submission or editorial processes may be directed to the Brain Research Editorial Office, Elsevier, 525 B Street, Suite 1800, San Diego, CA 92101-4495, USA; Fax: (1)-619-699.6850, Email: bres@elsevier.com

BEFORE YOU BEGIN

Ethics in publishing

For information on Ethics in publishing and Ethical guidelines for journal publication see <http://www.elsevier.com/publishingethics> and <http://www.elsevier.com/journal-authors/ethics>.

Policy and ethics

The work described in your article must have been carried out in accordance with *The Code of Ethics of the World Medical Association (Declaration of Helsinki) for experiments involving humans* <http://www.wma.net/en/30publications/10policies/b3/index.html>; EC Directive 86/609/EEC

for animal experiments http://ec.europa.eu/environment/chemicals/lab_animals/legislation_en.htm; Uniform Requirements for manuscripts submitted to Biomedical journals <http://www.icmje.org>. This must be stated at an appropriate point in the article.

For other policy issues, authors are referred to the policy guidelines of the Society for Neuroscience (see their website <http://www.jneurosci.org/misc/itoa.shtml>).

Conflict of interest

All authors are requested to disclose any actual or potential conflict of interest including any financial, personal or other relationships with other people or organizations within three years of beginning the submitted work that could inappropriately influence, or be perceived to influence, their work. See also <http://www.elsevier.com/conflictsofinterest>. Further information and an example of a Conflict of Interest form can be found at: http://help.elsevier.com/app/answers/detail/a_id/286/p/7923.

Submission declaration and verification

Submission of an article implies that the work described has not been published previously (except in the form of an abstract or as part of a published lecture or academic thesis or as an electronic preprint, see <http://www.elsevier.com/postingpolicy>), that it is not under consideration for publication elsewhere, that its publication is approved by all authors and tacitly or explicitly by the responsible authorities where the work was carried out, and that, if accepted, it will not be published elsewhere in the same form, in English or in any other language, including electronically without the written consent of the copyright-holder. To verify originality, your article may be checked by the originality detection service CrossCheck <http://www.elsevier.com/editors/plagdetect>.

Contributors

Each author is required to declare his or her individual contribution to the article: all authors must have materially participated in the research and/or article preparation, so roles for all authors should be described. The statement that all authors have approved the final article should be true and included in the disclosure.

Addition, deletion, or rearrangement of author names in the authorship of accepted manuscripts
Before the accepted manuscript is published in an online issue Requests to add or remove an author, or to rearrange the author names, must be sent to the Journal Manager from the corresponding author of the accepted manuscript and must include: The reason the name should be added or removed or the author names rearranged. Written confirmation (email, fax, letter) from all authors that they agree with the addition, removal or rearrangement. In the case of addition or removal of authors, this includes confirmation from the author being added or removed.

Requests that are not sent by the corresponding author will be forwarded by the Journal Manager to the corresponding author, who must follow the procedure as described above. Note that: Journal Managers will inform the Journal Editors of any such requests. Publication of the accepted manuscript in an online issue is suspended until authorship has been agreed.

After the accepted manuscript is published in an online issue

Any requests to add, delete, or rearrange author names in an article published in an online issue will follow the same policies as noted above and result in a corrigendum.

Changes to authorship

This policy concerns the addition, deletion, or rearrangement of author names in the authorship of accepted manuscripts:

Before the accepted manuscript is published in an online issue: Requests to add or remove an author, or to rearrange the author names, must be sent to the Journal Manager from the corresponding author of the accepted manuscript and must include: (a) the reason the name should be added or removed, or the author names rearranged and (b) written confirmation (e-mail, fax, letter) from all authors that they agree with the addition, removal or rearrangement. In the case of addition or removal of authors, this includes confirmation from the author being added or removed. Requests that are not sent by the corresponding author will be forwarded by the Journal Manager to the corresponding author, who must follow the procedure as described above. Note that: (1) Journal Managers will inform the Journal Editors of any such requests and (2) publication of the accepted manuscript in an online issue is suspended until authorship has been agreed.

After the accepted manuscript is published in an online issue: Any requests to add, delete, or rearrange author names in an article published in an online issue will follow the same policies as noted above and result in a corrigendum.

Copyright

This journal offers authors a choice in publishing their research: Open access and Subscription.

For subscription articles

Upon acceptance of an article, authors will be asked to complete a 'Journal Publishing Agreement' (for more information on this and copyright, see <http://www.elsevier.com/copyright>). An e-mail will be sent to the corresponding author confirming receipt of the manuscript together with a 'Journal Publishing Agreement' form or a link to the online version of this agreement.

Subscribers may reproduce tables of contents or prepare lists of articles including abstracts for internal circulation within their institutions. Permission of the Publisher is required for resale or distribution outside the institution and for all other derivative works, including compilations and translations (please consult <http://www.elsevier.com/permissions>). If excerpts from other copyrighted works are included, the author(s) must obtain written permission from the copyright owners and credit the source(s) in the article. Elsevier has preprinted forms for use by authors in these cases: please consult <http://www.elsevier.com/permissions>.

For open access articles

Upon acceptance of an article, authors will be asked to complete an 'Exclusive License Agreement' (for more information see <http://www.elsevier.com/OAauthoragreement>). Permitted reuse of open access articles is determined by the author's choice of user license (see <http://www.elsevier.com/openaccesslicenses>).

Retained author rights

As an author you (or your employer or institution) retain certain rights. For more information on author rights for:

Subscription articles please see <http://www.elsevier.com/journal-authors/author-rights-and-responsibilities>.

Open access articles please see <http://www.elsevier.com/OAauthoragreement>.

Role of the funding source

You are requested to identify who provided financial support for the conduct of the research and/or preparation of the article and to briefly describe the role of the sponsor(s), if any, in study design; in the collection, analysis and interpretation of data; in the writing of the report; and in the decision to submit the article for publication. If the funding source(s) had no such involvement then this should be stated.

Funding body agreements and policies

Elsevier has established agreements and developed policies to allow authors whose articles appear in journals published by Elsevier, to comply with potential manuscript archiving requirements as specified as conditions of their grant awards. To learn more about existing agreements and policies please visit <http://www.elsevier.com/fundingbodies>.

Open access

This journal offers authors a choice in publishing their research:

Open access

- Articles are freely available to both subscribers and the wider public with permitted reuse
- An open access publication fee is payable by authors or their research funder

Subscription

- Articles are made available to subscribers as well as developing countries and patient groups through our access programs (<http://www.elsevier.com/access>)
- No open access publication fee

All articles published open access will be immediately and permanently free for everyone to read and download. Permitted reuse is defined by your choice of one of the following Creative Commons user licenses:

Creative Commons Attribution (CC BY): lets others distribute and copy the article, to create extracts, abstracts, and other revised versions, adaptations or derivative works of or from an article (such as a translation), to include in a collective work (such as an anthology), to text or data mine the article, even for commercial purposes, as long as they credit the author(s), do not represent the author as endorsing their adaptation of the article, and do not modify the article in such a way as to damage the author's honor or reputation.

Creative Commons Attribution-NonCommercial-ShareAlike (CC BY-NC-SA): for non-commercial purposes, lets others distribute and copy the article, to create extracts, abstracts and other revised versions, adaptations or derivative works of or from an article (such as a translation), to include in a collective work (such as an anthology), to text and data mine the article, as long as they credit the author(s), do not represent the author as endorsing their adaptation of the article, do not modify the article in such a way as to damage the author's honor or reputation, and license their new adaptations or creations under identical terms (CC BY-NC-SA).

Creative Commons Attribution-NonCommercial-NoDerivs (CC BY-NC-ND): for non-commercial purposes, lets others distribute and copy the article, and to include in a collective work (such as an anthology), as long as they credit the author(s) and provided they do not alter or modify the article.

To provide open access, this journal has a publication fee which needs to be met by the authors or their research funders for each article published open access.

Your publication choice will have no effect on the peer review process or acceptance of submitted articles.

The open access publication fee in this journal is **\$1,800**, excluding taxes. Learn more about Elsevier's pricing policy: <http://www.elsevier.com/openaccesspricing>.

Language (usage and editing services)

Please write your text in good English (American or British usage is accepted, but not a mixture of these). Authors who feel their English language manuscript may require editing to eliminate possible grammatical or spelling errors and to conform to correct scientific English may wish to use the English Language Editing service available from Elsevier's WebShop (<http://webshop.elsevier.com/languageediting/>) or visit our customer support site (<http://support.elsevier.com>) for more information.

Submission

Our online submission system guides you stepwise through the process of entering your article details and uploading your files. The system converts your article files to a single PDF file used in the peer-review process. Editable files (e.g., Word, LaTeX) are required to typeset your article for final publication. All correspondence, including notification of the Editor's decision and requests for revision, is sent by e-mail.

Submit your article

Please submit your article via <http://ees.elsevier.com/bres>

Section, Senior Editor and Reviewers

Authors will be asked during manuscript submission to select a section of the journal, and a senior editor from that section whom they consider most appropriate to edit their manuscript. While every effort will be made to honor authors' selections, the assignment to a handling editor will be made by the Editor-in-Chief. Please submit, with the manuscript, the names, addresses and email addresses of 3 potential reviewers. Note that the handling editor retains the sole right to decide whether or not the suggested reviewers are used.

Referees

Please submit the names and institutional e-mail addresses of several potential referees. For more details, visit our [Support site](#). Note that the editor retains the sole right to decide whether or not the suggested reviewers are used.

Additional information

Cover illustrations: Authors are encouraged to submit visually and scientifically interesting figure(s) representative of their data, though not necessarily as they appear in the manuscript, for potential cover illustrations (see specific instructions for submission of cover art under *PREPARATION / Color Artwork below*). The use of illustrations for journal covers is at the discretion of the Editors; only those

related to articles accepted for publication will be considered. At the end of each year, all published covers will automatically be considered in a competition for the year's best cover illustration, and will be judged on their aesthetic value and scientific interest. The author(s) of the winning image will receive US\$ 500 from Elsevier.

PREPARATION

Use of word processing software

It is important that the file be saved in the native format of the word processor used. The text should be in single-column format. Keep the layout of the text as simple as possible. Most formatting codes will be removed and replaced on processing the article. In particular, do not use the word processor's options to justify text or to hyphenate words. However, do use bold face, italics, subscripts, superscripts etc. When preparing tables, if you are using a table grid, use only one grid for each individual table and not a grid for each row. If no grid is used, use tabs, not spaces, to align columns. The electronic text should be prepared in a way very similar to that of conventional manuscripts (see also the Guide to Publishing with Elsevier: <http://www.elsevier.com/guidepublication>). Note that source files of figures, tables and text graphics will be required whether or not you embed your figures in the text. See also the section on Electronic artwork.

To avoid unnecessary errors you are strongly advised to use the 'spell-check' and 'grammar-check' functions of your word processor.

Article structure

Subdivision

Divide your article into clearly defined and numbered sections (e.g. Abstract, 1. Introduction, 2. Results, 3. Discussion, 4. Experimental Procedure, Acknowledgements, References). Subsections should be numbered 1.1 (then 1.1.1, 1.1.2, ...), 1.2, etc. (the abstract is not included in section numbering). Use this numbering also for internal cross-referencing: do not just refer to "the text". Any subsection may be given a brief heading. Each heading should appear on its own separate line.

Introduction

State the objectives of the work and provide relevant background information. Published studies should be described concisely, and be cited appropriately.

Results

The results should be described clearly and in logical order without extended discussion of their significance. Results should usually be presented descriptively and be supplemented by photographs or diagrams.

Discussion

The results of the research should be discussed in the context of other relevant published work; Extensive citations and discussion of published literature should be avoided. The main conclusions of the study may be presented in a short Conclusions section, which may stand alone or form a subsection of a Discussion section.

Experimental Procedure

This section should contain all the details necessary to reproduce the experiments. Avoid re-describing methods already published; only relevant modifications should be included in the text.

Essential title page information

- **Title.** Concise and informative. Titles are often used in information-retrieval systems. Avoid abbreviations and formulae where possible.
- **Author names and affiliations.** Where the family name may be ambiguous (e.g., a double name), please indicate this clearly. Present the authors' affiliation addresses (where the actual work was done) below the names. Indicate all affiliations with a lower-case superscript letter immediately after the author's name and in front of the appropriate address. Provide the full postal address of each affiliation, including the country name and, if available, the e-mail address of each author.
- **Corresponding author.** Clearly indicate who will handle correspondence at all stages of refereeing and publication, also post-publication. **Ensure that phone numbers (with country and area code) are provided in addition to the e-mail address and the complete postal address. Contact details must be kept up to date by the corresponding author.**
- **Present/permanent address.** If an author has moved since the work described in the article was done, or was visiting at the time, a 'Present address' (or 'Permanent address') may be indicated as a footnote to that author's name. The address at which the author actually did the work must be retained as the main, affiliation address. Superscript Arabic numerals are used for such footnotes.

Abstract

The abstract should state briefly (in no more than 250 words) the purpose of the research, the principal results and major conclusions. An abstract is often presented separately from the article, so it must be able to stand alone. For this reason, References should be avoided, but if essential, then cite the author(s) and year(s). Also, non-standard or uncommon abbreviations should be avoided, but if essential they must be defined at their first mention in the abstract itself.

Graphical abstract

Although a graphical abstract is optional, its use is encouraged as it draws more attention to the online article. The graphical abstract should summarize the contents of the article in a concise, pictorial form designed to capture the attention of a wide readership. Graphical abstracts should be submitted as a separate file in the online submission system. Image size: Please provide an image with a minimum of 531 × 1328 pixels (h × w) or proportionally more. The image should be readable at a size of 5 × 13 cm using a regular screen resolution of 96 dpi. Preferred file types: TIFF, EPS, PDF or MS Office files. See <http://www.elsevier.com/graphicalabstracts> for examples.

Authors can make use of Elsevier's Illustration and Enhancement service to ensure the best presentation of their images and in accordance with all technical requirements: [Illustration Service](#).

Highlights

Highlights are mandatory for this journal. They consist of a short collection of bullet points that convey the core findings of the article and should be submitted in a separate editable file in the online submission system. Please use 'Highlights' in the file name and include 3 to 5 bullet points (maximum 85 characters, including spaces, per bullet point). See <http://www.elsevier.com/highlights> for examples.

Keywords

Immediately after the abstract, provide a maximum of 6 keywords, using American spelling and avoiding general and plural terms and multiple concepts (avoid, for example, "and", "of"). Be sparing with abbreviations: only abbreviations firmly established in the field may be eligible. These keywords will be used for indexing purposes.

Abbreviations

Define abbreviations that are not standard in this field in a footnote to be placed on the first page of the article. Such abbreviations that are unavoidable in the abstract must be defined at their first mention there, as well as in the footnote. Ensure consistency of abbreviations throughout the article.

Acknowledgements

Collate acknowledgements in a separate section at the end of the article before the references and do not, therefore, include them on the title page, as a footnote to the title or otherwise. List here those individuals who provided help during the research (e.g., providing language help, writing assistance or proof reading the article, etc.).

Units

Follow internationally accepted rules and conventions: use the international system of units (SI). If other units are mentioned, please give their equivalent in SI.

Database linking

Elsevier encourages authors to connect articles with external databases, giving their readers one-click access to relevant databases that help to build a better understanding of the described research. Please refer to relevant database identifiers using the following format in your article: Database: xxxx (e.g., TAIR: AT1G01020; CCDC: 734053; PDB: 1XFN). See <http://www.elsevier.com/databaselinking> for more information and a full list of supported databases.

Minimal Data Standards

Resources reported in neuroscience articles often lack sufficient detail to enable reproducibility or reuse. To facilitate resource identification in the neuroscience literature, we recommend to include relevant accession numbers and identifiers in your article, which will be converted into links to corresponding data repositories and embedded enrichments once the article is published and appears on SciencDirect. Please consider inclusion of GenBank accession numbers, antibody identifiers, species specific nomenclatures, and software identifiers in the method section of your article. The complete set of recommendations with detailed instructions is available at: <http://www.elsevier.com/about/content-innovation/minimal-data-standards>

Artwork

Electronic artwork

General points

- Make sure you use uniform lettering and sizing of your original artwork.
- Embed the used fonts if the application provides that option.
- Aim to use the following fonts in your illustrations: Arial, Courier, Times New Roman, Symbol, or use fonts that look similar.
- Number the illustrations according to their sequence in the text.
- Use a logical naming convention for your artwork files.
- Provide captions to illustrations separately.
- Size the illustrations close to the desired dimensions of the printed version.
- Submit each illustration as a separate file.

A detailed guide on electronic artwork is available on our website:

<http://www.elsevier.com/artworkinstructions>

You are urged to visit this site; some excerpts from the detailed information are given here.

Formats

If your electronic artwork is created in a Microsoft Office application (Word, PowerPoint, Excel) then please supply 'as is' in the native document format.

Regardless of the application used other than Microsoft Office, when your electronic artwork is finalized, please 'Save as' or convert the images to one of the following formats (note the resolution requirements for line drawings, halftones, and line/halftone combinations given below):

EPS (or PDF): Vector drawings, embed all used fonts.

TIFF (or JPEG): Color or grayscale photographs (halftones), keep to a minimum of 300 dpi.

TIFF (or JPEG): Bitmapped (pure black & white pixels) line drawings, keep to a minimum of 1000 dpi.

TIFF (or JPEG): Combinations bitmapped line/half-tone (color or grayscale), keep to a minimum of 500 dpi.

Please do not:

- Supply files that are optimized for screen use (e.g., GIF, BMP, PICT, WPG); these typically have a low number of pixels and limited set of colors;
- Supply files that are too low in resolution;
- Submit graphics that are disproportionately large for the content.

Cover art: Illustrations to be considered for the cover should be related to the authors' submitted article and be representative of their data, but need not necessarily be as they appear in the manuscript. Cover art should be formatted to occupy an area of 18X21 cm and should be submitted in digital format (TIFF, Photoshop, JPEG or Powerpoint) with a resolution of at least 300 dpi. Please also include a descriptive text with your cover art submission. The files should be uploaded to a specified FTP site - please contact the Editorial Office at bres@elsevier.com for instructions. For authors who wish to postal mail a CD with the cover art, please send it to:

Brain Research Editorial Office, Elsevier, 525 B Street, Suite 1800, San Diego, CA 92101-4495, USA. Please ensure that the manuscript reference number is included on all materials.

Color artwork

Please make sure that artwork files are in an acceptable format (TIFF (or JPEG), EPS (or PDF) or MS Office files) and with the correct resolution. If, together with your accepted article, you submit usable color figures then Elsevier will ensure, at no additional charge, that these figures will appear in color online (e.g., ScienceDirect and other sites) in addition to color reproduction in print. For further information on the preparation of electronic artwork, please see <http://www.elsevier.com/artworkinstructions>.

Figure captions

Ensure that each illustration has a caption. Supply captions separately, not attached to the figure. A caption should comprise a brief title (**not** on the figure itself) and a description of the illustration. Keep text in the illustrations themselves to a minimum but explain all symbols and abbreviations used.

Tables

Please submit tables as editable text and not as images. Tables can be placed either next to the relevant text in the article, or on separate page(s) at the end. Number tables consecutively in accordance with their appearance in the text and place any table notes below the table body. Be sparing in the use of tables and ensure that the data presented in them do not duplicate results described elsewhere in the article. Please avoid using vertical rules.

References

Citation in text

Please ensure that every reference cited in the text is also present in the reference list (and vice versa). Any references cited in the abstract must be given in full. Unpublished results and personal communications are not recommended in the reference list, but may be mentioned in the text. If these references are included in the reference list they should follow the standard reference style of the journal and should include a substitution of the publication date with either 'Unpublished results' or 'Personal communication'. Citation of a reference as 'in press' implies that the item has been accepted for publication.

Reference links

Increased discoverability of research and high quality peer review are ensured by online links to the sources cited. In order to allow us to create links to abstracting and indexing services, such as Scopus, CrossRef and PubMed, please ensure that data provided in the references are correct. Please note that incorrect surnames, journal/book titles, publication year and pagination may prevent link creation. When copying references, please be careful as they may already contain errors. Use of the DOI is encouraged.

Web references

As a minimum, the full URL should be given and the date when the reference was last accessed. Any further information, if known (DOI, author names, dates, reference to a source publication, etc.), should also be given. Web references can be listed separately (e.g., after the reference list) under a different heading if desired, or can be included in the reference list.

References in a special issue

Please ensure that the words 'this issue' are added to any references in the list (and any citations in the text) to other articles in the same Special Issue.

Reference formatting

There are no strict requirements on reference formatting at submission. References can be in any style or format as long as the style is consistent. Where applicable, author(s) name(s), journal title/book title, chapter title/article title, year of publication, volume number/book chapter and the pagination must be present. Use of DOI is highly encouraged. The reference style used by the journal will be applied to the accepted article by Elsevier at the proof stage. Note that missing data will be highlighted at proof stage for the author to correct. If you do wish to format the references yourself they should be arranged according to the following examples:

Reference style

Text: All citations in the text should refer to:

1. *Single author:* the author's name (without initials, unless there is ambiguity) and the year of publication;
2. *Two authors:* both authors' names and the year of publication;
3. *Three or more authors:* first author's name followed by 'et al.' and the year of publication.

Citations may be made directly (or parenthetically). Groups of references should be listed first alphabetically, then chronologically.

Examples: 'as demonstrated (Allan, 2000a, 2000b, 1999; Allan and Jones, 1999). Kramer et al. (2010) have recently shown'

List: References should be arranged first alphabetically and then further sorted chronologically if necessary. More than one reference from the same author(s) in the same year must be identified by the letters 'a', 'b', 'c', etc., placed after the year of publication.

Examples:

Reference to a journal publication:

Van der Geer, J., Hanraads, J.A.J., Lupton, R.A., 2010. The art of writing a scientific article. *J. Sci. Commun.* 163, 51–59.

Reference to a book:

Strunk Jr, W., White, E.B., 2000. *The Elements of Style*, fourth ed. Longman, New York.

Reference to a chapter in an edited book:

Mettam, G.R., Adams, L.B., 2009. How to prepare an electronic version of your article, in: Jones, B.S., Smith, R.Z. (Eds.), *Introduction to the Electronic Age*. E-Publishing Inc., New York, pp. 281–304.

Journal abbreviations source

Journal names should be abbreviated according to the List of Title Word Abbreviations: <http://www.issn.org/services/online-services/access-to-the-ltwa/>.

Video data

Elsevier accepts video material and animation sequences to support and enhance your scientific research. Authors who have video or animation files that they wish to submit with their article are strongly encouraged to include links to these within the body of the article. This can be done in the same way as a figure or table by referring to the video or animation content and noting in the body text where it should be placed. All submitted files should be properly labeled so that they directly relate to the video file's content. In order to ensure that your video or animation material is directly usable, please provide the files in one of our recommended file formats with a preferred maximum size of 50 MB. Video and animation files supplied will be published online in the electronic version of your article in Elsevier Web products, including ScienceDirect: <http://www.sciencedirect.com>. Please supply 'stills' with your files: you can choose any frame from the video or animation or make a separate image. These will be used instead of standard icons and will personalize the link to your video data. For more detailed instructions please visit our video instruction pages at <http://www.elsevier.com/artworkinstructions>. Note: since video and animation cannot be embedded in the print version of the journal, please provide text for both the electronic and the print version for the portions of the article that refer to this content.

AudioSlides

The journal encourages authors to create an AudioSlides presentation with their published article. AudioSlides are brief, webinar-style presentations that are shown next to the online article on ScienceDirect. This gives authors the opportunity to summarize their research in their own words and to help readers understand what the paper is about. More information and examples are available at <http://www.elsevier.com/audioslides>. Authors of this journal will automatically receive an invitation e-mail to create an AudioSlides presentation after acceptance of their paper.

Supplementary data

Elsevier accepts electronic supplementary material to support and enhance your scientific research. Supplementary files offer the author additional possibilities to publish supporting applications, high-resolution images, background datasets, sound clips and more. Supplementary files supplied will be published online alongside the electronic version of your article in Elsevier Web products, including ScienceDirect: <http://www.sciencedirect.com>. In order to ensure that your submitted material is directly usable, please provide the data in one of our recommended file formats. Authors should submit the material in electronic format together with the article and supply a concise and descriptive caption for each file. For more detailed instructions please visit our artwork instruction pages at <http://www.elsevier.com/artworkinstructions>.

3D neuroimaging

You can enrich your online articles by providing 3D neuroimaging data in NIFTI format. This will be visualized for readers using the interactive viewer embedded within your article, and will enable them to: browse through available neuroimaging datasets; zoom, rotate and pan the 3D brain reconstruction; cut through the volume; change opacity and color mapping; switch between 3D and 2D projected views; and download the data. The viewer supports both single (.nii) and dual (.hdr and .img) NIFTI file formats. Recommended size of a single uncompressed dataset is 100 MB or less. Multiple datasets can be submitted. Each dataset will have to be zipped and uploaded to the online submission system via the '3D neuroimaging data' submission category. Please provide a short informative description for each dataset by filling in the 'Description' field when uploading a dataset. Note: all datasets will be available for downloading from the online article on ScienceDirect. If you have concerns about your data being downloadable, please provide a video instead. For more information see: <http://www.elsevier.com/3DNeuroimaging>.

Submission checklist

The following list will be useful during the final checking of an article prior to sending it to the journal for review. Please consult this Guide for Authors for further details of any item.

Ensure that the following items are present:

One author has been designated as the corresponding author with contact details:

- E-mail address
- Full postal address
- Phone numbers

All necessary files have been uploaded, and contain:

- Keywords
- All figure captions
- All tables (including title, description, footnotes)

Further considerations

- Manuscript has been 'spell-checked' and 'grammar-checked'
- References are in the correct format for this journal
- All references mentioned in the Reference list are cited in the text, and vice versa
- Permission has been obtained for use of copyrighted material from other sources (including the Internet)

Printed version of figures (if applicable) in color or black-and-white

- Indicate clearly whether or not color or black-and-white in print is required.
- For reproduction in black-and-white, please supply black-and-white versions of the figures for printing purposes.

For any further information please visit our customer support site at <http://support.elsevier.com>.

AFTER ACCEPTANCE

Use of the Digital Object Identifier

The Digital Object Identifier (DOI) may be used to cite and link to electronic documents. The DOI consists of a unique alpha-numeric character string which is assigned to a document by the publisher upon the initial electronic publication. The assigned DOI never changes. Therefore, it is an ideal medium for citing a document, particularly 'Articles in press' because they have not yet received their full bibliographic information. Example of a correctly given DOI (in URL format; here an article in the journal *Physics Letters B*):

<http://dx.doi.org/10.1016/j.physletb.2010.09.059>

When you use a DOI to create links to documents on the web, the DOIs are guaranteed never to change.

Online proof correction

Corresponding authors will receive an e-mail with a link to our online proofing system, allowing annotation and correction of proofs online. The environment is similar to MS Word: in addition to editing text, you can also comment on figures/tables and answer questions from the Copy Editor. Web-based proofing provides a faster and less error-prone process by allowing you to directly type your corrections, eliminating the potential introduction of errors.

If preferred, you can still choose to annotate and upload your edits on the PDF version. All instructions for proofing will be given in the e-mail we send to authors, including alternative methods to the online version and PDF.

We will do everything possible to get your article published quickly and accurately. Please use this proof only for checking the typesetting, editing, completeness and correctness of the text, tables and figures. Significant changes to the article as accepted for publication will only be considered at this stage with permission from the Editor. It is important to ensure that all corrections are sent back to us in one communication. Please check carefully before replying, as inclusion of any subsequent corrections cannot be guaranteed. Proofreading is solely your responsibility.

Offprints

The corresponding author, at no cost, will be provided with a personalized link providing 50 days free access to the final published version of the article on [ScienceDirect](http://www.sciencedirect.com). This link can also be used for sharing via email and social networks. For an extra charge, paper offprints can be ordered via the offprint order form which is sent once the article is accepted for publication. Both corresponding and co-authors may order offprints at any time via Elsevier's WebShop (<http://webshop.elsevier.com/myarticleservices/offprints>). Authors requiring printed copies of multiple articles may use Elsevier WebShop's 'Create Your Own Book' service to collate multiple articles within a single cover (<http://webshop.elsevier.com/myarticleservices/booklets>).

AUTHOR INQUIRIES

You can track your submitted article at http://help.elsevier.com/app/answers/detail/a_id/89/p/8045/. You can track your accepted article at <http://www.elsevier.com/trackarticle>. You are also welcome to contact Customer Support via <http://support.elsevier.com>.

© Copyright 2014 Elsevier | <http://www.elsevier.com>