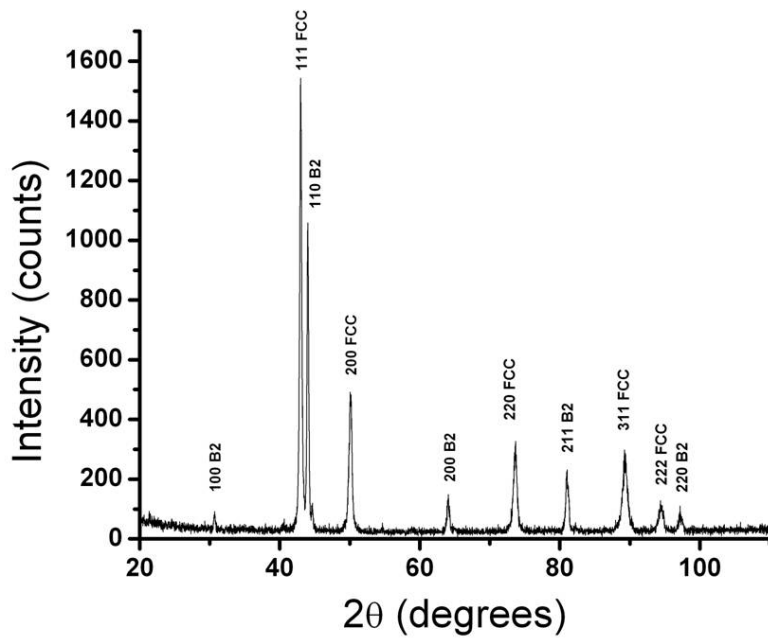
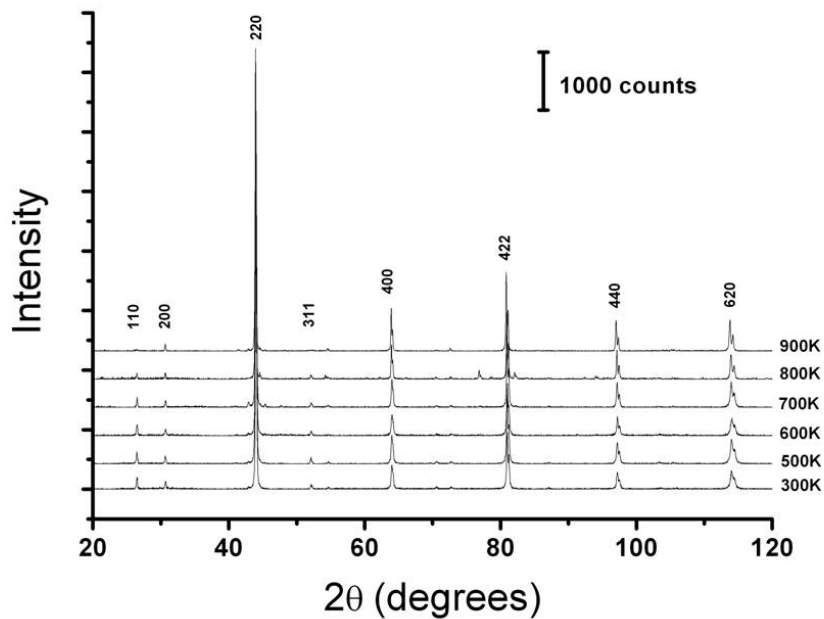


All electron diffraction patterns should be uniquely indexed, as shown above.



All graphs should show actual experiment counts and not use arbitrary unit or A.U., as shown in the X-ray diffraction pattern above. For X-ray patterns, all peaks should be indexed and if multiple phases are present, the phases should be identified.



If multiple offset curves are shown on the same plot, instead of adding a scale to the vertical axis, a scale bar should be used to indicate the counts, see above.